

TO SEARCH, CLICK "EDIT,"
THEN "ADVANCED SEARCH"
ENTER NAME IN SEARCH BOX

the

S

P

I

R

I

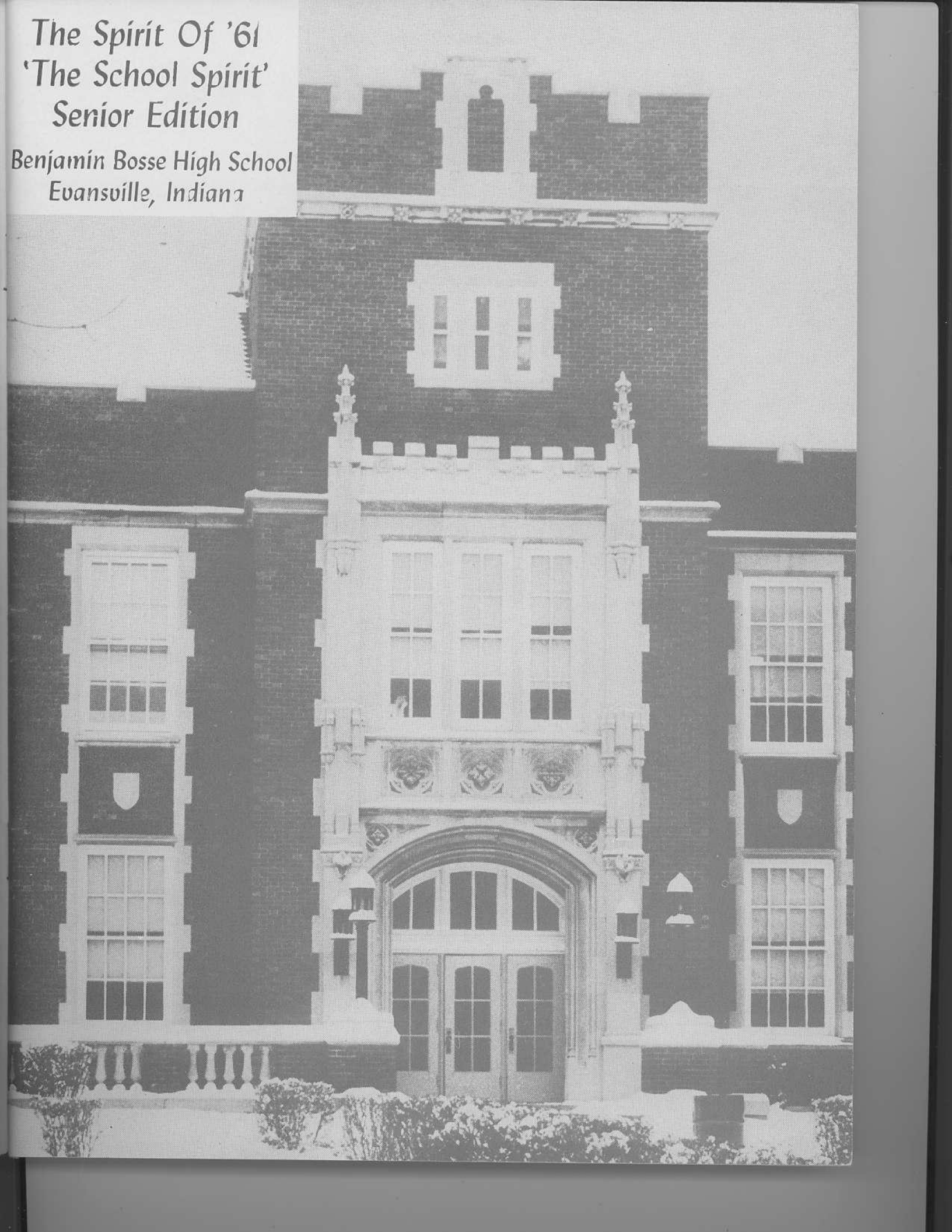
T

of

'61

The Spirit Of '61
'The School Spirit'
Senior Edition

Benjamin Bosse High School
Evansville, Indiana



Hail!

Hail!



ACTIVITIES

Page 2

SPORTS

Page 26

OUR GANG'S ALL HERE



OUR GANG. A simple title and yet what other words could describe so well the relationship we shared during four years at Bosse.

Thrown together in our freshman year with people of different backgrounds and interests, from different schools and different places, we have all grown to have one primary interest — Bosse. We have learned to work together and work together well as shown by our many activities.

During our freshman year the newness of Bosse and the added difficulties of strange and new studies left us with little time for much extra curricular fun. With some of the newness worn off we began to realize that studies were only a part of our life. The "Beatnik Ball" our sophomore party, became our first "organized" venture. When we became upperclassmen we received added responsibilities and more privileges. Highlights of the year were our junior prom, "Fontaine de Fleurs" and our junior talent day, "Around the World."

We finally attained the status of Seniors, the crowning point of four years work had arrived. The year was filled with memorable events: in the fall, our senior prom, "Misty;" in the spring, our senior talent day, "Accent On Youth;" and in early summer, the long awaited commencement festivities.

Throughout the years, many things retained their outstanding quality. The marching band was always a thrill to watch. Their superb exhibitions at the football games were always a welcome treat. Our dramatic productions have thrilled and delighted audiences throughout our four years. The superb acting, directing, lighting and stage sets have made Bosse renowned for excellent entertainment. Inspiring Christmas and Easter productions highlighted our holidays. To Bosse students they have come to be as much a part of the holidays as the Christmas spirit and Easter church services.

We have truly been busy during our four years, but as a busy mind is a happy mind, so also, has Our Gang been a happy one.

ALBUM

Page 40

ADS

Page 67

Intellects . . . Travelers . . . Socialites . . . Athletes . . .



Mary Hamilton, this year's School Spirit Spelling Bee winner, is shown at the library dictionary preparing for the victory she won in the annual spell-down. Runners up were James Marver, second; and Jim Forman, third.



Recalling some of the many events of our past four years are the Class Day speakers. Seated are Lee Ortmeier, who discussed our social activities, and Marsha Gauntt whose subject was the Fine Arts. Standing are John Stevens and Jim Wiesman. They spoke on Scholarship and Athletics, respectively.

Found searching for additional speech material in the library are this year's Commencement speakers. Left to right are Steve Edmonson, Maryelaine Miller, Joanne Hufnagel and Sidney Kushner.



E a c

Preparing
right Ba



Enjoyin
Sandy
Neiderm

Each Helped Make Our Gang A Well-Rounded One

Preparing to leave for the Fall Eastern Tour are from left to right Barbara Knote, Martha Duncan, Sandra Bently, Joyce

McCulley, Carolyn McCullough, Pam Medicott and tour captain, Nina Witherspoon.



ONE REASON for a high school education is more important than all others — the development of intellectual young adults.

No matter what a student does in later life — college, the business world, other jobs, marriage — the foundation of that future life is laid in high school. The forming of patterns of life, basic beliefs, the making of lifetime friends — these are but a few of the things formed in high school that make up the composite person.

Scholarship is definitely one of the prime objectives in this over-all plan. As evidenced by the high scholastic ratings of the class and the great number of Bosse winners in all kinds of academic contests, we have been well-taught in those things pertaining to the broadening of our minds.

"Well-rounded" is often the word attached to an individual. However, "well-rounded" must be associated with us before we are truly individuals. This term means going beyond the normal training into a wider range of development. This includes the development of personality and the satisfaction of serving the school by participating in clubs, in productions and in class organizations. The holding of offices and the close association with counselors and advisers enriches our lives.

Travel has always been acknowledged as a great teacher. We are among the fortunate few who have this privilege of learning through sight and experience. Under the capable direction of Mrs. Margaret Mann, two tours, one in the fall and one in the spring, leave Bosse annually for points east. Included in the grand tour is, our national capitol and the most fascinating city in the world, New York. Anyone who has ever been on the tour can say they learned much from the experience.

Finally, our social life plays a dominant part of our lives. Learning to get along with people is a talent which is used forever and at all times. After four years of cultivating this experience through the aid of teachers and friends, we can truly say upon graduation that we are well-rounded individuals.



Enjoying the Commencement Dance are, from left to right, Sandy Stinson, Bob Seybold, Carolyn Schmidt and Tom Neidermeir.



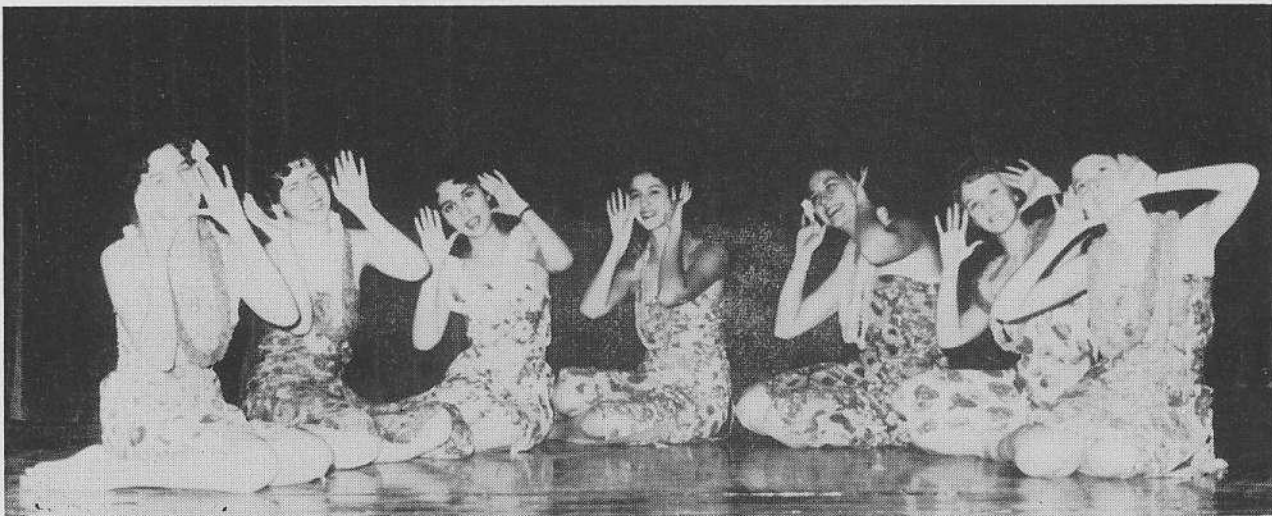
Unusual Talents 'Unearthed' Among Our Classmates

PREPARING FOR our junior and senior talent days took time, patience, hard work and the excellent backing of our class sponsors. Over and over we rehearsed our acts, anxiously waiting for the appointed time to perform them before an audience.

Junior talent day, "A World Tour," was presented in the afternoons of November 19 and 20, 1959, for the student body. Pictured in their Hawaiian act, "Happy Talk," are from l. to r., Judy Palmer, Maryelaine Miller, Roz Fine,

Becky Shuel, Linda Branaman and Barbara Hartley.

Senior talent day, "Accent on Youth," was presented in the afternoons of March 8 and 9, 1961, for the student body and at 8 p.m., March 9, for the public. Pictured above in their act, "Sisters," are from l. to r., Steve Edmonson, Jim Wiesman, Ed Coleman and Larry Denton. Senior talent day was a huge success. Our efforts proved they were not in vain when we were rewarded with applause at the final curtain.



Linda
king of
bers of
Edmon
and Gi
ton and

"Clean
from le



Linda Branaman and Stan Wilson reigned as queen and king of the Junior Prom, "Fontaine de Fleurs." Other members of the royal court were Maryelaine Miller and Steve Edmonson, Judy Miller and Larry Newman, Judy Craig and Gilbert Pierce, Diana Bauer and Ed Brown, Carol Huston and Larry Wilke and Joy Hankins and Rick Mills.

Pictured among the regal splendor befitting a king and queen are the royal couple of our Senior Prom, "Misty." Larry Siesky and Jache Wilhite ruled over the gala events of the evening.

Proms Provide Lovely Memories Of Gala Evening



"Cleaning up" after the Senior Prom, "Misty," are, standing from left to right, Ed Brown, Diane Strouse and Bill Dixon.

Seated from left to right are Jill Gilmore, Ann Clippinger, Larry Denton, Betsy Willison, Judy Miller and Nick Miller.

Entertainment, Inspiration Filled The Auditorium



Lee Ortmeyer and Deane Miller in the roles of Agnes and the Little Queen, respectively, perform in the 1960 Thespian production of "The Lark."

Busily putting the finishing touches on the annual Christmas production are the present Thespian officers. From left to right are Roz Fine, secretary; Larry Burton, vice-president; Jerry Suhrheinrich, president; Mike Cannon, treasurer; and Deane Miller, clerk.



SUPERB ENTERTAINMENT and inspiring productions are well known at Bosse by everyone.

This well-known fact is due largely to the efforts and cooperation of the music and drama departments who lavishly put together productions that could not be surpassed anywhere. The sets are always perfect, beautiful and intricately designed. Actors and soloists are rehearsed until the peak of perfection is reached. If needed, beautiful music is provided by either the choir, the band or the orchestra to help set the mood.

Much of the credit for this perfection goes to the Thespians who work feverishly at times and for many, many hours before any production is ready for the opening curtain. The greatest contribution is made by the self-sacrificing sponsors. Many are the hours they devote to organizing, rehearsing, lending a hand and especially keeping everything going at a high pitch. Not to be forgotten is the wonderful co-operation shown by all the faculty and administration in aiding, in whatever way, all productions.

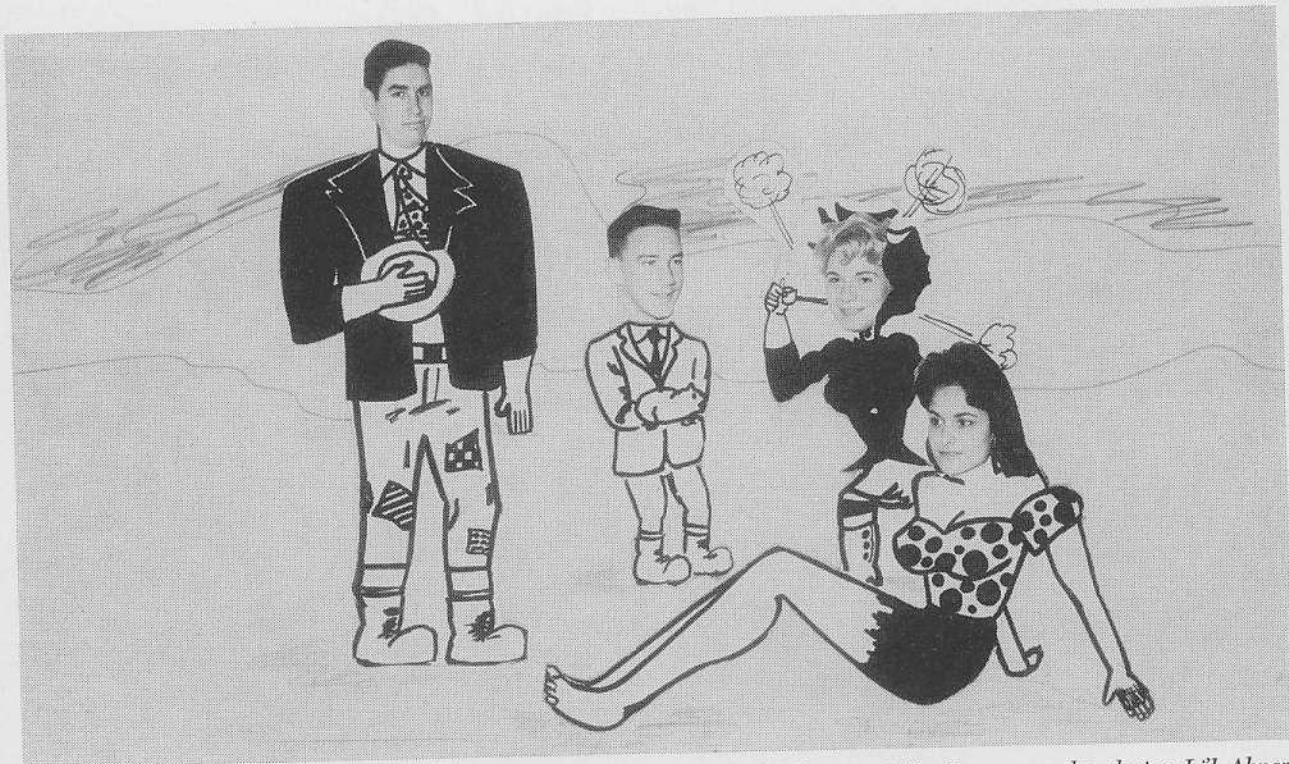
Results? There are many. The Christmas and Easter productions are more beautiful than ever. Music Nite has taken on even more meaning. More difficult dramas are presented in the fall with "The Lark" and "The Diary of Anne Frank" being two of the most recent examples. Such musicals as "Oklahoma," "Plain and Fancy" and "Li'l Abner" have brightened many springs. Results? Superb entertainment and inspiring productions at Bosse.



Three angels who were caught relaxing on a silvery cloud in the Christmas production are pictured above. Joanne Hufnagel relates a story to the younger angels. Christine Koch and Shannon McKasson listen intently.

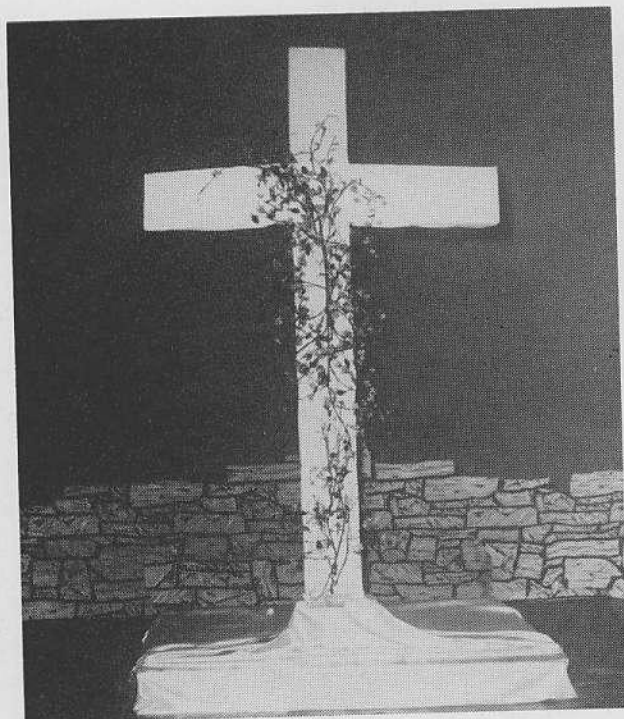
This y
musica
Picture

As the
chang
cross



This year's spring spectacular in the form of the lilting musical, "Li'l Abner," amused and delighted all who saw it. Pictured above are the principal figures in this famous

musical. They are Mike Cannon as the elusive Li'l Abner, Pat Ryan as Pappy Yokum, Lee Ortmeyer as Mamma Yokum and Sandi Stinson as the provocative Daisy Mae.



As the focal point of the traditional Easter production, a changing succession of colored spotlights dramatized the cross as the Easter story was read.



Shown putting up scenery for one of this year's outstanding productions, Senior Talent Day, are, left to right, Lee Ortmeyer, Vernon Mann, Dennis Biggs, Tom Niedermeier, Marsha Gauntt, Vicki Foster and Neil Bergman.



Working busily throughout the semester publishing THE SCHOOL SPIRIT every week are the members of the first semester editorial staff. Top row left to right are Shirly Sample, Marilyn McCutchan, Martha Duncan, Marv Freson, Pam Pride, Steve Trotter, Mike Wagner, Bob Thiel, Linda

Deer, Rick McRoy, Steve Tipton and Kip Hulvershorn. Included in the bottom row left to right are Vicki Jacquess, Barbara Woodring, Phyllis Lowery, Nina Witherspoon, Marc Hallert, Tom Thornton, Pat Watts, Ann Harris and Mary Poe.

All The News That Is Fit To Print . . .



Shown taking a break from their various duties which keep the business side of THE SCHOOL SPIRIT in the black, are the industrious members of the business staff. Top row l. to r. are Nick Miller, Nancy Carter, Lana Stone, Joy Hankins, Agnes Marsch, Bob Parker. Carmen Woods, Steve

Hubele, David Jean, Allen McGuinness, Phil Barnett, Jane Voight, Sandra Nelson, Donna Wolf and Carol Huston. Seated at the table are l. to r., Brenda Oxley, Walter Wini-ger, Steve Martin, Charlotte Tichenor, Gloria Zgorski, Janet Boehne, Betty Banko and Brenda Jones.



MANY JOURNALISTS composed the large staff of **THE SCHOOL SPIRIT** during the year. Pictured to the left, typing and copyreading the weekly paper, are the paper's editors, whose job it is to see that the paper goes out every week on schedule. From l. to r. are the first semester editors, Nick Freeman, managing editor; Sandy Barnett, news editor; and Doug Melvin, editor-in-chief. Next are the second semester editors, Sandy Brock, Rox Fine and Linda Branan who are editor-in-chief, news editor and managing editor, respectively. It is the editor-in-chief's job to generally supervise the make-up of the paper while the managing editor makes sure the paper gets printed each week. The news editor is in charge of gathering the news and distributing it to the various pages.

TAKING TIME out from publishing the paper every week are the all important cubs. Pictured at right are the second semester cubs. Front row from l. to r. are Joan Carson, Linda Jordan, Debbie Whitney, Tom Dunning, Jane Winkler, Karen Stoffeth and Warren Rosenblatt. Standing from l. to r. in the back row are Dorothy Goffinet, Carolin Nash, Jackie Grimmer, Jim Owen, Bob Kerney, David Thomas and Steve O'Neil. It is the cub's job to run newsbeat, gather news and write the stories for the paper every week. During the semester the cubs have a chance to gain experience by holding the top positions on **THE SCHOOL SPIRIT** for one issue. Editors of the cub edition second semester were Steve O'Neil, editor-in-chief; Jim Owens, news editor; and Carolin Nash, managing editor.



PICTURED AT LEFT are Judy Palmer and Steve Schnake, co-editors of the senior edition, "The Spirit of '61." Beginning in the fall, these hard-working editors grouped together the most memorable events of the year to be preserved in the senior edition. Their job also included drawing the lay-outs of the yearbook, overseeing the taking of pictures and supervising the editors of the various sections. Editing the opening section of the senior edition were Nck Freeman, Barbara Woodring and Kip Hulvershorn. Pam Pride, Phyllis Lowery and Pat Watts were co-editors of the activities section. Marv Freson and Marc Hallert were in charge of the sports section and Nina Witherspoon and Martha Duncan edited the album section. Pat Watts and Martha Duncan were in charge of the circulation campaign while Carolyn Schmitt served as photographer.

Preparing the make-up for **THE SCHOOL SPIRIT** are from left to right, Ralph Robertson, Mike Boardman, Mike Euler, Jim Bolerjack and Jerry Ritter. It is the job of these boys of the print shop staff to set type for headlines and ads. They also make up the page according to the editor's specifications. They are under the supervision of Gerald Reffett, print shop instructor. Other members of the staff are John Ball, Dennis Rutherford, Ted Gish, Jerry Wood, Don Bracher and Bill Benningfield. Also on the crew are Eddie Brown, Sanford Bush, Ronnie Wall, John Hoover, Junior Riggle, Harold Martin, Larry Hodge, Mike Kelly, Jack McMahon, Lester Steinmetz, Jimmie Gish, Archie Cabell, James Potter and John Von Behren.



National Honor Society Commends Scholastic Leaders



Discussing plans for the induction of new members into National Honor Society are members who joined in their junior year. In the first row are Vicki Foster, Marsha Gauntt and Steve Edmonson. Malcolm Koch, Phyllis Lowery, Mary-

elaine Miller, Joanne Hufnagel and Marv Freson comprise the second row; while Sid Kushner, Jim Wiesman, Ed Coleman and John Stevens form the third row. Missing from the picture is Meredith Black, a January graduate.



National Honor Society officers, Jim Wiesman, president; Ed Coleman, vice president; Maryelaine Miller, secretary; and Steve Edmonson, treasurer, inspect the silver service to be used in the reception following the induction of new members.

SCHOLARSHIP, LEADERSHIP, character and service are the distinguishing qualities of the National Honor Society. To be eligible for membership in the Society, seniors must rank in the upper third of their graduating class, and juniors must rank in the upper fourth of their class. Applicants are required to fill out information blanks, which are distributed among faculty members for appraisal.

Jim Wiesman, president of NHS, presided over the induction ceremony Monday, April 17. Speakers for the assembly were Malcolm Koch, character; Phyllis Lowery, service; Vicki Foster, leadership; John Stevens, scholarship; and Ed Coleman, the emblem. Following the induction was a reception for new members in the Community Room.

New senior inductees were Sandy Barnett, Linda Branan, Sandra Brock, Barbara Brown, Larry Burton, Betty Clayman, Sondra Craddock, Linda Deer, Julia Deffendahl, John Gaisser, Robert Cowdy and Mary Hamilton. Other new members include Barbara Hartley, Jerilyn Hess, Linda Hopper, Mike Judd, Bob Keil, Linda Leber, Lee Ortmeier, Peggy Parkhurst, Joan Postlethweight, Ann Pritchard, Pam Pride and Lois Rosenblum. Completing the list of senior members are Carolyn Schmitt, Steve Schnacke, Diane Strouse, Jerryl Vaughan, Pat Watts, Jache Willhite, Larry Wilke, Stan Wilson, Lino Wiseman, Nina Witherspoon and Donna Wolf.

Junior inductees were Carol Bloy, Sylvia Deusner, Barbara Edmonson, Nancy Hetzel, Robert Hetzel, Charles Kleymeyer, Bill Luerssen and Marilyn McCutchan. Russel Morrison, Steve O'Neil, Diane Rosencranz, Mardee Royer, Tom Wilhelmus and John Wilson conclude the group of inductees.

Student Council Provides Year Of Service, Projects



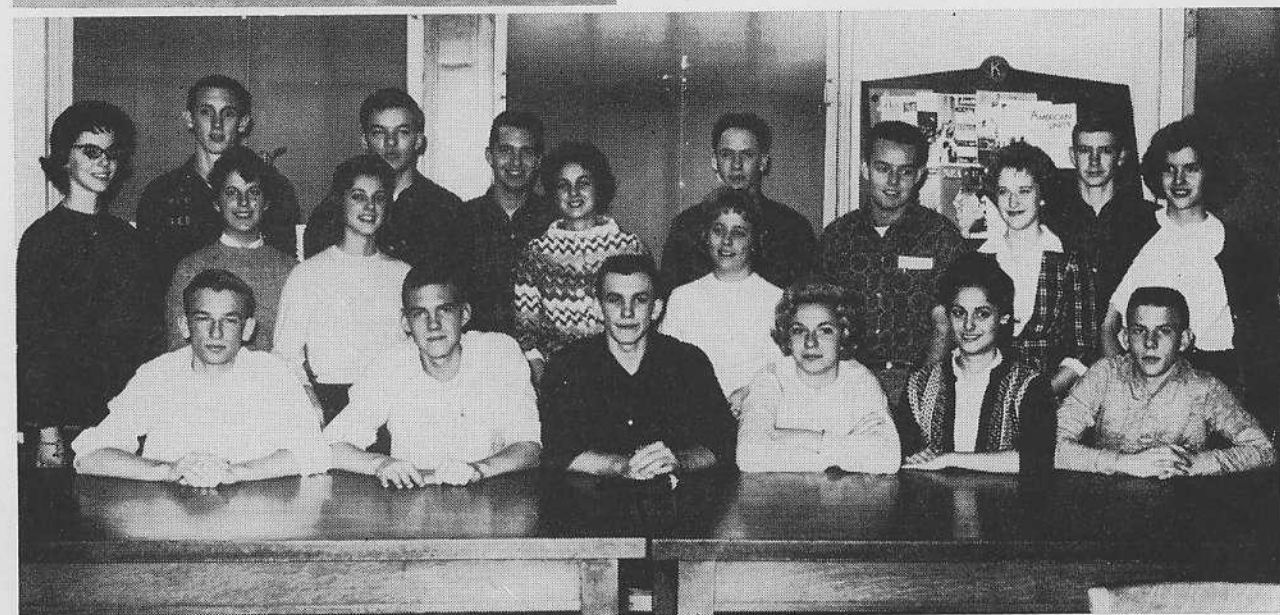
JIM WIESMAN LED the Student Council through a successful year of legislation and debates by acting as president. Assisting him was John Wilson as vice president. Lee Ortmeier, secretary, kept the minutes and handled correspondence, while Sandi Stinson, treasurer, balanced the Council's funds.

Most legislative suggestions were previewed in the bi-monthly Steering Committee meetings. The Class Council officers representing their respective groups were Larry Wilke, Steve Edmonson and Jache Wilhite, seniors; J. Logsdon, Brenda Jones and Barbara Brightmire, juniors; Carol Stock, Dan Hewins and Janice Yost, sophomores; and Bob Becker, Don Lloyd, Dan Hewins, freshmen.

Through its committees Student Council accomplished such projects as an assembly for freshmen to acquaint them with Student Council proceedings, the annual safety assembly, sale of Student Telephone Directories, freshman handbooks, Christmas decorations, "Toys for Tots," campaign and the Kick-Off Kaper. A monitoring committee was also established to keep the cafeteria in order.

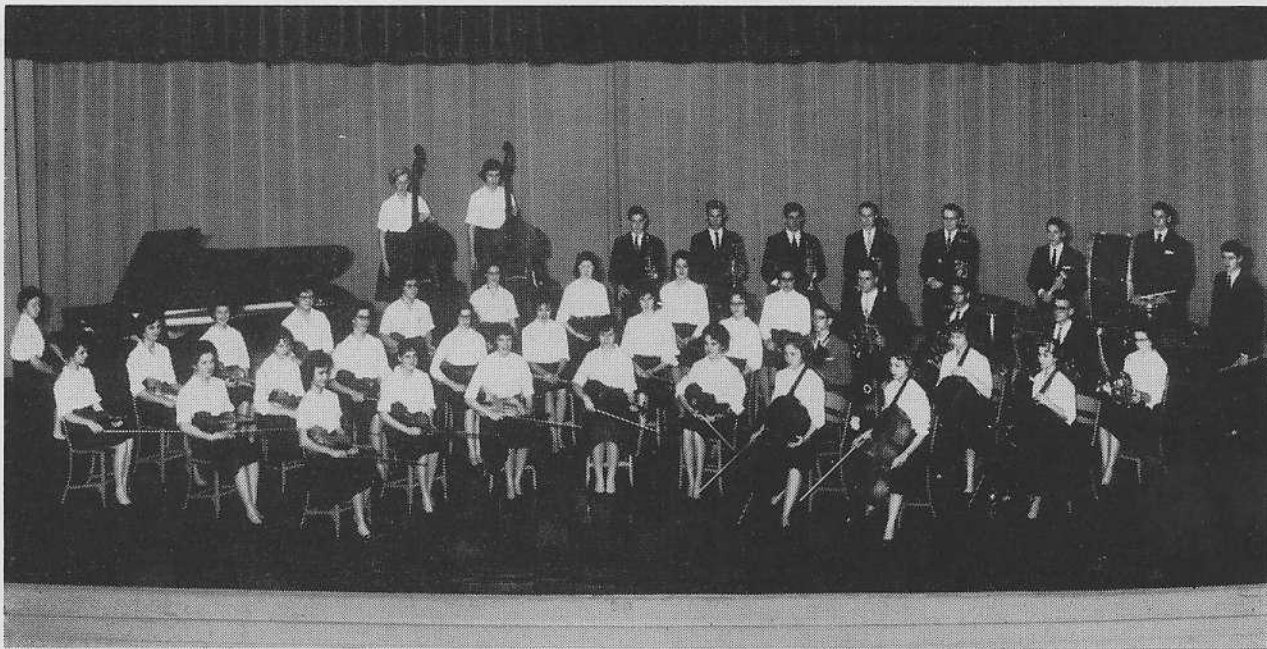


Setting the musical pace for the Kick-off Kaper after the Mater Dei game, Oct. 28, is the dance band. The dance is an annual event sponsored by the Student Council.



Gathered for progress reports are the various Student Council committee chairmen and officers. In the first row from l. to r. are Malcolm Koch, John Wilson, vice president; Jim Wiesman, president; Lee Ortmeier, secretary; Sandi Stinson,

treasurer; Chuck Brashears. Second row: Diane Rosencranz, Carol Bloy, Carol Huston, Nina Witherspoon, Vicki Jacquess, Mike Judd, Barbara Edmonson, Carolin Nash. Third row: Stan Wilson, Tom Wilhelmus, Russ Morrison, Chuck Kley-meyer, John Gaisser.



Pictured in their traditional black and white attire is the 1960-61 Concert orchestra. In the first row from l. to r. are D. Barton, P. Medlicott, D. Brill, J. Jardine, L. Hopper, V. Ryan, J. Wilhite. Second row: T. Winchell, V. Hopper, B. Long, C. Epley, C. Perkins, L. Hoyt, C. Porter, S. Fishman, V. Meyer, G. Kirby. Third row: J. Huffman,

J. Grimmer, M. Hope, M. Wessel, C. Schmidt, L. Miles, N. Blake, S. Craddock, J. Mayfield, D. Keenen, G. Harmon, E. Letsinger, M. Caskey. Fourth row: P. Wallace, L. Peters, M. Wilson, D. Skelton, G. Meyer, J. Alsop, C. Madden, J. Hensley, P. Black, N. Jones, C. Oldham.

Choral, Instrumental Productions Offer Entertainment



Discussing plans for the annual Copaca-Band-A are the officers of the band and orchestra. Seated are Charles Madden, drum major; Pam Medlicott, secretary-treasurer of the orchestra; DuWayne Keenen, first lieutenant of the band; Jim Alsop, captain of the band; and Linda Hopper, vice president of the orchestra. Standing is Jache Wilhite, president of the orchestra.

MUSIC MAINTAINED ITS predominant position in our activities through the performances of the band, orchestra and Concert choir. The marching band added spirit to our athletic events by performing at football games and pep assemblies. The reward for their talent and practice was the honor of receiving the "First Chair of America" award again this year. They were also invited to present a concert for the National Security Seminar at Evansville College.

Orchestra members won several first places in state competition at Indianapolis this year. The orchestra was later invited to present a concert at Tilghman High School in Paducah, Kentucky. Highlighting the spring season was a combined production by the instrumental, choral and dramatic departments in which all musical numbers were dramatized. Director of the band and orchestra is Larry Johnston.

Under the direction of Richard Hyatt, the Concert Choir harmoniously blended their voices in a rendition of traditional and modern Christmas and Easter music in the annual assemblies. "Lil' Abner," an amusing and vivacious musical comedy, was presented as the spring operetta. It is based on the characters of Al Capp's famous comic strip. The officers of the Concert Choir were Mike Judd, president; Dennis Biggs, vice president; Vicki Foster, secretary; and Steve Hubele, treasurer.

Concer
Brock,
Hubele
Gauntt
A. Leu
Biggs,

Member
tion of
S. Gum
J. Yost,
A. Sche
N. Hetz
row: M
Hilling,



Concert Choir members in the first row from l. to r. are S. Brock, L. Rosenblum, C. Sanders, A. Jones, R. Gowdy, S. Hubele, R. Hall, M. Judd, J. Wilhite, C. Clippinger, M. Gauntt. Second row: C. Townsend, S. Barnett, A. Clippinger, A. Lewis, S. Georgesen, E. Letsinger, J. Suhrheinrich, D. Biggs, S. Stinson, B. Willison. Third row: B. Knote, M. Dun-

can, V. Foster, W. Eakins, R. Sonnemaker, M. Oliver, D. Legeman, M. Cannon, D. Rosencranz, C. Woods, M. Miller. Fourth row: L. Ortmeyer, C. Nash, M. Rothert, J. Liggett, R. Mills, T. Wilhelmus, S. Sills, D. Keenan, G. Kornell, C. Buttrum, K. Kinkaid, M. Hergett, L. Burton, J. Gilmore, J. Hufnagel, J. Postlethweight, S. Huff.



Members of the 1960-61 Concert and Marching band under the direction of Larry Johnston are from l. to r. in the first row, C. Perkins, S. Gumm, A. Werling, D. Meckert, L. Hoyt, C. Porter, R. Dobroski, J. Yost, C. Letsinger, L. Northcutt, S. Elzer. Second row: J. Winkler, A. Schermack, E. Fickas, J. Duncan, J. Gray, S. Lamb, S. Craddock, N. Hetzel, J. Mayfield, L. Nussmeyer, S. Tredwell, K. Knapp. Third row: M. Ircin, K. Beesley, D. Lampton, M. Andrae, J. Overton, M. Hilling, J. Warren, J. Stephens, R. Archer, M. Epley, W. Gilbert, M.

Hamilton, L. Murphey. Fourth row: W. Meng, E. Letsinger, G. Madlinger, D. Skelton, T. Mominee, D. Merrell, G. Meyer, W. Henry, J. Alsop, J. Owen, W. Phillips, J. Mitchell, D. Keenen, R. Meinert. Fifth row: P. Burbage, B. Woodring, R. Kerney, L. Weber, T. Lester, W. Luerssen, R. Faul, J. Schriber, J. Gadau, C. Madden, D. Nelson, J. Hensley, J. Kimsey. Sixth row: C. Oldham, N. Jones, R. Richardson, D. Elliott, R. Herendeen, B. Russell, L. Wiseman, J. Holman, J. Copeland, P. Black.



Rehearsing their yells for the freshman tourney are cheerleaders Judy Robinson, Susan Kuebler, Julie Bicking, Susie Vaughn and Linda Lemke.



One of the big moments of freshman orientation week is the advent of new and somewhat stubborn lockers. Some study the situation carefully and proceed with determination, while others stand baffled or become hysterical.

Freshman Class Develops Leadership, Activities



Looking over the activities of concern to the freshman class are the officers, Tay Ruthenberg, vice president; Connie

Skidmore, president; Tim Bragassa, treasurer; and Judy Robinson, secretary.

Organiz
ton Jul
chairme

Sop

SOPHO
meaning
when th
ton Jul
chairme
Powell
suggest
out on
Schol
rated hi
fied for
ment T
gained
their fi
clubs, f
assembl
their fi
speech.



Organizing the committees for the sophomore party, "Cotton Jubilee," are Ken Rakow and Nina Lee Powell, co-chairmen of the event.



Discussing plans for the sophomore party are the class officers, Dan Hewins, vice president; Bob Sonemaker, president; Sue Davis, secretary; and Esta Herrmann, treasurer.

Sophomore Year Stresses Scholarship, Responsibility

SOPHOMORES BEGAN to know the meaning of responsibility and planning when they took on the project of "Cotton Jubilee," the sophomore party. Co-chairmen for this event were Nina Lee Powell and Ken Rakow. As the theme suggests, the decorations were carried out on a plantation idea.

Scholastically the sophomore class rated high as sixty-three students qualified for National Educational Development Test awards. Sophomores also gained several "firsts." They were given their first opportunity to join ECA clubs, their first chance to view pep assemblies with upperclassmen and their first try at preparing a final speech.

Caught in a moment of rare inactivity are the reserve cheerleaders, Annith Comstock, Janice Yost and Kendra Beesley.



Junior Class Sponsors Prom, Talent Day

Sen



Diane Rosencranz, secretary; Mardee Royer, vice president; Chuck Kleymeyer, president; and Barbara Edmonson, treasurer; look on their responsibilities to the junior class from a high vantage point.



Reigning over "Mood Indigo" were Gary Grieger and Barbara Brightmire. The prom took place at the Rural Youth Center on April 22.



JUNIORS CO-OPERATED through various committees and crews to make their first prom and talent day tremendous successes.

King and queen of the junior prom, "Mood Indigo," were Gary Grieger and Barbara Brightmire. Members of the royal court were John McIntosh and Carol Levy; Jim Wooton and Barbara Edmonson; Tim Baize and Barbara Turpin; John Wilson and Dorothy Goffinet; J. Logsdon and Barbara Luton; and Steve Tipton and Nancy Crouch. Decorations for the prom were carried out in an underwater theme. Co-chairmen of the event were Carol Bloy and Bob Hetzel.

"Roaring Twenties," the junior talent day, took place in a "speak-easy" setting. Members of the cast were adorned in raccoon coats and flapper dresses. Master of Ceremonies for the production was Rudy Ennis. Co-chairmen were Chuck Brashears and Barbara Edmonson.

Karen Stoffeth, Jane Winkler, Debbie Whitney, Joni Carson and Carolin Nash display their Charleston number in the "Roaring Twenties," the junior talent day, which was presented Nov. 16.

Senior
Clippi
Wilson

Senior Year . . . A Memorable Experience



LEADERS OF THE CLASS of '61 through its four years were the officers who are pictured at the left. From l. to r. in the first row are Vicki Foster, president; Marsha Gauntt, secretary; and Becky Shuel, treasurer, of the freshman class. Sophomore officers were Martha Duncan, president; Jerilyn Hess, vice president; Linda Hopper, secretary; and Maryelaine Miller, treasurer. Jim Wiesman, president; Joan Postlethweight, secretary; and Steve Edmonson, treasurer, were the officers of the junior class. Leading the class of '61 through its senior year were Ed Coleman, president; Linda Branaman, vice president; Sara Clippinger, secretary; and Stan Wilson, treasurer. Ed and Steve also served as vice presidents of the junior and freshman classes, respectively.

Climaxing our high school memories was our participation in the traditional Senior Week. During this long-awaited week we will remember the beautiful baccalaureate service, the senior-faculty banquet, class day, Camp Carson picnic and, finally, Commencement. We were fortunate to have Don Williams and Mrs. Elaine Pitman for class sponsors as they were always interested and active in our class projects.



Senior class officers Linda Branaman, vice president; Sara Clippinger, secretary; Ed Coleman, president; and Stan Wilson, treasurer, take a fresh look at their numerous duties.



Senior class sponsors Don Williams and Mrs. Elaine Pitman step outside to check the weather conditions before leaving for the Senior Picnic at Camp Carson.

BUBONIC PLAGUE, MALARIA and "termpaperitis" all signify one thing — sickness. The latter of these diseases was very prevalent among seniors in late October and early April. This disease is characterized by glassy eyes, vacant stares, ragged dispositions and sallow complexions. It is often accompanied by a time of broken family and social relations. These symptoms are brought on by the midnight struggle to complete the term papers for Advanced Composition.

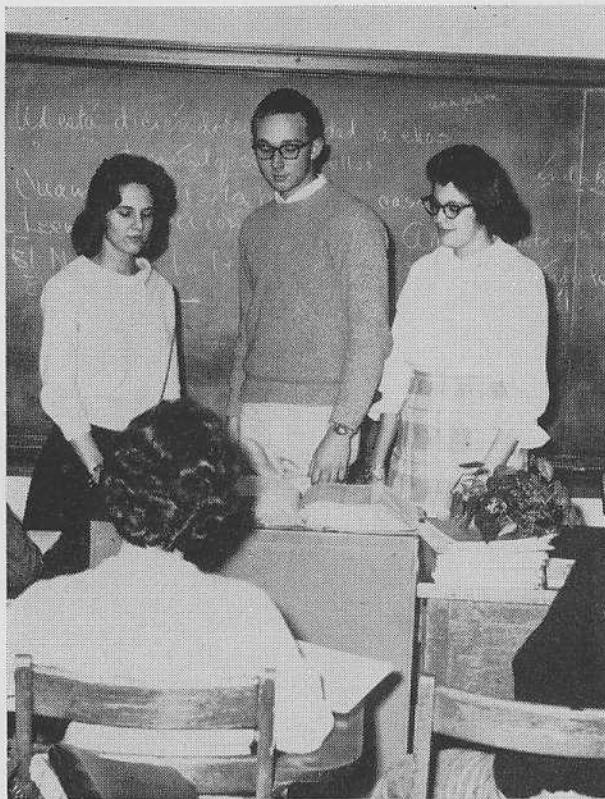
Approximately 370 of those laborious works were submitted for better or for worse. Imagine — the senior class of 1961 produced masterpieces totaling 614,000 words. Topics of the papers ranged from "The Habits of the Tsetse Fly" to "Wedding Customs of the 15th Century." One of the most familiar questions asked the victims of the epidemic was: "How long did it take to write your term paper?" The common answer given was: "Two boxes of pretzels, three cases of cokes, half a chocolate cake and four late movies."

John Gaisser points out the Berlin "trouble spot" to Lana Stone on a German map of Middle Europe, while Charles Robertson listens to a German tape recording in Robert Gatterer's advanced German class.



English, Language Courses Further Academic Skills

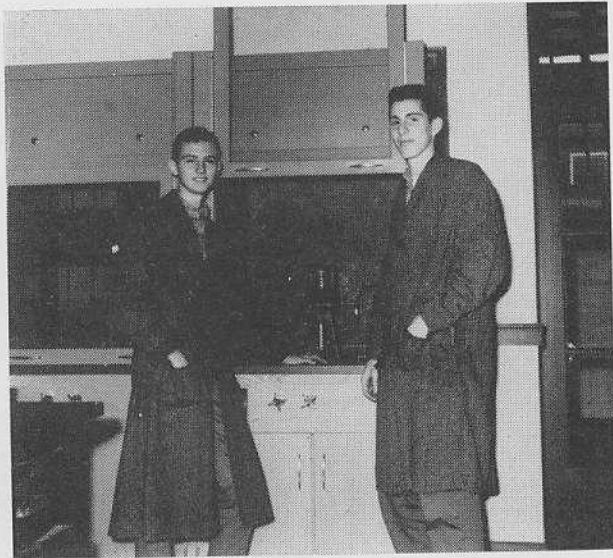
Tracing a disputed derivation in Mrs. D'Allis Calmes' seventh period Word Power class are Carmen Woods, Lowell Weber and Ann Pritchard.



Final speeches are an unforgettable milestone in the lives of sophomores. Denise De Boe leaves the rostrum for a gesture to emphasize her speech.



Science, Math Departments Produce Award Winners



Sidney Kushner and John Stevens inspect the new equipment in the chemistry laboratory. This renovation was only a part of the new construction program in the Science Department.

CONFORMING TO THE TREND in stressing science and mathematics in the educational system, Bosse has accomplished several achievements in these fields.

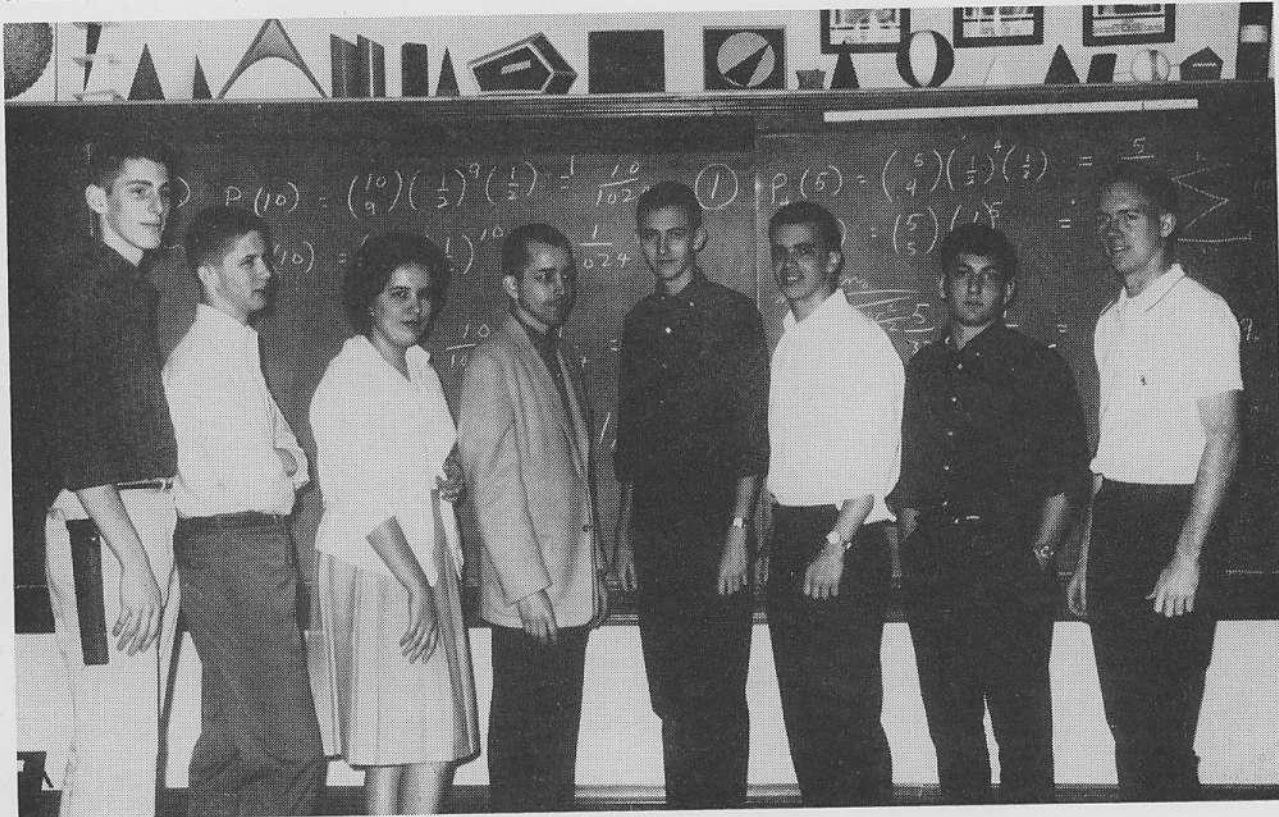
By attaining high scores on the mathematics proficiency tests given at Evansville College, ten students gained the right to participate in the state competition at Bloomington. Jim Marver, John Stevens, Roy Wyttenbach, Rick McRoy, Steve Edmonson and Jerry Kirves competed in the comprehensive division. Entering the geometry division were Bob Sonnemaker, Van Cline and Arthur Mansure. Carolyn Yeager participated in algebra competition.

Students also gained awards in the Science Department. Sidney Kushner, Charles Robertson and Steve Edmonson achieved the honors of first, second and third places, respectively, in the Chemistry Achievement Test given at Evansville College. Also winning places in the competition were Bill Luerssen and John Wilson.

Sidney and Charles were also recognized as outstanding science students by the Indiana Talent Search. They were named as two of the top fifteen winners in Indiana. This year gave a new look to the Chemistry, Physics and Biology Departments by the addition of new experimental facilities and furniture.

Top scorers in the Evansville College Math Contest, Sidney Kushner, Steve Edmonson, Linda Deer, Ted Hitch, Advanced Math instructor; John Stevens, Roy Wyttenbach, Jim

Marver and Rick McRoy, relax after displaying a difficult problem encountered in the contest.



History, Business Subjects Prepare Us For Future

HIGHLIGHTING THE SOCIAL Studies Department this year was the participation of Bosse students in the annual Mock Trial on April 13 in Judge Benjamin Buente's Superior Court chambers. Students participating in the civil suit trial were members of the sixth period American Problems class. Trial members included Mike Judd, DuWayne Keenen, Virginia Carter, Sandy Brock, Sondra Craddock, Jim Burch and Sharon Leach. Other participants were Sara Clippinger, Dan Ellerbrook, Jim Alsop, Dave Helm, Ann Clippinger and Sandra Bentley.

Industrial, Home Economics and Business Departments presented a well-rounded program in vocational and business fields.

Included in the Industrial program were courses in wood-working, metal shop, electrical shop, printing and mechanical drawing. A special project of the boys working in the electrical shop was to repair radios brought in by students.

Outstanding student in the Home Economics Department was Jill Hottenstein who entered a silk suit, which she made, in the Vogue Sewing Contest. Jill won first places in the local, district and state contests. These victories gave her an opportunity to be a contestant in the national competition.

Students in the Business Department participated in several contests for awards. They also practiced their skills by preparing all the tests given by the teachers.

Aveena Hancock checks the new mimeograph machine in the second period Clerical Practice class, before she prepares tests for teachers.



Bob Gowdy explains the voting procedure to Jache Wilhite during American Problems, when students "went to the polls."



Mike Judd, Virginia Carter, Sandra Craddock, Sandy Brock and DuWayne Keenen prepare their cases for the Mock Trial presented by the sixth period American Problems II class on April 13.

Classes Offer Domestic, Vocational Preparation

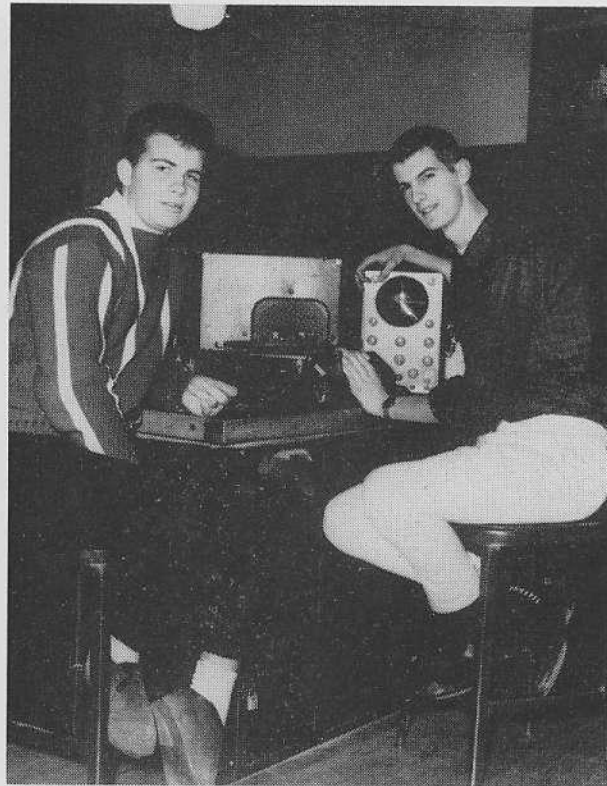


William Wiist, Jerry Johnston and Jim Baize prepare to serve Larry Russel, Elliot Sabel and Bobby Weber, who are

taking time out to test their culinary talents in Miss Carolyn Wills' senior boys' foods class.



Betty Banko, Sally Hoff and Anne Phelps demonstrate the procedure of bathing a baby in the Home Nursing class.



Larry Hayes and Larry Thomas demonstrate some of the equipment available in the electrical shop to promote electronic skills.

Spotlight On Music



Centered around a South American theme was the Copaca-Band-A, Jan. 27, sponsored by the band and orchestra. The

dance band under the direction of Jim Alsop was featured at the dance along with several vocal and dance routines.



Rehearsing the finale for "The Sound of Music" are the members of the cast, who performed at several local organizations.

COMPLEMENTING THE music and journalistic activities were the dance band, "The Sound of Music" troupe, major-ettes, Quill and Scroll Society and Carolyn Schmitt, "School Spirit" photographer.

Through selected combos the dance band provided spirited music for our pep assemblies. The dance band in its entirety played for the Copaca-Band-A, the purpose of which was to raise money to buy equipment for the marching band. This event was successfully chaired by Barbara Woodring.

Several students of the Choral Department presented Rogers and Hammerstein's "The Sound of Music" at various clubs and organizations. One of their appearances included a thirty minute television presentation. Included in the cast are Mike Judd, Dennis Biggs, Sandi Stinson, Joanne Hufnagel, Lee Ortmeier and Vicki Foster. Other members include Marsha Gauntt, Ed Letsinger, Allen Lewis and Tom Wilhelmus.

Marching regularly as varsity majorettes were Cynthia Moll, Barbara Brown, Jerilyn Hess and Shirlie Sample. They were headed by drum major Charlie Madden. Alternating in the two other varsity positions were Nancy Crouch, Marilyn McCutchan, Judy Courter, Candy Crosley, Sharon Meyers and Sandi Stinson. These girls joined with six others to form the pre-game corps.

Fifteen new members were initiated into the Quill & Scroll Society at the end of the first semester. Inductees on the editorial staff were Sandy Brock, Martha Duncan, Rosalind Fine, Marc Hallert, Phyllis Lowery, Mary Poe, Pam Pride, Charley Storms, Pat Watts and Barbara Woodring. New ad staff members were Ann Clippinger, Sara Clippinger, Joy Hankins, Donna Wolf and Phil Barnett.



Senior majorettes Jerilyn Hess, Sandi Stinson, Cynthia Moll and Barbara Brown demonstrate the grace and skill they exhibited during the marching season this year.

And On School Spirit . . .

Members of the Quill & Scroll Society relax after a day of journalistic activity. Standing are Linda Branaman, Deane Miller, Marc Freson, Doug Melvin, Sandy Barnett and Nick

Freeman. Sitting are Steve Schnacke, John Gaisser, treasurer; Nina Witherspoon, president; Carol Huston, vice president; Judy Palmer, secretary; and Carolyn Schmitt.





Our Gang Gathered To Cheer



WITH DESIRE, determination and top-notch coaching, the Bulldogs completed another successful sports year which was headed by a hard won pair of sectional nets snatched by coach Herman Keller's netters.

With drive, the hardwood crew posted a 16-6 season record to climax one of the best round ball seasons for several years. The football team made its way back to the road of respectability after several years of disappointing thumpings. Under direction of coach Bill Russler, the grid-iron guys made opponents sit up and take notice by opening the season with several lopsided victories.

On guts and who knows what else, the cross country team cut down all citie's foes except powerful North. Coach Max Smith conditioned the Harriers for a fourth spot in the SIAC meet which was held on the hilly, Tell City golf course. Coach Smith's cindermen slipped in the city track meet this season to the fourth spot as four city records fell and one was tied.

With fury in their rackets, the racketmen, coached by Herman Keller, dropped one meet, to intra-city foe Mater Dei, which cost them the city championship. Bulldog golfers carried big sticks as they swung past most foes by big margins behind the guidance of coach Bill Russler. The Red and Gray diamond crew surpassed the mediocre records of seasons past, posting three decisive wins under the guidance of coach Joe Unfried.

So, four years of sports competition ended for many athletes as the diplomas were passed out. However, the freshman and reserve squads left most with the premonition that a bright future lies just ahead.



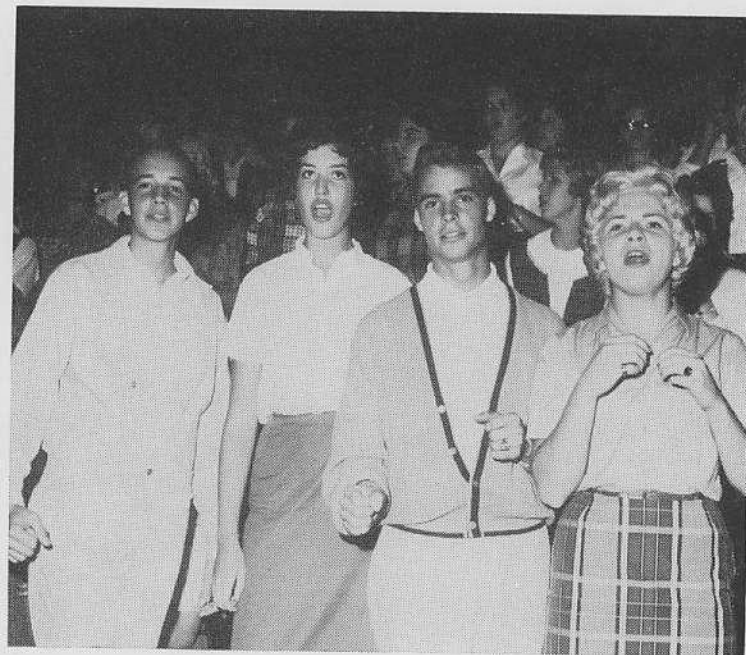
Hail to
(sittin
(stand
sity o
captai
crown

They Led Us In Spirit, Sportsmanship, Success



Posing with Benjie, the Bulldog mascot, are the varsity cheerleaders for the 1960-'61 school year. From left clockwise are Sara Clippinger, Mardee Royer, Ann Clippinger, Vicki Foster, captain, and Karen Stofleth.

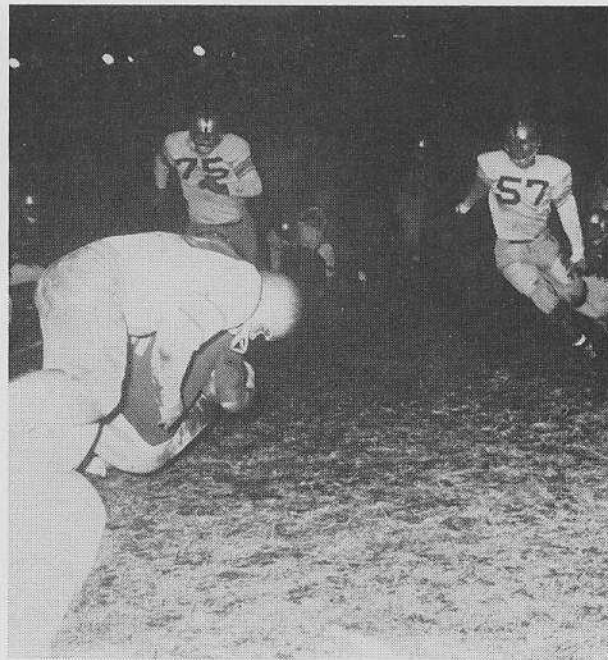
Pep Club officers who spirited us through a successful basketball season are Nick Freeman, vice president; Joan Postleweight, secretary; Bill Dixon, president; Lee Ortmeyer, treasurer.



Hail to the queens! Pictured here are Vicki Foster (sitting), football queen, and Ann Clippinger (standing), basketball queen. Vicki has been a varsity cheerleader for two years and was elected captain last year. Ann, also a cheerleader, was crowned queen by center Larry Denton.



Bulldog gridgers huddle together before a game at Enlow Field. During these few seconds the team receives pep and last-minute instructions from coach Bill Russler.



Bulldog men attack opponents, displaying the speed and vigor that led them through the year.

They Fought Hard All The Way



Steve Smith (29) blocks out one formidable opponent as Bulldog "toe" Nick Miller analyzes the situation.

WITH DESIRE AND drive, the Bulldog gridiron eleven blocked, kicked and ran to a 4-6 season despite the phenomenal strength of city foes.

Capitalizing on the swiftness of the backfield, the Bulldogs lowered the boom on an average Princeton team to the tune of 21-0 in the season opener. After several unproductive seasons, the Bulldog squad seemed to be on the victory trail once more. Again demonstrating spirit and drive, the Red and Gray mowed down the Boonville eleven with an impressive 47-6 triumph. The 'Dogs then ran head on into a rugged New Albany crew and came out on the short end of the score to suffer their first set-back. Next the Bulldogs matched strength with the North Huskies, who had a swifter than thou backfield, and dropped the intra-city tilt, 27-7, after giving the Huskies plenty of resistance in the first half. Still dazed by the North defeat, the Red and Gray was felled by a powerful Vincennes crew.

In order to get back onto victory lane, the 'Dogs overran Memorial, last year's state champs, by a tally of 20-7; however, the victory string was short-lived as Paducah Tilghman flexed their muscles and overpowered the Bulldogs with a 28-13 decision. Then, in an intra-city contest, the Red and Gray was tripped by a smaller Mater Dei crew, 7-0, in a real barn burner.

Avenging last year's 33-0 drubbing by Central, the 'Dogs brought home a hard fought 20-13 victory to again break a brief losing streak. The Bulldogs finished the season by being thumped, 47-7, by a more powerful, rugged-lined Reitz Panthers, the mythical state champs.

Thus, the Bulldogs climaxed their best gridiron season since sharing the city title in 1957. The instilling of spirit and drive in the crew, and the success on the field were due to the fine coaching job of head coach Bill Russler and his up-and-coming assistant Joe Unfried.

Ou

Bosse
Bosse
Bosse
Bosse
Bosse
Bosse
Bosse
Bosse
Bosse
Bosse

Jim W
sity sq
him th

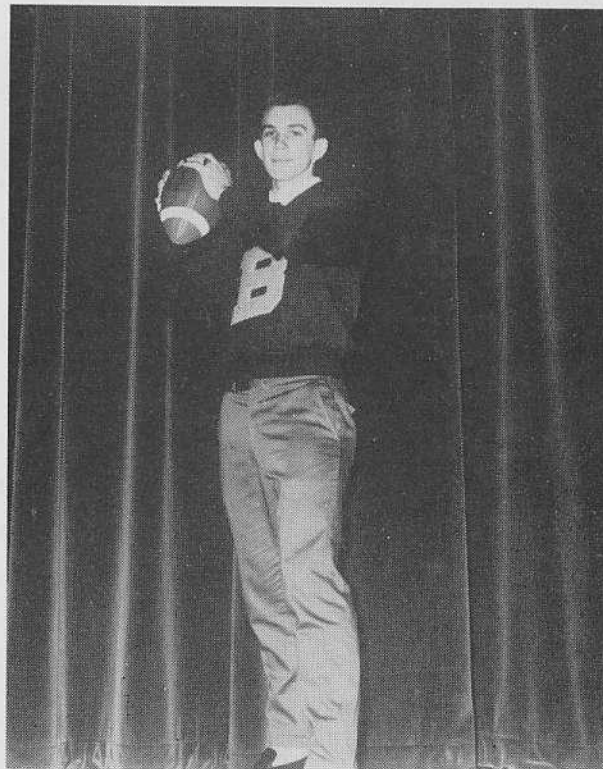


Varsity
row l.
H. Llog
J. Ant
Miller,
heiser,
(third
Scales,

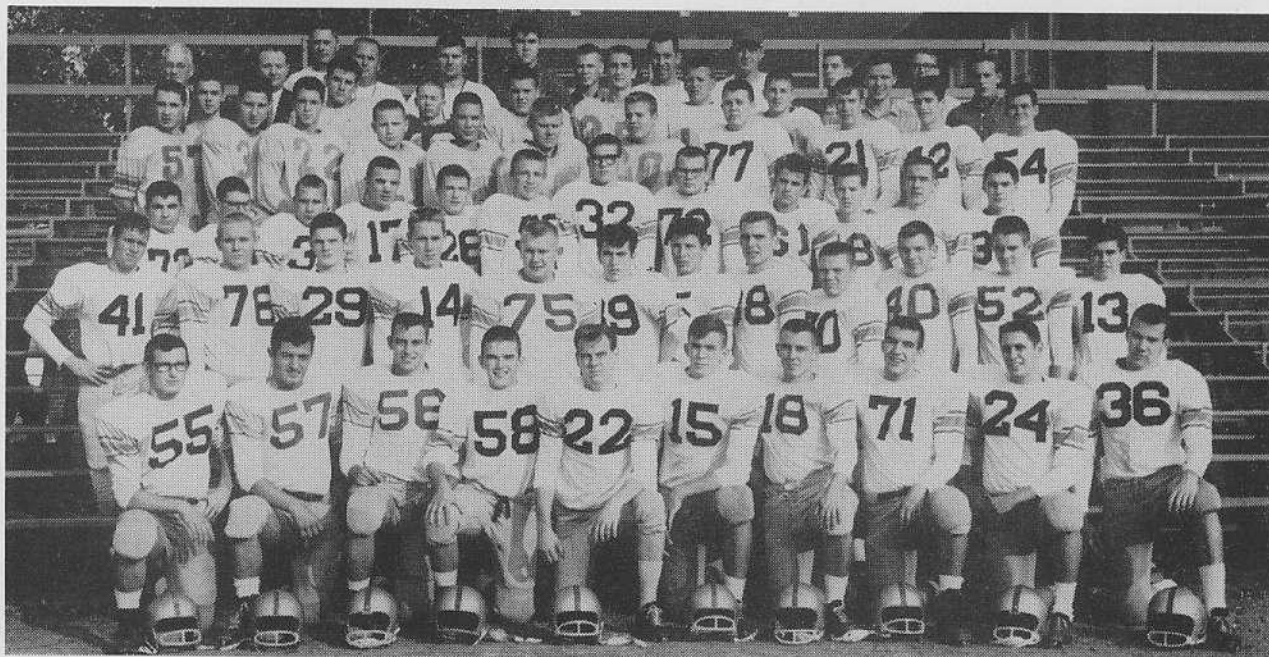
Out Of Grid Slump, Back To Road Of Recognition

VARSITY RECORD

Bosse	21	Princeton	0
Bosse	47	Boonville	6
Bosse	13	New Albany	14
Bosse	7	North	27
Bosse	6	Vincennes	33
Bosse	20	Memorial	7
Bosse	13	Paducah	28
Bosse	0	Mater Dei	7
Bosse	20	Central	13
Bosse	7	Reitz	47



Jim Wiesman, ending his second and final year on the varsity squad, demonstrates one of the techniques that earned him the 1961 football Kiwanis Award.



Varsity football Bulldogs for the 1960-'61 season are (first row l. to r.) E. Frank, A. Nation, J. Humphrey, B. Bradley, H. Lloyd, J. Wiesman, B. Pierce, A. Albrecht, D. Vann and J. Antey; (second row) R. Biggs, J. Adams, S. Smith, N. Miller, T. Niedermeier, J. Johnson, D. Ashby, C. Dannheiser, M. Kelly, S. Rodman, J. Liggett and J. Hancock; (third row) W. Allen, L. Griepenstroh, G. Anderson, R. Scales, D. Morgan, S. Cook, L. Fulkerson, J. McIntosh, B.

Hopgood, J. Wooton and S. Bosse; (last row) M. Shear, J. Helbig, D. Hewins, T. Whitledge, B. Hall, B. Ledbetter, T. Young, P. Walker, A. B. Holtz, R. Winters, R. Whitsell, Principal David Dudley, M. Oliver, Charles McClary, Art Acker, W. Eakins, Coach Bill Russler, C. Kello, Coach Joe Unfried, A. Harple, J. Gilmore, B. Williams, D. Nettles, C. Buttrum, V. Mann, T. Baize, Coach Don Williams, Coach Al Buck, L. Moon and C. Storms.

They Shot, They Swished, They Won

VARSITY RECORD

Bosse	67	Huntingburg	53
Bosse	46	Tell City	45
Bosse	58	Boonville	46
Bosse	55	Princeton	54
Bosse	62	Central	64
Bosse	61	Memorial	48
Bosse	54	Jasper	78
Bosse	61	Columbus	56
Bosse	53	Daviess County	58
Bosse	54	North	80
Bosse	62	Lincoln	58
Bosse	84	Mt. Vernon	63
Bosse	71	Reitz	51
Bosse	84	Vincennes	50
Bosse	83	Mater Dei	53
Bosse	69	Madison	70
Bosse	71	Bloomington	48
SECTIONAL			
Bosse	66	Reitz	59
Bosse	68	Rex Mundi	61
Bosse	55	Central	53
REGIONAL			
Bosse	68	Castle	54
Bosse	53	Tell City	56



Big Larry Denton, star center for the sectional champ Bulldogs, slices off his part of a victor well earned.



Bulldog netters for the 1960-61 season are bottom, l. to r.: Eddie Brown, Dean Ashby, Eric Sullivan, Steve Hopkins, Jim Wiesman and Jerry Southwood. In the top row are the

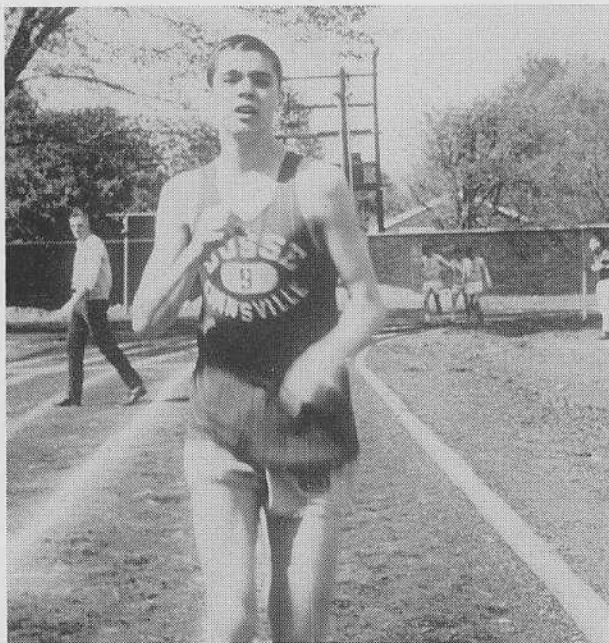
following: John Wilson, Nick Miller, Chuck Dannheiser, Larry Denton, Gary Grieger and Eddie Coleman.

Cindermen Shine; Records Fall Under Flying Spikes



Bulldog Harriers participating in the 1960-'61 season are (front row, l. to r.) Jim Forman, Malcolm Koch, David Grant, Larry Siesky, Marv Freson, Bruce Thompson and

Paul Black; (second row, l. to r.) Clarence Blair, David Wastjer, Steve Knight, Ed Brown, Art Mansure, Warren "Shades" Henry, Ed Coleman, Allen Siesky and Rick McRoy.



Senior Marv Freson, Bulldog distanceman, displays the form which aided him in capturing a second place in the half mile in the city track meet and a third slot in the SIAC contest.

LARRY SIESKY, four-year cinder whiz at Bosse, led the Bulldog track team with breath-taking efforts during his senior year.

Cindermen opened the season with a good effort in the Hoosier Relays at Bloomington, the largest indoor high school track meet in the world, to capture a third spot in the mile-relay. The 'Dogs entered their first dual meet as a heavy favorite; however, underrated Reitz, City and SIAC champ, toppled the Thinlies, 69-40, with their amazing depth and spirit. The Bulldogs charged back and unleashed their anger on hapless Memorial, 95-14, taking twelve of thirteen first places. Captializing on the strength of distance runners, the Red and Gray knocked off Lincoln, last year's city champ, to the tune of 65-44. Running into an equally well-balanced club, the cinder squad fell to North's sprinters and hurdlers to drop the issue, 57 $\frac{1}{3}$ -51 $\frac{1}{3}$.

In the city meet, the Bulldogs attempted to pull an upset on Reitz and North. However, the depth of Reitz, the sprinters of Lincoln and distancemen and depth of North proved to be too much for the shocked Thinlies. Reitz nudged past Lincoln, 48 $\frac{1}{2}$ -46, and North held off Bosse, 31 $\frac{1}{3}$ -30 $\frac{2}{3}$. Four records were broken and one was tied on the mild April day. Siesky screamed through a half-mile in the blistering time of 1:59.1 to lower his own city record by one half of a second.

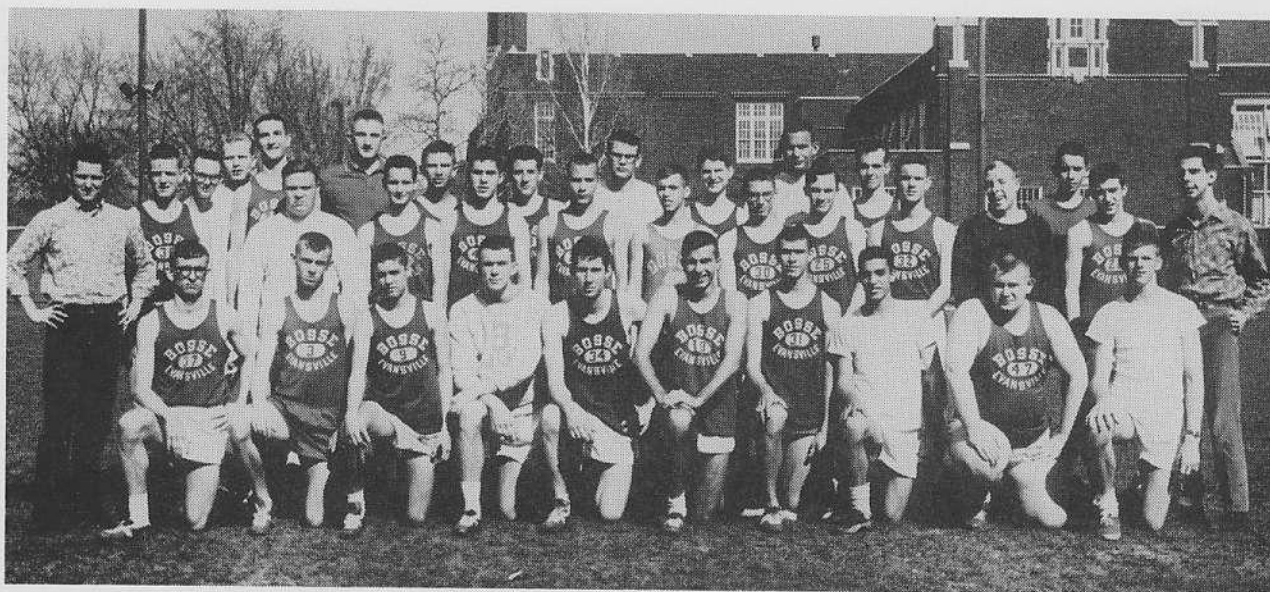
Next, the Bulldogs battled tooth-and-toenail with fourteen other clubs to grab a fifth spot only 8 $\frac{1}{3}$ points behind the winner, in the SIAC contest. In the final dual meet of the season, the 'Dogs smothered city rival Central, 85-24.

Sie

Track
Larry S
ford, E
meier a
borne,
Georges

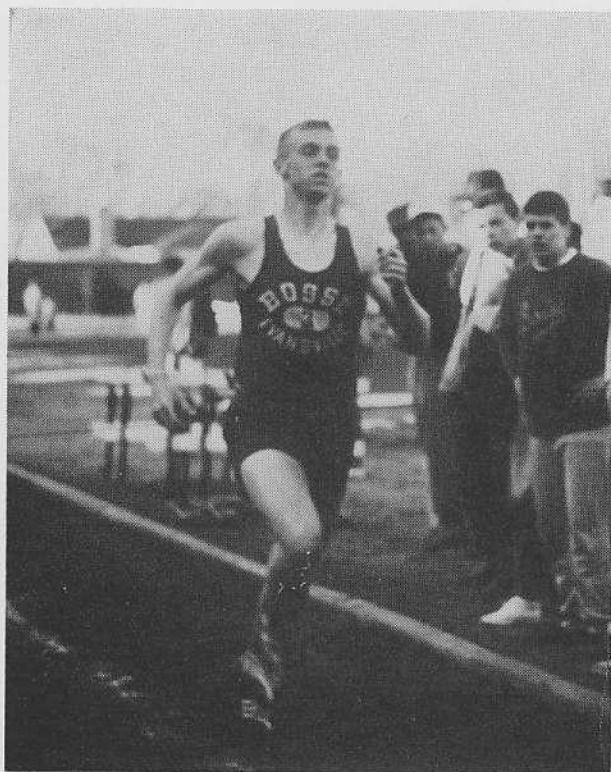
Cinde
won h
he can

Siesky, Relay Team Lead Parade Of Sharp Efforts

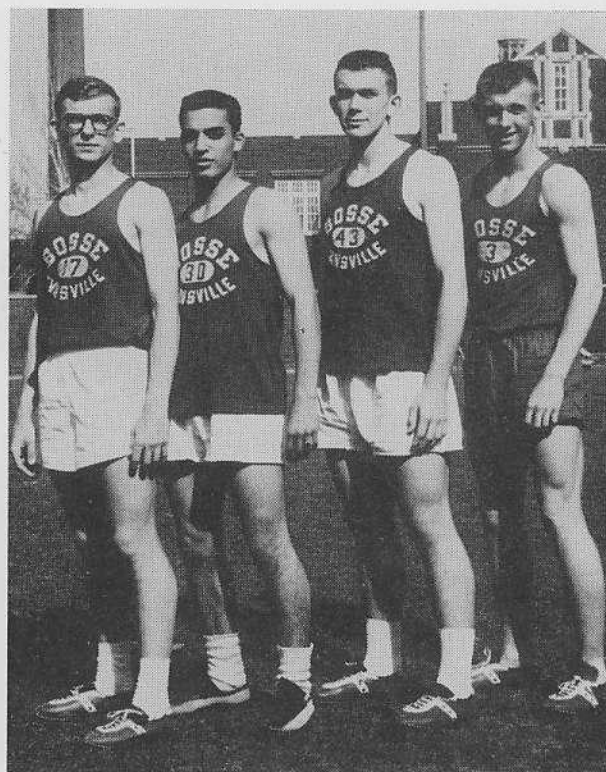


Track men for this season were (kneeling) Malcolm Koch, Larry Siesky, Marv Freson, Jim Wiesman, Dennis Rutherford, Ed Coleman, Steve Hubele, Jim Forman, Tom Niedermeier and John Gauer; (second row) Manager Russell Osborne, Chuck Wey, Mike Kelly, Bruce Thompson, Bill Georgeson, Greg Anderson, Bob Kinkle, Larry Griepen-

stroh, Art Mansure, Don Walling, Don Blemker, Don Wells and Manager Leland Moon; (third row) Tom Gough, James Riley, Jack Gilmore, Manager Wally Hebner, Steve Knight, Charles Eakins, John McIntosh, David Grant, Gene Lockyear, Bob Adams and Alan Siesky.



Cinder whiz Larry Siesky displays the famous form that won him third place as a junior in the half mile. As a senior he carried the best time into the state.



Malcolm Koch, Jim Forman, Jim Wiesman and Larry Siesky demonstrated agility and speed in the half-mile relay this season.

Diamond Squad, Golfers, Racketmen Carry Big Sticks



Taking a breather from swinging' the racket, members of the '61 tennis team pose with Coach Herman Keller. Members are John Scott, Tom Hyde and Bill Koch in the first

row. In the second row are Gordon Tabor, Bob Weber, John Wilson and Coach Keller.



Before leaving for the diamond Nick Miller, Jim Meyer and Butch Pierce pause to discuss the game. Nick pitched a no-hitter against the Memorial Tigers.



Bob Royster and Bill Dixon pause a moment in order to look back upon the past successes of the golf team. Bob is the only four-year letterman on the team.

Diamond
J. South
sell; (mi
ning, S.

Linksm
Whitl
Hopkins



Diamond men for this season were (bottom row) S. Crum, J. Southwood, L. Heldt, R. Biggs, D. Knight and B. Russell; (middle row) J. Alsop, K. Brisk, J. Eagleson, T. Dunning, S. Vowels, E. Sullivan and G. Katterhenry, student

manager; (top row) Coach Art Acker, G. Hambley, J. Antey, D. Ashby, S. Edmondson, J. Meyer, B. Pierce, N. Miller and Coach Joe Unfried.



Linksmen this year were (top l. to r.) Bob Hironimus, Tony Whitledge, Tom Young, Bob Guenther, Steve Royster, Steve Hopkins and Dan Hewins; (bottom l. to r.) John Gaisser,

Bob Royster, Roy Wyttenbach, Charles Storms, Alan Carmack, Bill Dixon and Joe Luigs. The golf team was under the direction of Coach Bill Russler.

Intramural, GAA Offer Mirth

DURING THE SCHOOL YEAR, students have a chance to participate in many games, intramural and after-school sports events.

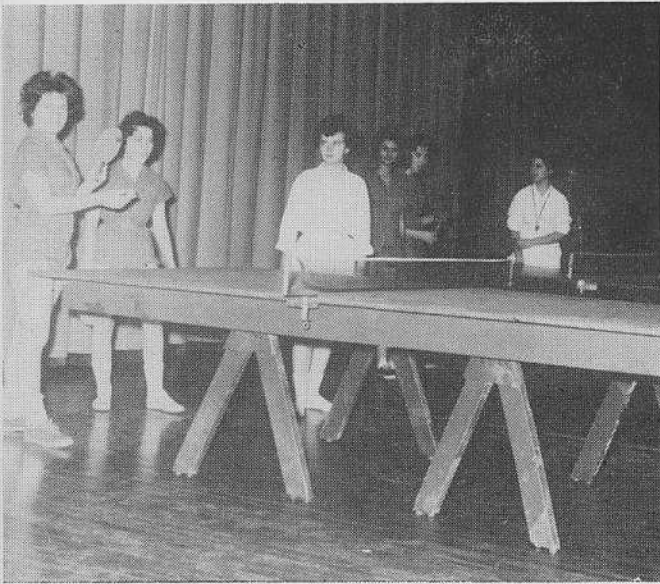
In the physical education classes, girls have an opportunity to participate in various sports as well as to obtain plenty of exercise. Gym classes help girls in developing their sportsmanship, physical fitness and leadership ability. Also, these classes provide the girls opportunities for social contacts and a chance for recreation and relaxation.

Under the supervision of Mrs. Doris Griffin and Mrs. Marilyn King, the Girl's Athletic Association met every Monday after school. The purpose of this organization is to give girls who enjoy sports an opportunity to participate. Some of the sports the girls engage in are soccer, basketball, softball, volleyball, badminton, deck tennis, ping pong, bowling and swimming. A special event of the year is the spring banquet in May in which the girls are given awards. Ribbons are given to each winning team of a sport. Pins, sweaters and chevrons are awarded according to a point system.

Another after school sports event is the intramural basketball league, which gives many boys who did not play varsity basketball a chance to play. The Casinos, a team composed of seniors Dave Ellison, Joel Schaeffer, Dennis Rutherford, Jim Burch, Steve Frasier, Larry Logsden, Bill Weber and Larry Russell, won the championship. The intramural season ended with a game between the Casinos and "Dudley's Darlings," a team consisting of faculty members Don Hartig, Jack Benjamin, Roy Long, Walden Crabtree, Joe Unfried, Don Williams, Jack Lewis, Charles, Mathieu and Al Buck. The Casinos won over the faculty members with a score of 18-15.

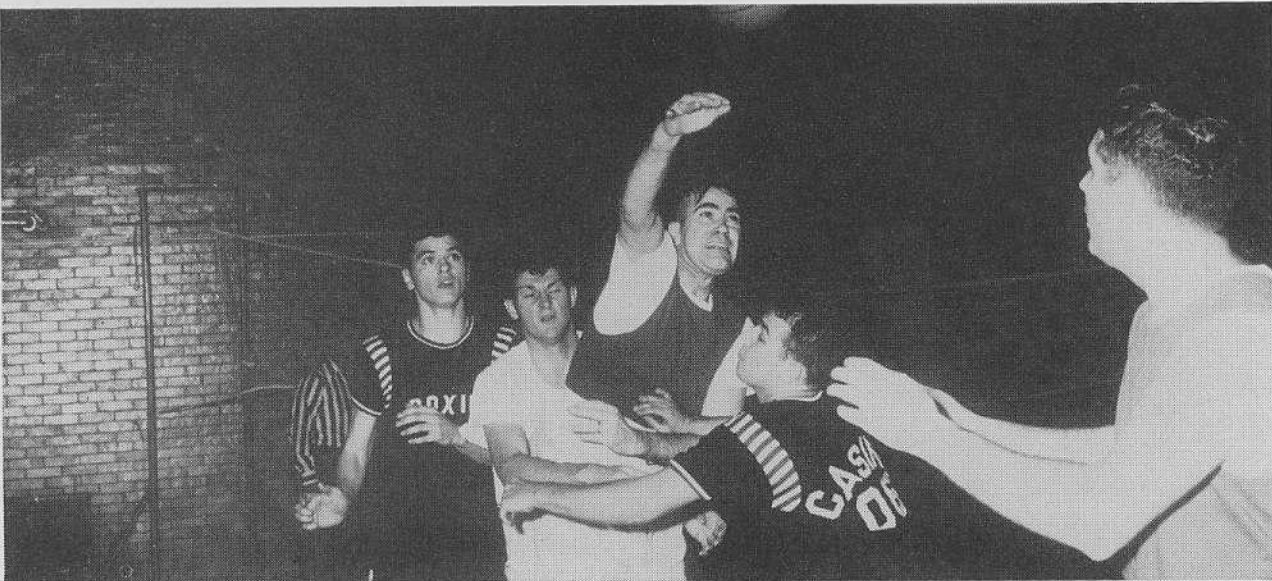
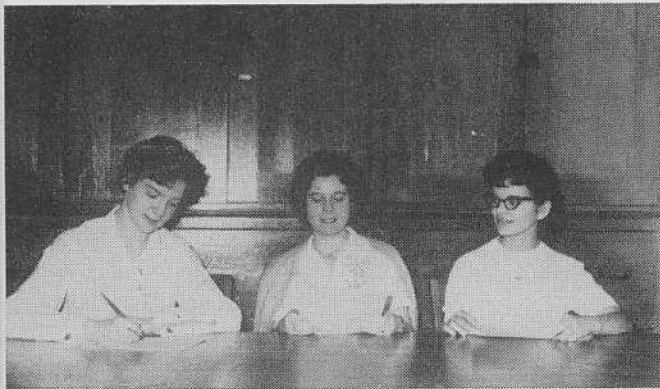
These events give everyone an opportunity to engage in some activity. These sports are a good source of relaxation as well as recreation.

After completing a perfect season the Casinos earned the right to play the Dudley's Darling. Balanced scoring prevailed and the Casinos won 18-15. Pictured are Steve Frasier, Dave Ellison and Larry Russell.



Girls gym classes demonstrate one of the many sports they participated in throughout the year.

GAA officers Cheryl Jeffers (secretary-treasurer), Judy Overton (president) and Rickey Lane (vice president) diligently plan the year's activities.



On the F
(l. to r.)
Hatfield,
Second r
Coy, Joh
Pittman.

Fr

Picture
basketb
manage



On the freshman football team for the 1960-61 season are front row (l. to r.) Tom Rainey, Pat Ryan, Doug Campbell, Don Burke, Ron Hatfield, Dwight Langsdale, Charles Steber and Gordon McMasters. Second row (l. to r.) Tim Bragassa, Bob Faul, Dick Burton, Jim McCoy, John Freeman, Mike Carr, Narl Phelps, Mike Corey and Jack Pittman. Third row (l. to r.) Mike DePriest, Scott Frohbieter, Don

Perigo, Don Lloyd, Bob Litsey, Tom Barr, Greg Hunt, Dan Roberts, and Jim Baker. Last row (l. to r.) Coach Don Williams, Barry Hart, Dan Ortmeyer, Bill Lukeman, Rick Hohimer, Tom Nicoson, Bob Hewlett and assistant coach B. Hoppen. Missing when the picture was taken were Rex Legler, Dennis Minton, Dave Julian, Bill Fligel-
taub and Jim Wallace.

Freshman Squads Make Future Look Bright

Pictured after a big season are the members of the freshman basketball team. They are first row, left to right, D. Laffoon, manager, J. Gilham, T. Primm, D. Riggs, P. Baker and B.

Hewlett. Second row M. Carr, B. Newman, N. Phelps, R. Hohimer, K. Mills and S. Riepe complete the list.



Our Gang Gathered For Pictures



AS WE ENTERED THE HALLS of Bosse as freshmen, there were people everywhere of every size imaginable. Being somewhat green, we were amazed at the dignity of the seniors. They knew just where they were going. Why, then, didn't we know where we were going? Our freshman year was one of experience and inexperience. We were guided through the "trying" times by our counselors. The cooks added their special dishes to the cafeteria giving us nourishment in our quest of knowledge. The custodians kept the school in working condition, making the rooms clean and orderly for us to clutter with trash. Near the end of our freshman year we had finally learned our way around the huge institution. After a long summer of loafing, we once again entered Bosse. This time, however, we were a faded green with just a touch of freshman in us.

In our four years at Bosse we met many people. We gained some new friends while we lost the old. Eventually our old acquaintances left "our" group to that of others. In the later part of our sophomore and the early part of our junior year we were finally allowed to drive by ourselves. This great accomplishment brought on new friendships with those of other schools.

Near the end of our senior year, we were one big happy family looking forward to that wonderful day of June 8, 1961 . . . our commencement. Several months before this long awaited day, we were fitted for our caps and gowns. This day was the first of many which indicated that the time was getting near. As we stood in line, we knew we would never again be together in this same state of youthful mind. We looked back over our wonderful high school days as green freshmen, sophisticated sophomores and jolly juniors. But not letting the past get a hold of us, we looked to the future. Yes, this was the end of a beginning. The end of our wonderful world of youth but the beginning of adulthood.



HOW DO YOU measure a man? Do you measure him by the size of his collar, his hat or his shoes? Perhaps, but then again that is not the true measure of the man. Perhaps it is by great wealth or great fame — but no — again, that is not his true size. Let us measure David Dudley and see the real stature of the man.

Mr. Dudley began life in Corydon, Kentucky High School, received his Bachelors Degree from the University of Kentucky and his Masters Degree from the University of Tennessee. With this foundation he began a forty year career as an educator.

His first two years as a teacher were in North Dakota. In September of 1923 he came to Bosse as a mathematics teacher and taught here for thirteen years. His administrative abilities and his dedicated interest in the welfare of young people were recognized by the school system and in 1936 he was named principal of John M. Culver School, a post he held for thirteen years. During part of those thirteen years he had the added responsibility of serving Wheeler School as its principal. In 1949 he was named Acting Director of Elementary School Education and in

1950 he came back to Bosse as principal.

He has effectively used his ability for leadership in his community as well as in his profession. He has served his community as President of the Rotary Club, as a director of the Welfare Council, as a member of the Executive Committee of the Vanderburgh County Advisory Health Council and for the past seven years he has been a member of the Selective Service System, Local Board No. 270. He has been president of the Indiana Association of Elementary School Principals, the Evansville Schoolmen's Club, the S.I.A.C. and the Alpha Zeta chapter of Phi Delta Kappa.

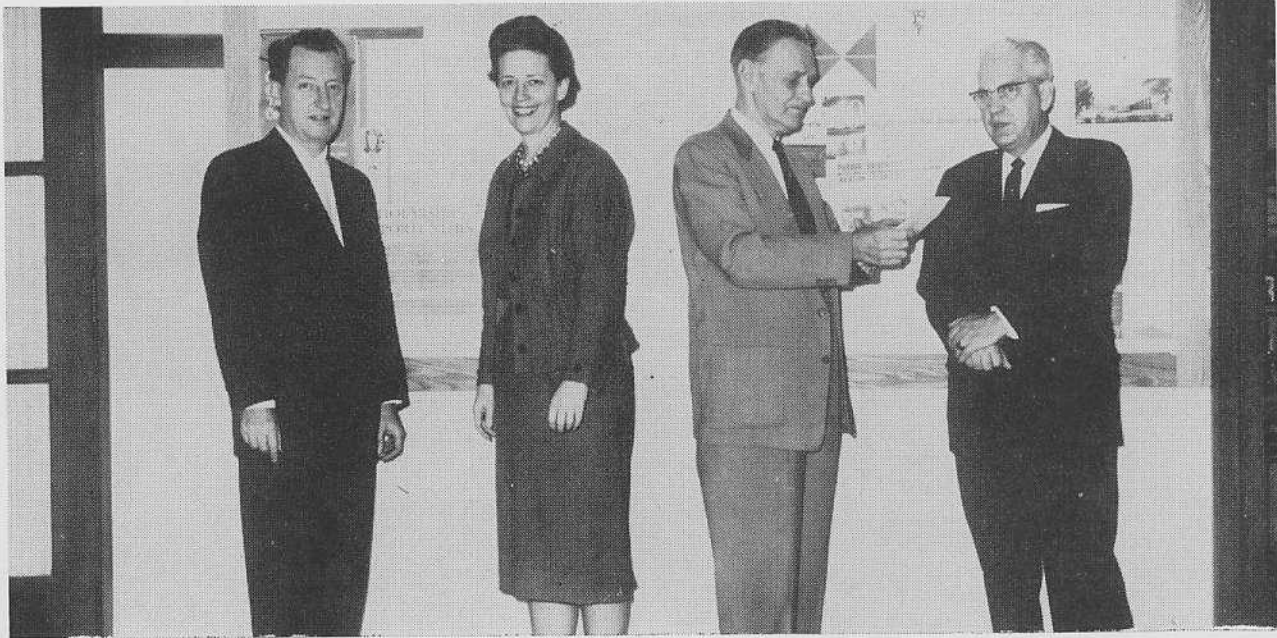
Service then is a part of the measurement of the man, but there is more. His word of encouragement to the teacher whose day has been long and hard; his great sense of humor; his kindness to those in need; his ready friendship to all, these too must be added in.

No, we have not measured great fame, or great wealth, nor is the collar size very large, but when we measure the man, David Dudley, we can only offer one hope — may we all grow so tall.

Among
spent
us out

Takin
athlet
taries.

Counselors, Secretaries Guide Through Our Years



Among the busiest people here were our counselors. They spent many hours helping us choose our vocation, keeping us out of trouble, and guiding us in the right direction.

From left are Paul Jennings, assistant principal; Miss Helen Stoutenborough, dean of girls; Ralph Mayes, junior-senior counselor and William Couch, freshman-sophomore counselor.



Taking care of our high school records, our attendance, athletic events and TV classes were the duties of the secretaries. From l. to r.: Mrs. Lou Jean Craddock, Mrs. Pat

Smith, Mrs. Dolly Bertram, Miss Jeanette Edmund and Miss Janet St. Clair.

Our Faculty Taught Us, Advised Us, Inspired Us



ART ACKER Driver Education MISS M. AGNEW English LEE ALBIN Mathematics MISS L. BADGER Language AUGUST BANKO Social Studies RAY BEGARLY English



JACK BENJAMIN Mathematics PHIL BEVARLY Physical Education CURTIS BROWN Industrial Arts ALFRED BUCK Social Studies MRS. M. BURNS English MRS. D. CALMES English



MRS. E. CASTLE English W. CRABTREE English MISS L. CUPP English J. M. DAVIS Science MISS DOWNEY Social Studies MRS. T. DURRE Business



MRS. EMERSON Home Economics MISS D. ERSKINE Mathematics MRS. M. ESKEW English R. GATTERER Language MRS. M. GAUNT English GEO. GOERLITZ Science



ROBERT COUGHA Business A. GRABHORN Mathematics MRS. D. GRIFFIN Physical Education MRS. M. GRONED English D. HARTIG Mathematics MRS. D. HESS Home Economics



TED HITCH Mathematics R. HYATT Fine Arts L. B. JOHNSTON Fine Arts HENRY KELL Social Studies H. KELLER Physical Ed. A. KILPATRICK Mathematics



MRS. M. KING Physical Ed. JACK LEWIS Driver Education ROY LONG Mathematics MRS. M. LUKENS Attendance MRS. M. MANN Social Studies C. MATHIEU Science



CHARLES MAY Industrial Arts C. McCLARY Science MRS. S. MCGILL Librarian R. MILLER Industrial Arts A. MURRAY Social Studies Mrs. NORDHAUS Nurse

*Biography
Handwritten*



MRS. PADGETT English W. PEMBERTON Science MRS. E. PITMAN English G. REFFETT Industrial Arts MRS. ROBERTS Business JOHN ROBERTS Social Studies



MISS M. ROSE Business ROBT. RUSSELL Industrial Arts WM. RUSSLER Physical Ed. A. SCHWENDEL Science MISS SHELTON Business MAX SMITH Physical Ed.



M. SNETHEN
Fine Arts



E. SULLIVAN
English



Mrs. THOMPSON
English



JOE UNFRIED
Physical Ed.



MRS. H. WEBER
Business



MRS. WENNER
English



MRS. H. WIERS
Business



D. WILLIAMS
Social Studies



MISS C. WILLS
Home Economics



Leonard Broshears, head custodian, and Mrs. Mildred Beyer, head matron, kept the school clean and orderly for us.

Preparing our lunches everyday were the helpful cafeteria workers. They are first row, l. to r.: C. Seabaugh, V. Swertferger, B. Dannenberg, I. Rogers and F. Erdman, manager. Second row, l. to r.: E. Berridge, J. Frysingler, M. Sapp, A. Ragon, A. Kleinhans, M. Adams, J. Bell, I. Hammers, M. Selton, L. McCellan and M. Bickmeier.



ADAMS
Football . .
ball . .
Cum La
ADAMS
Arship I
Etiquett
Ameri
ALBRE
Football
Com Co
Co-Chri

ALEXA
Transpo
ANTEY
Football
ASBRO
. . . Gu
tion . .

ASHBY
ball . .
Varsity
Club . .
BACKS
Club . .
S & C
BAILEY
. . . Mu



Our Gang

ADAMS, JAMES LEONARD . . . Fr, Res, Varsity Football . . . Fr, Res Track . . . Intramural Basketball . . . Football Club . . . DE Club . . . S & G . . . Cum Laude

ADAMS, JUDITH ANN . . . Cum Laude . . . Scholarship B . . . Jr Red Cross . . . Modeling Club . . . Etiquette Club . . . Future Business Leaders of America . . . S & G

ALBRECHT, ANDREW HENRY . . . Fr, Res, Varsity Football . . . Varsity Track . . . S & G . . . Sr Prom Com Co-Chrm . . . Football Club . . . Jr Prom Com Co-Chrm . . . Student Council . . . Fr Basketball

ALEXANDER, RANDALL . . . Locker Club . . . Transportation Club . . . S & G

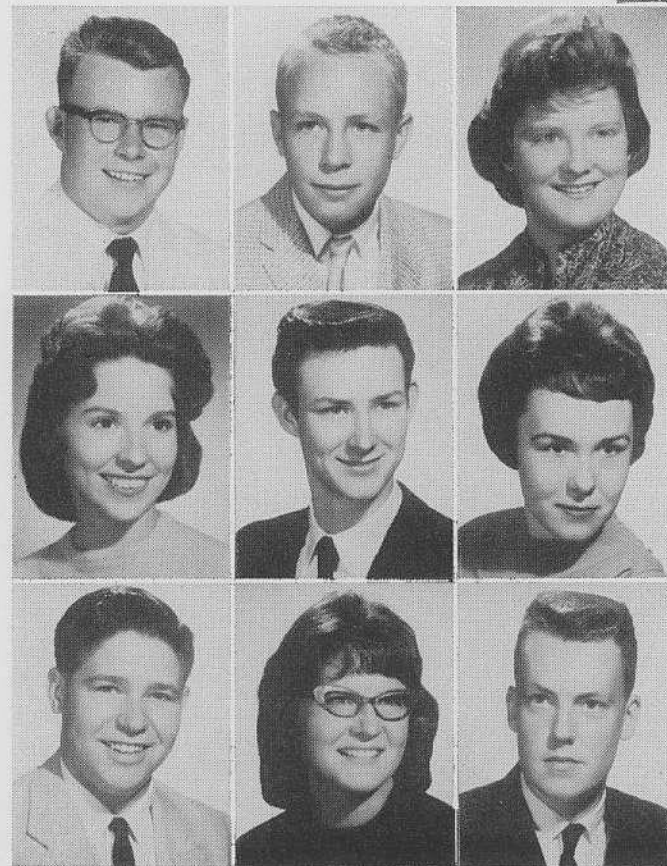
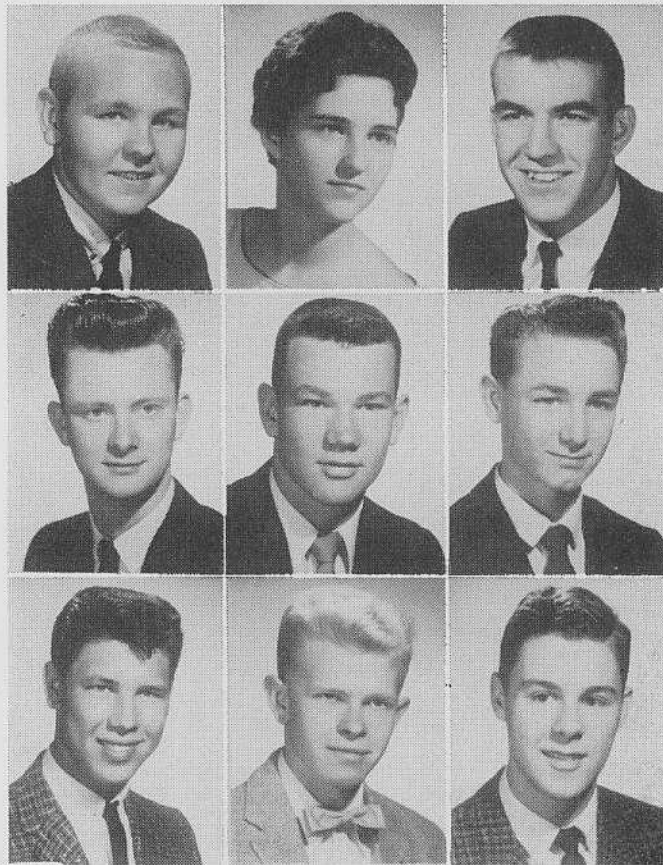
ANTEY, JAMES ALFRED . . . Football Club . . . Football . . . Baseball . . . S & G

ASBROCK, GERALD BERNARD . . . Science Club . . . Gun Club . . . Coin Club . . . Christmas Production . . . Camera 35 Club Sec . . . S & G

ASHBY, RONALD DEAN . . . Fr, Res, Varsity Football . . . Fr, Res, Varsity Basketball . . . Fr, Res, Varsity Baseball . . . Football Club . . . Basketball Club . . . S & G

BACKSTROM, ROBERT EUGENE . . . Mathematics Club . . . Pep Club . . . Music Appreciation Club . . . S & G

BAILEY, PHILLIP LEE . . . S & G . . . Gun Club . . . Music Appreciation Club



BAIZE, JAMES C . . . Gun Club . . . Pep Club . . . Evansville Astronomy Society . . . S & G . . . Cum Laude

BALL, JOHN JR . . . S & G . . . Cum Laude . . . Locker Service Club . . . Coin Club

BANKO, ELIZABETH FAYE . . . Cum Laude . . . S & G . . . Commencement Flower Girl . . . Jr, Sr Prom Com . . . GAA . . . Principal's office . . . School Spirit Ad Staff . . . Pep Club

BARGER, CAROL JEAN . . . Football Queen . . . Fr, Res, Varsity Cheerleader . . . Basketball Courts . . . Football Courts . . . Jr Prom Com Co-Chrm . . . Sr Picture Com . . . Soph Party Co-Chrm . . . Scholarship B

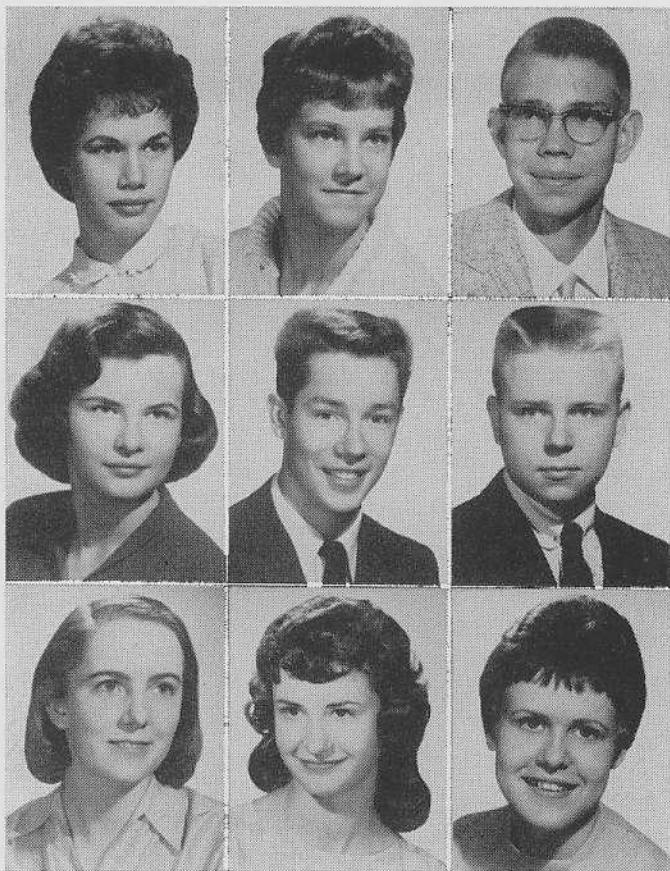
BARNETT, PHILLIP JOHN . . . Quill & Scroll . . . S & G . . . School Spirit Ad Staff . . . School Spirit Circulation Mgr . . . Locker Club Pres . . . Slide Rule Club

BARNETT, SANDRA KATHERINE . . . School Spirit News Editor . . . Quill & Scroll . . . Thespians . . . Concert Choir . . . Student Council . . . Pep Club . . . S & G . . . Scholarship B . . . NHS

BATEMAN, RONALD EUGENE . . . Movie Operator . . . Camera Club . . . Music Appreciation Club . . . S & G

BAUER, DIANNA GAYLE . . . Scholarship B . . . Jr Prom Court . . . Seventeen Club Program Chrm . . . S & G . . . Cum Laude . . . Music Appreciation Club

BEADLE, RAYMOND JR . . . Cum Laude . . . S & G . . . Scholarship B . . . All Season Sports Club . . . Gun Club . . . Coin Club



BELL, GLORIA JEAN . . . Cheerleaders Club . . . Modeling Club . . . Seventeen Club . . . S & G
BELL, NANCY KAREN . . . Cum Laude . . . S & G . . . Seventeen Club . . . Cheerleaders Club . . . FTA . . . GAA . . . Gym Leader
BENNINGFIELD, WILLIAM CARTER . . . School Spirit Make-up Staff . . . Coin Club . . . Transportation Club . . . Business Club . . . Photography Club . . . Sr Edition Make-up Staff

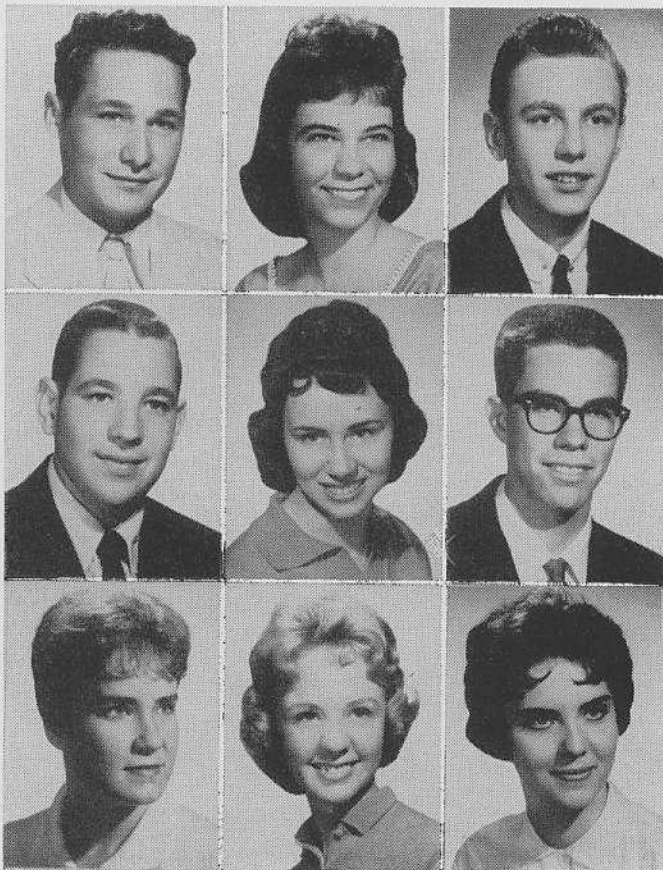
BENTLEY, SANDRA SUE . . . S & G . . . Cum Laude . . . Library Ass't . . . Pep Club . . . Sr Prom Com . . . Y-Teens . . . Etiquette Club
BERGMAN, NEIL EDWARD . . . Jr Prom Com . . . S & G . . . Chess Club . . . Science Club . . . Sr Prom Com
BIGGS, DENNIS EUGENE . . . Sr Talent Day Co-Chrm . . . Concert Choir Veep . . . Christmas Production Soloist . . . Thespians . . . Operettas . . . Senior Quartet . . . S & G . . . Cum Laude

BLACK, MEREDITH ANNE . . . NHS . . . Science Club . . . Magna Cum Laude . . . S & G . . . Jr Prom Com . . . Monitor
BLACKBURN, SANDRA KAY . . . Seventeen Club . . . Modeling Club . . . Etiquette Club . . . S & G
BLACKBURN, WANDA SUE . . . Jr Red Cross Club . . . S & G

BLAIR, CLARENCE REE . . . Cross Country . . . Track . . . Chorus . . . Movie Operators Club Sec, Veep . . . Transportation Club . . . Gun Club
BLALOCK, MARGARET ANN . . . Cum Laude . . . S & G . . . Pep Club . . . Modeling Club Pres . . . Music Appreciation Club . . . Seventeen Club Program Com . . . Sr Invitation Com
BOARDMAN, MICHAEL . . . All Season Sports Club . . . Esquire Club Pres . . . Intramural Basketball . . . S & G

BOLERJACK, JAMES WAYNE . . . Transportation Club . . . Esquire Club . . . S & G . . . Print Shop Foreman . . . Audio-Visual Club
BONE, GLENDA LEE . . . Christian Service Club Veep . . . Student Council . . . Fr, Jr, Talent Days . . . Monitor . . . Kiwanis Guide . . . Scholarship B . . . Athletic Office
BRACHER, DONALD ARMIN . . . Audio-Club Pres . . . School Spirit Make-up Staff . . . Sr, Jr Talent Days . . . Thespians

BRADLEY, JUDITH ANN . . . S & G . . . Student Council . . . All City Safety Council . . . Dean's Ass't . . . Sr Prom Com Chrm . . . Seventeen Club . . . Fr, Jr, Sr Talent Days . . . GAA
BRANAMAN, LINDA LEE . . . Sr Class Veep . . . Junior Prom Queen . . . School Spirit Managing Editor . . . Student Council . . . Jr, Sr Prom Com . . . Quill & Scroll . . . Scholarship B . . . NHS
BREECE, ROSEMARY . . . Etiquette Club . . . Modeling Club . . . Christian Service Club . . . Seventeen Club . . . S & G . . . Cum Laude



BROCK,
Quill & S
Magna C
tion Com
BROWN,
. . . Fr,
. . . Jr Pr
. . . Copa
BROWN,
ball . . .
Basketbal

BROWN,
Teens . . .
Cum Lau
BROWN,
. . . S &
BULLOC
Prin Offic
Red Cros
Laude

BURGES
Transport
S & G
BURKE,
S & G . . .
matics Cl
BURTON
Choir . . .
. . . Jr, Sr
tion Day



BROCK, SANDRA KAY . . . School Spirit Editor . . . Quill & Scroll . . . Thespians . . . Concert Choir . . . Magna Cum Laude . . . Scholarship B . . . Sr Invitation Com . . . S & G . . . NHS

BROWN, BARBARA ANN . . . Majorette Co-Captain . . . Fr, Jr, Sr Talent Days . . . Twirling Club Veep . . . Jr Prom Com . . . S & G . . . Magna Cum Laude . . . Copaca-Band-A Com . . . Pep Club . . . NHS

BROWN, EDDIE RAY . . . Fr, Res, Varsity Basketball . . . Fr Track . . . S & G . . . Cum Laude . . . Basketball Club



BROWN, SHARON KAY . . . Athletic Office . . . Y-Teens . . . DE Club Parliamentarian . . . S & G . . . Cum Laude . . . Vocational Play . . . Movie Operator

BROWN, WILLIAM EDWARD . . . Cum Laude . . . S & G . . . All Season Sports Club

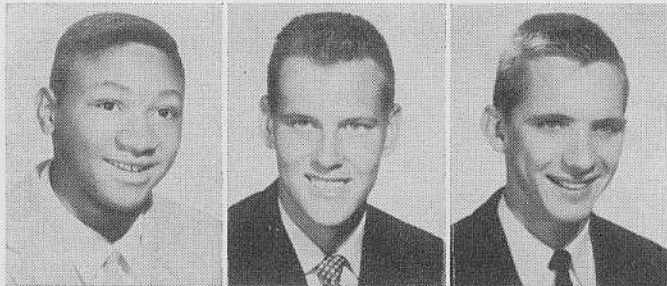
BULLOCK, MYRNA CAROL . . . S & G . . . Ass't Prin Office . . . Y-Teens . . . Etiquette Club . . . Jr Red Cross . . . Music Appreciation Club . . . Cum Laude



BURGESS, STEVEN FLOYD . . . Gun Club . . . Transportation Club . . . Audio-Visual Operator . . . S & G

BURKE, PETER EDWARD . . . Cum Laude . . . S & G . . . Scholarship B . . . Res Football . . . Mathematics Club . . . Music Appreciation Club

BURTON, LAUREL A . . . Thespians . . . Concert Choir . . . Thespian Veep . . . Magna Cum Laude . . . Jr, Sr Talent Days . . . Optimist Youth Appreciation Day . . . S & G . . . NHS



BUSHROD, BOBBY . . . FTA . . . Cum Laude
CAMPBELL, MICHAEL . . . Locker Club
CANDLER, PAUL THOMAS . . . Esquire Club



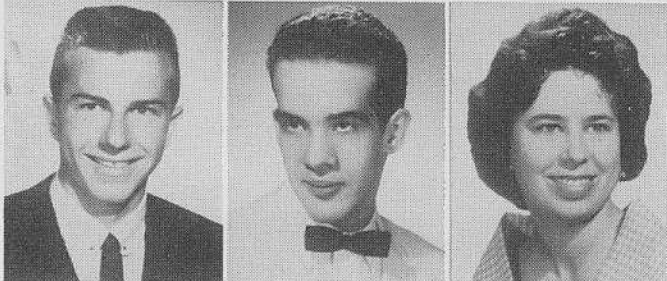
CANNON, MICHAEL EUGENE . . . Concert Choir . . . Honor Thespian . . . Thespian Pres . . . Cheerleaders Club . . . S & G . . . Fr, Jr, Sr Talent Days . . . Senior Quartet
CARMACK, ALAN GRANT . . . Cum Laude . . . Varsity Football . . . S & G . . . Intramural Basketball . . . Fr Track . . . Varsity Golf . . . Football Club
CARTER, VIRGINIA JUNE . . . Thespians . . . Scholarship B . . . Cum Laude . . . S & G . . . Pep Club . . . Jr, Sr Prom Com . . . Science Club . . . Commencement Usher



CATES, LARRY WAYNE . . . Chess Club . . . Gun Club . . . S & G
CHUMLEY, ELDA GAIL . . . Etiquette Club . . . Seventeen Club . . . Cum Laude . . . S & G
CLAYMAN, BETTY SUE . . . Magna Cum Laude . . . Scholarship B . . . Concert Choir . . . Student Council . . . Christian Service Club Treas . . . Fr, Sr Talent Days . . . S & G . . . Pep Club . . . NHS



CLIPPINGER, ANN C . . . Basketball Queen . . . Fr, Res, Varsity Cheerleader . . . Quill & Scroll . . . S & G . . . Scholarship B . . . Commencement Flower Girl . . . Fr, Jr, Sr Talent Days . . . Sr Prom Com
CLIPPINGER, SARA COWLE . . . Fr, Res, Varsity Cheerleader . . . Sr Class Sec . . . Basketball Court . . . Scholarship B . . . Sr Prom Court . . . Quill & Scroll . . . Fr, Jr, Sr Talent Days . . . Concert Choir
COFFEY, THOMAS JOE . . . Hi-Y Club . . . Transportation Club . . . S & G . . . Audio Visual Club . . . Freshman Assemblies

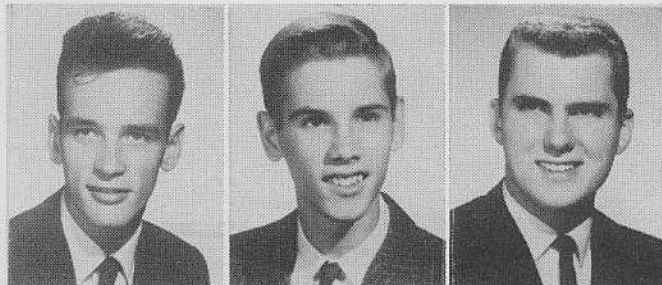


COLEMAN, RALPH EDWARD . . . Sr Class Pres . . . NHS Veep . . . Jr Class Veep . . . Basketball Club . . . Res, Varsity Basketball . . . Res, Varsity Track . . . S & G . . . Scholarship B . . . Magna Cum Laude
COOK, LEWIS F . . . Hi-Y Club . . . Bowling Congress . . . Transportation Club . . . Gun Club . . . Music Appreciation Club
COOPER, CAROL ANN . . . Jr Red Cross . . . Handicraft Club . . . S & G



COPELAND, JOYCE KAY . . . Etiquette Club Veep . . . Commencement Usher . . . Nurse's Ass't . . . Kiwanis Guide . . . S & G . . . Seventeen Club . . . Cum Laude
CRADDOCK, SONDRA KAY . . . Student Council . . . Marching Band . . . Scholarship B . . . Orchestra . . . Cum Laude . . . Etiquette Club . . . All City Band & Orchestra . . . Modeling Club . . . NHS
CRAIG, JUDY . . . Modeling Club . . . S & G . . . Christian Service Club . . . Etiquette Club . . . Jr, Sr Prom Courts . . . Transfer from North

CRAWFORD, EARL FLOYD . . . Transportation Club Pres . . . Fr Football . . . Music Appreciation Club . . . Intramural Basketball . . . S & G
CRUM, STEPHEN EDWARD . . . All Season Sports Club . . . Res Baseball . . . Pep Club . . . Baseball Mgr
DANNHEISER, CHARLES C . . . Fr, Res, Varsity Football . . . Fr, Res, Varsity Basketball . . . S & G . . . Cum Laude . . . Football Club



DAUGHERTY, JOYCE LEA . . . Fr, Jr Talent Days . . . Cum Laude . . . GAA . . . Modeling Club . . . Etiquette Club . . . Dean's Ass't
DAVIS, BEVERLEY JEAN . . . Scholarship B . . . Cum Laude . . . S & G . . . Pep Club . . . Commencement Flower Girl . . . Dean's Ass't . . . Jr Red Cross Club . . . Jr Prom Committee
DAVIS, CHARLES RAY . . . S & G . . . Coin Club



DEER, LINDA DEAN . . . Pep Club . . . S & G . . . Magna Cum Laude . . . National Merit Finalist . . . Scholarship B . . . School Spirit Editorial Staff . . . Algebra Contest . . . Geometry Contest . . . NHS
DEFFENDAHL, JULIA ELLEN . . . Jr Prom Com . . . Pep Club Com . . . Christian Service Club Pres . . . Modeling Club Program Chrm . . . Sr Picture Com . . . Chess Club . . . Ass't Prin Office . . . Magna Cum Laude . . . NHS
DENTON, LARRY NEIL . . . S & G . . . Pep Club . . . Fr, Res, Varsity Basketball . . . Fr Football . . . Fr, Varsity Track . . . Basketball Club . . . Cum Laude . . . Sr Prom Com



DIKE,
 Pep Cl
 Modelin
DIMM
 Pep Cl
 . . . Nu
DIXON
 Golf . .
 . . . Cu

DOOM
 . . . Nu
GAA
DORR
DORR
 Cum L
 Club .
DUNC
 . . . Q
 Preside
 S & G
 Sr Edit

DUNN
 Club H
 Etiquet
DUNVI
 Varsity
 Club V
DUNVI
 Club .
 Twirling



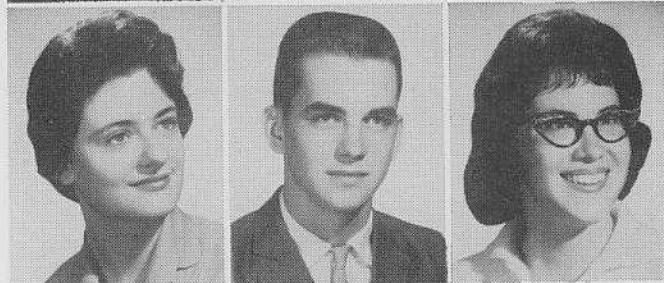
DIKE, MYRA JEAN . . . S & G . . . Cum Laude . . .
 Pep Club . . . Y-Teen Tres . . . Nurse's Ass't . . .
 Modeling Club
DIMMETT, JANET SUE . . . S & G . . . Cum Laude
 Pep Club . . . Cap & Gown Com . . . Invitation Com
 . . . Nurse's Ass't . . . Modeling Club . . . Y-Teens
DIXON, WILLIAM C Fr, Res Football . . . Varsity
 Golf . . . Pep Club Pres . . . Sr Prom Com . . . S & G
 . . . Cum Laude . . . Sr Talent Day



DOOM, SHARON D . . . Orchestra . . . Gym Leader
 . . . Nurse's Office . . . Music Appreciation Club . . .
 GAA

DORROUGH, WALTER RICHARD . . . S & G . . .
 Cum Laude . . . Pep Club . . . Music Appreciation
 Club . . . Chess Club

DUNCAN, MARTHA ELAINE . . . Student Council
 . . . Quill & Scroll . . . Thespians . . . Soph Class
 President . . . Pep Club . . . Concert Choir . . .
 S & G . . . Sr Prom Com . . . School Spirit Editorial,
 Sr Edition Staffs . . . Sr Talent Day



DUNNING, PATSY . . . S & G . . . Pep Club . . . DE
 Club Historian . . . Modeling Club . . . Y-Teens . . .
 Etiquette Club

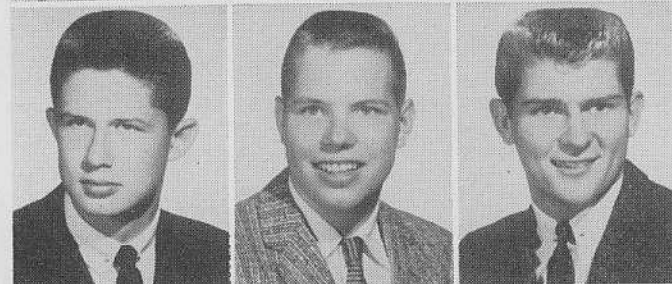
DUNVILLE, WILBUR DEAN . . . S & G . . . Fr,
 Varsity Track . . . Coin Club Pres, Veep . . . DE
 Club Veep . . . All Season Sports Club

DUNVILLE, WILMA JEAN . . . S & G . . . DE
 Club . . . Modeling Club . . . Seventeen Club . . .
 Twirling Club



DURBIN, WANDA MAE . . . Seventeen Club
DUTTON, CHARLOTTE RAE . . . Cheerleaders
 Club . . . Red Cross . . . Music Appreciation Club
 . . . Etiquette Club . . . Cum Laude . . . S & G . . .
 Y-Teens . . . GAA

EBERHART, CAROLYN LOUISE . . . Pep Club . . .
 S & G . . . GAA . . . Commencement Usher . . .
 Seventeen Club . . . Modeling Club . . . Ass't Prin
 Office . . . Soph Party Com



EDMONSON, WAYNE STEVEN . . . NHS Tres . . .
 Fr Class Veep . . . Jr Class Tres . . . Sr Prom Co-
 Chrm . . . Varsity Baseball . . . S & G . . . Magna
 Cum Laude . . . Scholarship B . . . Sr Talent Day

ELLERBROOK, DANIEL OLIVER . . . Cum Laude
 . . . S & G . . . Marching Band . . . All-City Band
 . . . FTA . . . Chess Club . . . Slide Rule Club . . .
 Thespians

ELLISON, DAVID LEE . . . All Season Sports Club
 . . . S & G . . . Intramural Basketball . . . Transporta-
 tion Club . . . Varsity Football



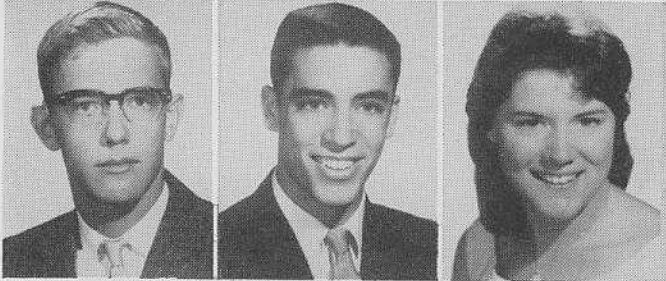
ENGLISH, DAVID C . . . All Season Sports Club
 . . . S & G . . . Transportation Club . . . Pep Club
 . . . Jr Prom Com

EULER, MICHAEL WAYNE . . . Audio-Visual Club
 Pres . . . Photography Club . . . S & G

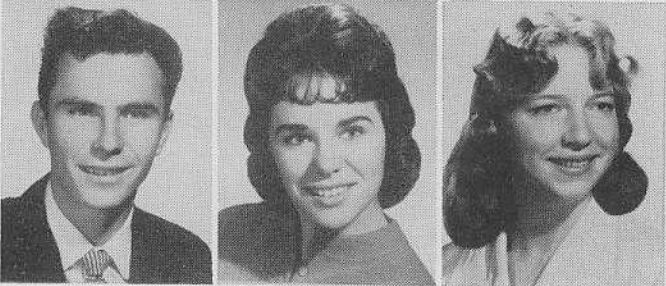
FALLETTI, JANE ANTONETTE . . . Student Coun-
 cil . . . S & G . . . Pep Club . . . Jr, Sr Prom Com
 . . . Thespians . . . Bridge Club . . . Y-Teens . . .
 Easter, Christmas Programs



FEHN, STEVE ALAN . . . Transfer from Memorial
FICKAS, ELIZABETH ANN . . . Concert Band . . .
 Sr Prom Com . . . Sr Picture Com Chrm . . . S & G
 . . . Cum Laude . . . Music Appreciation Club . . .
 Ass't Prin Office . . . Band Adjutant
FINE, ROSALIND . . . Thespian Sec . . . Student
 Council . . . School Spirit News Editor . . . Soph,
 Jr, Sr Prom Com . . . Jr, Sr Talent Days . . . S & G



FISHER, ROGER . . . S & G . . . Cum Laude . . .
 Transportation Club . . . All Season Sports Club
FORMAN, JAMES FREDERICK . . . S & G . . .
 Cum Laude . . . Cross Country . . . Physics Club
 . . . Varsity Track
FOSTER, MARGUERITE PEARL . . . S & G . . .
 Golf Club . . . Etiquette Club . . . Nurse's Office



FOSTER, ROLAND BRYAN . . . Pep Club
FOSTER, VICTORIA JAYNE . . . NHS . . . S & G
 . . . Scholarship B . . . Fr, Res, Varsity Cheerleader
 . . . Football Queen . . . Fr Class Pres . . . Concert
 Choir Sec . . . Jr, Sr Prom Com
FOSTER, WANDA LEE . . . S & G . . . Music Appre-
 ciation Club . . . Etiquette Club . . . Y-Teens

FRANK, EDWARD JAMES . . . Varsity Football . . .
 Varsity Track . . . Intramural Basketball . . . S & G
 . . . Football Club . . . Monitor
FRASER, STEVE WAYNE . . . Fr Football . . . S &
 G . . . All Season Sports Club . . . Transportation
 Club . . . Intramural Basketball
FREEMAN, NICHOLAS . . . Pep Club Veep . . .
 School Spirit Managing Ed . . . Sr Edition Staff . . .
 Quill & Scroll . . . Band . . . Intramural Basketball
 . . . Scholarship B . . . S & G

FRESON, MARVIN LOUIS . . . NHS . . . Quill &
 Scroll . . . Varsity Track, Cross Country . . . Student
 Council . . . Jr, Sr Prom Com Co-Chrm . . . School
 Spirit Editorial Staff . . . Scholarship B . . . Intra-
 mural Basketball
FUHRER, KIAH ANTHONY . . . Varsity Track . . .
 All Season Sports Club Veep . . . Thespian . . . S & G
 . . . Mock Convention Rules Com . . . Pep Club
GAISSER, JOHN WILLIAM . . . S & G . . . Scholar-
 ship B . . . Res Basketball . . . Magna Cum Laude
 . . . Cum Laude . . . Student Council . . . NHS

GAUER, JOHN DOUGLAS . . . Golf . . . S & G
 . . . Locker Club . . . Cum Laude . . . Intramural
 Track
GAUNTT, MARSHA GAYLE . . . NHS . . . Thes-
 pians . . . Scholarship B . . . S & G . . . Student
 Council . . . Pep Club . . . Sr Talent Day Co-Chrm
 . . . Fr Class Sec
GEHLHAUSEN, JOHN DRESS . . . S & G . . . All
 Season Sports Club . . . Coronation Com . . . Cum
 Laude



GENTR
 Music A
 . . . Pep
GETZ, M
 . . . Sch
 Club . .
 Talent D
GILHAM
 . . . Bask
 . . . DE

GILMO
 Laude .
 B . . . B
 Club . .
GISH, D
 Club . .
 ment Flo
GISH, T
 S & G . .
 Club . .

OWDY
 . . . Sch
 Pep Club
 Concert
 Talent D
GRAVES
 . . . Foot
 Commen
 Laude .
GRAY, S
 Pres . . .
 tion . . .



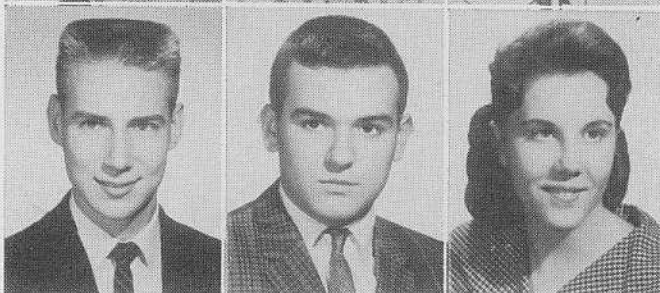
GENTRY, PATRICIA LEA . . . Etiquette Club . . . Music Appreciation Club . . . S & G . . . Cum Laude . . . Pep Club . . . Library Ass't . . . Treasurer's Ass't
GETZ, NANCY VAL . . . Cum Laude . . . S & G . . . School Spirit Editorial Staff . . . Cheerleader's Club . . . Soph Party Com . . . Jr. Prom Com . . . Jr Talent Day Com . . . Pep Club
GILHAM, WILLIAM ROBERT . . . Basketball Club . . . Basketball Mgr . . . Fr, Soph Baseball . . . S & G . . . DE Club



GILMORE, JOAN ELIBABETH . . . Magna Cum Laude . . . Cum Laude . . . S & G . . . Scholarship B . . . Bridge Club Veep . . . Sr Prom Com . . . Pep Club . . . FTA Veep
GISH, DARLA FAY . . . Thespians . . . Seventeen Club . . . Scholarship B . . . S & G . . . Commencement Flower Girl . . . Jr Prom Com . . . Pep Club
GISH, THEODORE WARREN . . . Cum Laude . . . S & G . . . School Spirit Make-up Staff . . . Locker Club . . . All Season Sports Club



GOWDY, ROBERT LEWIS . . . Magna Cum Laude . . . Scholarship B . . . Eastern Tour Captain . . . Pep Club Com Co-Chrm . . . Senior Quartet . . . Concert Choir . . . Music Productions . . . Jr, Sr Talent Days . . . NHS
GRAVES, WILLIAM RUSSELL . . . Science Club . . . Football . . . Track . . . National Merit Letter of Commendation . . . Cum Laude . . . Magna Cum Laude . . . Scholarship B . . . S & G
GRAY, SANDRA PAULINE . . . Future Nurse's Club Pres . . . S & G . . . Pep Club . . . Christmas Production . . . Mixed Chorus



GREGORY, SHARON ANN . . . S & G . . . Seventeen Club . . . Etiquette Club . . . Fr Chorus . . . Thespian Productions . . . Jr Y-Teens . . . Modeling Club

HALLERT, MARC E . . . Student Council Com Co-Chrm . . . Scholarship B . . . Quill & Scroll . . . Pep Club . . . Sr Prom Com Co-Chrm . . . School Spirit Editorial, Sr Edition Staff . . . Indiana Governor's Youth Council

HAMPLEY, GERALD LEE . . . Football . . . Baseball . . . Football Club . . . Sr Invitation Com . . . Music Appreciation Club . . . S & G



HAMILTON, MARY FRANCES . . . Student Council . . . Thespians . . . Scholarship B . . . Band . . . Pep Club . . . Magna Cum Laude . . . National Merit Letter of Commendation . . . NHS

HAMMERS, NANCY JANE . . . Modeling Club . . . Etiquette Club . . . Seventeen Club . . . S & G . . . Fr Chorus

HANCOCK, ALVENIA RUTH . . . Etiquette Club Pres, Veep . . . Seventeen Club . . . S & G . . . Dean's Office . . . Cum Laude . . . Play Com



HANKINS, JOY LEE . . . Scholarship B . . . Cum Laude . . . Quill & Scroll . . . School Spirit Business Mgr . . . Student Council . . . Commencement Flower Girl . . . Coach's Office . . . Jr Prom Court

HARRIS, MARY ANGELA . . . Scholarship B . . . Cum Laude . . . School Spirit Editorial Staff . . . Sr Quill & Scroll . . . Commencement Flower Girl . . . Sr Invitation Com . . . Sr, Jr Prom Com . . . Thespian

HARRIS, WILLIAM DUANE . . . Student Council . . . Jr Class Council Sec . . . Scholarship B . . . S & G . . . Cum Laude . . . Music Appreciation Club . . . Jr Band



HART, DANIEL ARMIN . . . All Season Sports Club . . . S & G . . . School Spirit Make-up Staff
HARTLEY, BARBARA ANN . . . Youth Appreciation Day . . . Student Council . . . Majorette . . . Thespian . . . Jr Prom Com Co-Chrm . . . Norse's Office . . . Fr, Jr, Sr Talent Days . . . NHS
HASKINS, TOMMYE MAE . . . Etiquette Club . . . Sr Y-Teens . . . S & G

HAYES, CHARLES THOMAS . . . Chess Club . . . Music Appreciation Club . . . S & G . . . Bowling League

HEBEISEN, DAVID W . . . Coin Club . . . S & G . . . Intramural Basketball . . . Fr Basketball, Football, Baseball . . . Pep Club . . . All Season Sports Club . . . Transportation Club . . . Chess Club

HEERDINK, SONDR . . . S & G . . . Cum Laude . . . Etiquette Club . . . Pep Club . . . Y-Teens Sec . . . DE Club

HELM, DAVID A . . . Fr, Res Football . . . Fr, Res Golf . . . S & G . . . All Season Sports Club . . . Tennis . . . Etiquette Club

HENDRICKS, CHARLOTTE GAIL . . . Etiquette Club . . . Y-Teens Club . . . Travel Club . . . Library Ass't . . . S & G

HENRY, SARITA ANN . . . Jr Red Cross Club Pres Tres . . . GAA . . . Seventeen Club . . . Etiquette Club . . . S & G . . . Ass't Prin Office

HENRY, WARREN DAVID . . . Band . . . Cross Country . . . Science Club . . . Cum Laude . . . S & G

HENSLEY, JOHN CHARLES . . . Band Sergeant . . . Orchestra . . . Coin Club . . . Chess Club . . . Sigma Phi Delta . . . Dance Band . . . S & G . . . Pep Band

HERENDEEN, ROBERT O . . . Marching Band . . . Concert Band . . . Dance Band . . . Audio-Visual Club Veep . . . Amateur Radio Club . . . VFW Essay Contest . . . Sr Picture Com . . . Cum Laude

HESS, JERILYN LOUISE . . . Varsity Majorette . . . Twirling Club Pres . . . Jr Prom Co-Chrm . . . Christmas Pageant . . . Soph Class Veep . . . Thespian . . . Cum Laude . . . Scholarship B . . . NHS

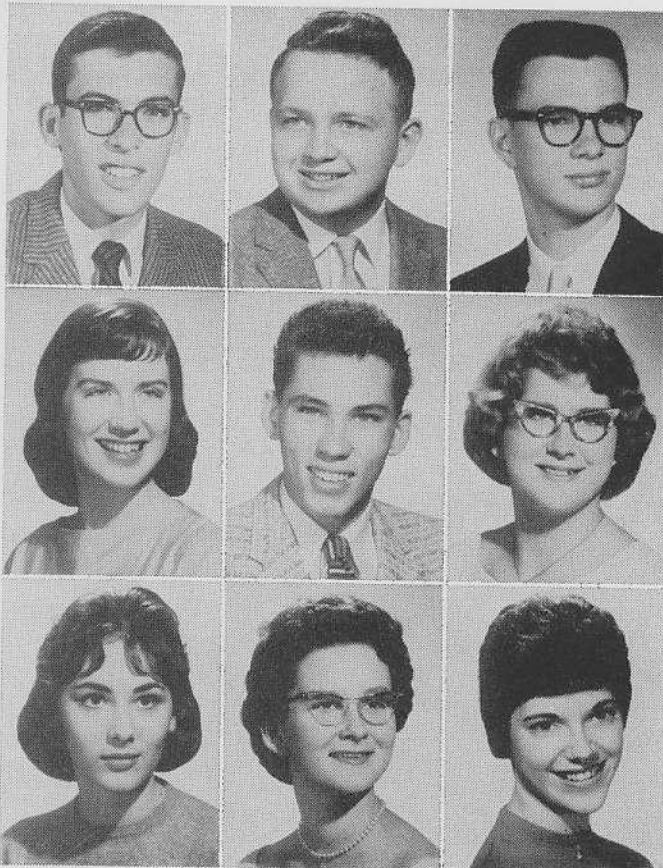
HOBBS, RICHARD ALLEN . . . Christian Service Club

HOFF, CAROL ANN . . . Invitation Com . . . FTA Pres . . . Etiquette Club . . . GAA Bowling . . . S & G . . . Cum Laude

HOFF, SARA ELIZABETH . . . Commencement Flower Girl . . . Seventeen Club . . . Pep Club . . . Youth Appreciation Week . . . Christmas Pageant . . . Jr, Sr Prom Com . . . Y-Teens . . . S & G

HOLCOMB, BONNIE JEAN . . . Future Nurse's Club . . . NHS at Bowling Green, Ky

HOLLAND, MARY ANN . . . S & G . . . Etiquette Club . . . Seventeen Club



HOLSA
Laude . . .
Handicr
HOOVE
Golf Clu
HOOVE
Seventee
. . . S &

HOOVE
Season S
ketball
HOPPEL
Veep . . .
Girl . . .
Prom Co
Club . . .

HOLTZ
ing Club
Class Re
S & G

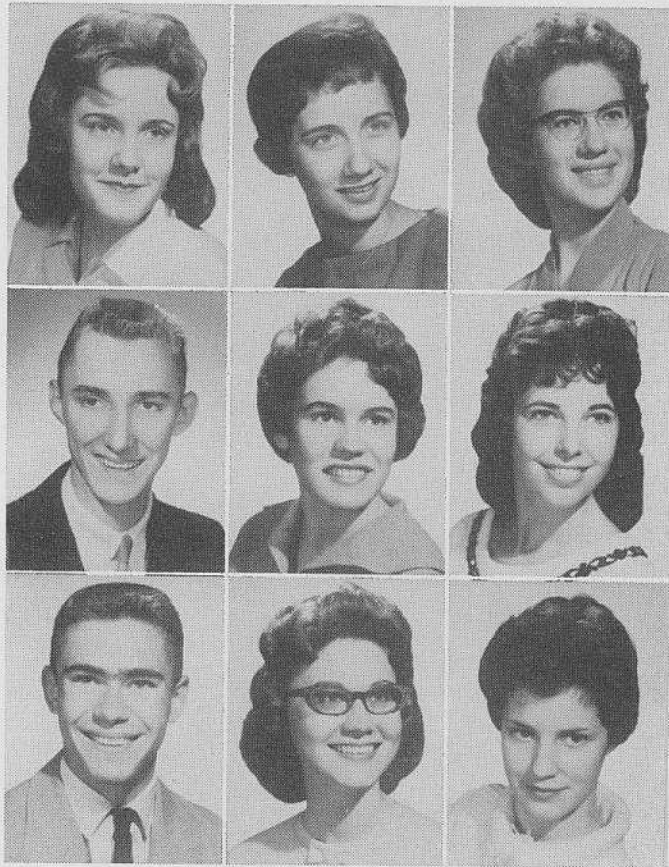
HUBEL
Track . . .
try . . .

. . . Okla
HUFNAC
Honor T
Club Ve
Jr, Sr Pr
HUGHES
Club . . .
. . . S &

HOLSAPPLE, MARCIA SUE . . . S & G . . . Cum Laude . . . Seventeen Club . . . Jr Red Cross . . . Handicraft Club
HOOVER, CAROL ANN . . . Etiquette Club . . . Golf Club . . . Seventeen Club . . . S & G
HOOVER, JANICE LEE . . . Handicraft Club . . . Seventeen Club . . . Nurse's Office . . . Jr Red Cross . . . S & G

HOOVER, JOHN WADE . . . Coin Club . . . All Season Sports Club . . . S & G . . . Intramural Basketball . . . Pep Club
HOPPER, LINDA HELEN . . . Concert Orchestra Veep . . . Soph Class Sec . . . Commencement Flower Girl . . . Scholarship B . . . Pep Club . . . Jr, Sr Prom Com . . . All-City Orchestra . . . Seventeen Club . . . NHS
HOLTZ, DIXIE DARLINE . . . DE Pres . . . Modeling Club . . . Etiquette Club . . . Jr Prom Com . . . Class Rep for Mock Democratic Convention . . . S & G

HUBELE, STEPHEN SCOTT . . . Fr, Res, Varsity Track . . . Cum Laude . . . S & G . . . Cross Country . . . Biology Club Sec . . . Concert Choir Tres . . . Oklahoma . . . Plain and Fancy . . . Pep Club
HUFNAGEL, BARBARA JOANNE . . . NHS . . . Honor Thespian . . . Magna Cum Laude . . . Math Club Veep . . . Concert Choir . . . Scholarship B . . . Jr, Sr Prom Com . . . State Math Contests
HUGHES, JUDITH ANN . . . GAA Sr Rep . . . DE Club . . . Y-Teens . . . Golf Club . . . Gym Leader . . . S & G



HULVERSHORN, JOHN KIP . . . Magna Cum Laude . . . School Spirit Editorial Staff . . . Sr Edition Staff . . . FTA Veep . . . S & G . . . Pep Club . . . All Season Sports Club
HUMPHREY, JERRY WAYNE . . . Varsity Football . . . Golf . . . Track . . . Football Club . . . S & G . . . Pep Club . . . All Season Sports Club
HUNTER, HARRIET FAY . . . Seventeen Club . . . Etiquette Club . . . Modeling Club . . . Golf Club . . . Music Appreciation Club . . . S & G . . . AV Office

HUSTON, CAROL FRANCES . . . Student Council Com Chrm . . . Quill & Scroll Veep . . . Pep Club Membership Com Co-Chrm . . . Advisory Board to Community Center . . . Fr, Sr Basketball Court . . . School Spirit Ad Manager . . . Cum Laude
HUTCHINS, BARBARA JEAN . . . GAA . . . Golf Club . . . Pep Club . . . Cum Laude . . . FTA . . . Music Appreciation Club . . . S & G . . . Handicraft Club
ICE, GARRY RAY . . . Gum Club . . . Transportation Club . . . S & G

IVEY, KAREN JEANETTE . . . Ass't Prin Office . . . Commencement Usher . . . Pep Club . . . Crews for Plays . . . Sr Prom Com . . . Bookstore Ass't
JAQUESS, VICKI LEE . . . Student Council Com Co-Chrm . . . Commencement Flower Girl . . . Jr Prom Com Co-Chrm . . . Sr Talent Day Com Chrm . . . Thespians . . . Scholarship B . . . Girls Club Council Rep . . . Dean's and Principal's Office
JEFFERS, GARY I . . . Esquire Club . . . Chess Club . . . S & G . . . Go-To-College Guide



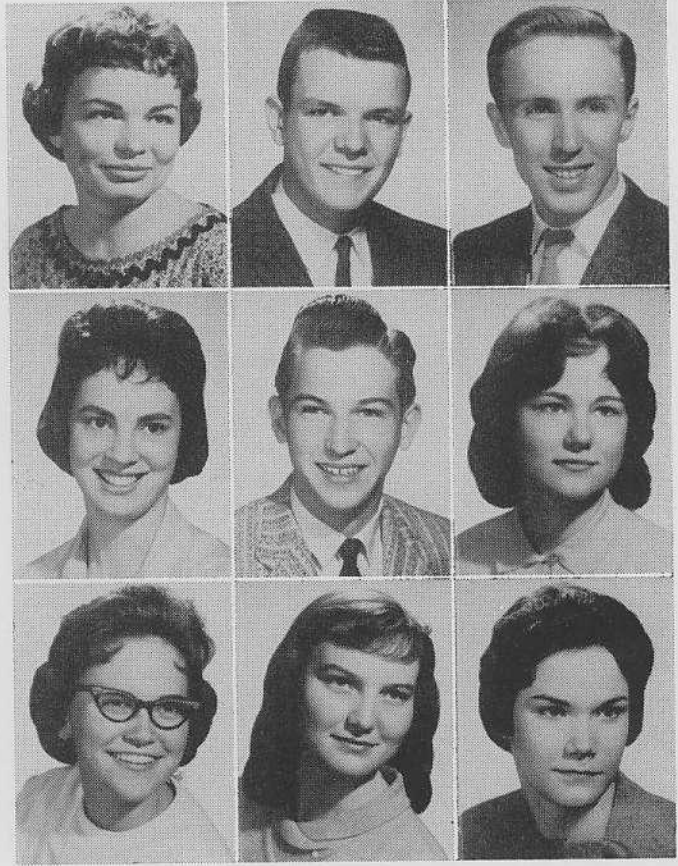
JENKINS, TOMMY JOE . . . Football Club . . . Music Appreciation Club . . . S & G . . . Monitor
JESSOP, ELIZABETH . . . Thespians . . . Paint Crew Chrm . . . Seventeen Club . . . Decoration Com for Copac-ca Band-a . . . Music Appreciation Club . . . S & G . . . Cum Laude
JETT, BARBARA SUE . . . Cum Laude . . . Guidance Office . . . Modeling Club . . . Etiquette Club . . . Usher for Sr Night . . . S & G . . . Bridge Club

JOHNSTON, BILLY
JOHNSTON, JERRY EUGENE . . . Music Appreciation Club . . . S & G
JOHNSON, KAREN KAY . . . Nurse's Office . . . Counselor's Office . . . Future Nurse's Club . . . Seventeen Club . . . Sr Prom Com . . . Sr Invitation Com . . . Scholarship B . . . Pep Club

JONES, ALAN ERIC . . . Concert Choir . . . Sr Talent Day . . . Scholarship B . . . Student Council . . . S & G . . . Cum Laude . . . Fr, Res Football . . . Operettas
JUDD, MICHAEL WARREN . . . Student Council Com Co-Shrm . . . Pep Club Com CoChrm . . . Sr Prom Com . . . Jr Talent Day Co-Chrm . . . Jr Prom Co-Chrm . . . Concert Choir Pres . . . NHS
KALKWARF, RUDOLPH ALTON . . . Gun Club . . . Chess Club . . . S & G

KEELING, SHIRLEY ANN . . . Pep Club . . . Nurse's Office . . . Thespians . . . Future Nurses Club . . . Music Appreciation Club . . . Christian Service Club Sec . . . Jr Talent Day Com
KEENAN, THOMAS DUWAYNE . . . S & G . . . First Lt of Band . . . Thespians . . . Concert Choir . . . Orchestra . . . Plain and Fancy . . . Oklahoma . . . The Lark
KEIL, ROBERT ALLEN . . . Student Council . . . S & G . . . Cum Laude . . . Magna Cum Laude . . . Scholarship B . . . Intramural Basketball . . . Student Council Monitor . . . Chess Club . . . All-Season Sports Club . . . NHS
KESSLER, FRANCES MARY . . . S & G . . . Cap and Gown Com . . . Pep Club . . . Seventeen Club . . . Etiquette Club . . . Modeling Club
KETTERMAN, KEITH ALLEN . . . Coin Club . . . Chess Club . . . Sigma Phi Delta . . . S & G
KINCAID, BOBBY JEAN . . . S & G . . . Etiquette Club . . . Seventeen Club . . . Y-Teens . . . Nurse's Office

KING, CAROLYN SUE . . . Concert Band . . . Concert Band . . . Concert Orchestra . . . Commencement Flower Girl . . . Prin Office . . . Flute Trio . . . S & G . . . Magna Cum Laude . . . Scholarship B
KING, DONNA R . . . S & G . . . Kiwanis Guide . . . GAA . . . Mock Convention Delegate . . . Etiquette Club . . . Christian Service Club Pres . . . Modeling Club Program Chrm . . . Seventeen Club
KING, JUDITH DELENE . . . S & G . . . Scholarship B . . . Cum Laude . . . Kiwanis Guide . . . Commencement Usher . . . Athletic Office Ass't . . . Jr Prom Com



KNOTE,
Seventeen
Cum Lau
Etiquette
KINNEY,
. . . Chris
ator . . .
KINKAD
Music Ap
The Lark

KUSHNE
Club . . .
Com . . .
ship B . . .
KOEWL
. . . Pep C
. . . Soph
KOCH, M
Com Co-
Track . . .
Scholarsh

LEBER,
enteen C
. . . Scho
LEACH,
Etiquette
Office . . .
. . . Mon
LANGSE
Laude . . .
Nurse's
Club . . .

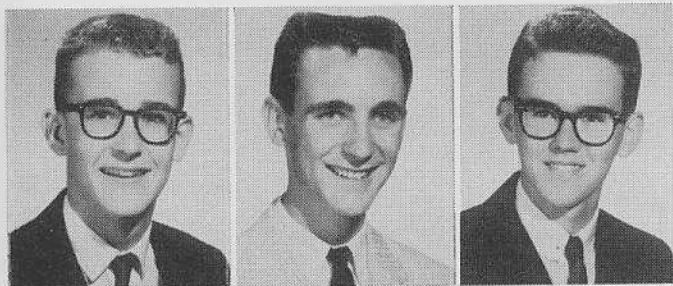
KNOTE, BARBARA ELAINE . . . Thespians . . .
 Seventeen Club . . . Sr Prom Com . . . S & G . . .
 Cum Laude . . . Pep Club . . . Concert Choir . . .
 Etiquette Club . . . Sr Talent Day
KINNEY, CHARON SUE . . . Audio-Visual Ass't
 . . . Christian Service Club Chrm . . . Movie Oper-
 ator . . . S & G . . . Cum Laude . . . GAA
KINKADE, KEITH EDMUND . . . Coin Club . . .
 Music Appreciation Club . . . Plain and Fancy . . .
 The Lark . . . Oklahoma . . . S & G



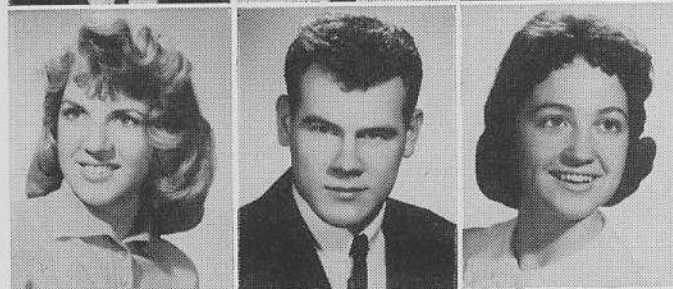
KUSHNER, SIDNEY RALPH . . . NHS . . . Science
 Club . . . Mock Political Convention . . . Sr Prom
 Com . . . Science Fair . . . Jr Prom Com . . . Scholar-
 ship B . . . Magna Cum Laude
KOEHLER, JUDY ANN . . . S & G . . . Cum Laude
 . . . Pep Club . . . Seventeen Club . . . Athletic Office
 . . . Soph Party Com . . . Y-Teens
KOCH, MALCOLM GERALD . . . Student Council
 Com Co-Chrm . . . NHS . . . Thespians . . . Varsity
 Track . . . Varsity Football . . . Jr, Sr Prom Com . . .
 Scholarship B



LEBER, LINDA MAE . . . Etiquette Club . . . Sev-
 enteen Club . . . Cum Laude . . . Magna Cum Laude
 . . . Scholarship B . . . S & G . . . NHS
LEACH, SHARON ANN . . . Yell Leaders Club . . .
 Etiquette Club . . . Seventeen Club . . . Ass't Prin
 Office . . . Commencement Flower Girl . . . S & G
 . . . Monitor . . . Pep Club
LANGSDALE, JOYCE ANN . . . S & G . . . Cum
 Laude . . . Junior Chorus . . . Seventeen Club . . .
 Nurse's Office . . . Etiquette Club . . . Modeling
 Club . . . Y-Teens



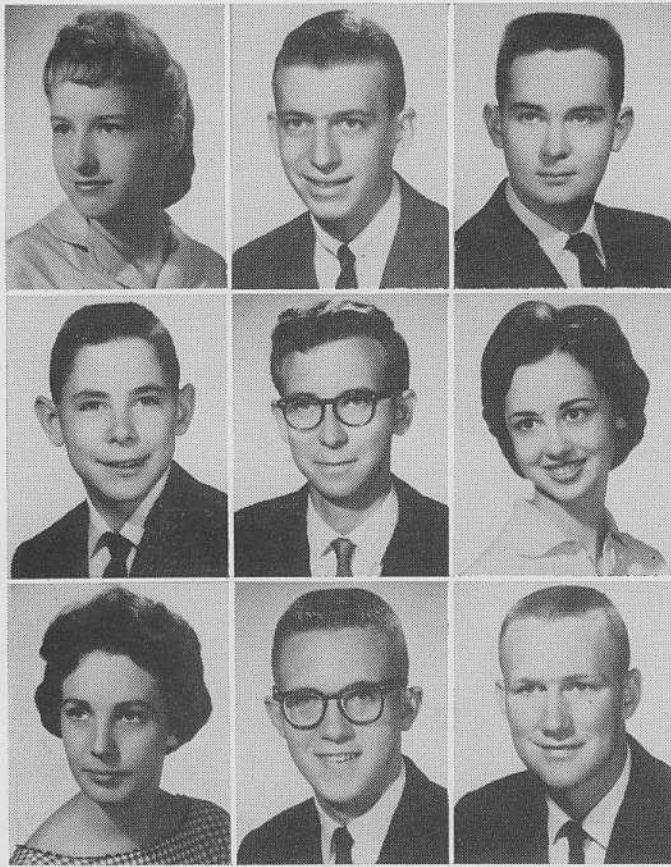
LETSINGER, CHARLES EDGAR II . . . Sound of
 Music . . . Oklahoma . . . Octet . . . Plain and Fancy
 . . . Brass Quartet . . . Concert Choir . . . Concert
 Orchestra . . . Concert Band
LEWIS, ALLEN MICHAEL . . . Sr Prom Com . . .
 Magna Cum Laude . . . Cum Laude . . . Concert
 Choir . . . Senior Quartet . . . S & G . . . Pep Club
 . . . Intramural Basketball
LIGGET, JOE CARY . . . All Season Sports Club . . .
 Plain and Fancy Crew . . . Cum Laude . . . S & G



LINDY, CAROL ELIZABETH . . . Monitor . . . Jr
 Prom Com . . . Etiquette Club . . . Seventeen Club
 . . . Pep Club . . . S & G
LLOYD, HEWLETT PICKENS . . . Fr, Res, Varsity
 Football . . . Football Captain . . . Fr, Res, Varsity
 Track . . . S & G
LOGSDON, SUSANN . . . Twirling Club . . . Model-
 ing Club . . . Seventeen Club . . . Etiquette Club . . .
 Invitation Com



LONG, PARLEY CARPER . . . Physical Science Club
 Veep . . . Audio-Visual Club Veep . . . Chess Club
 . . . Plain and Fancy Crew . . . Sr Talent Day Crew
 . . . S & G . . . Mixed Chorus
LOWERY, PHYLLIS ANN . . . NHS . . . Thespians
 . . . Quill & Scroll . . . Sr Prom Co-Chrm . . . Sr
 Talent Day Com . . . Jr Talent Day . . . Sr Edition
 Staff . . . School Spirit Staff . . . Student Council
LUDWIG, RONALD DUANE . . . Gun and Rod
 Club . . . Coin Club . . . Transportation Club . . .
 S & G . . . Counselor's Ass't



McCULLY, JOYCE ELLEN . . . Scholarship B . . . Cum Laude . . . Pep Club . . . S & G . . . Seventeen Club . . . Y-Teens . . . Etiquette Club . . . Music Appreciation Club
LUTZ, DANIEL . . . Transportation Club . . . S & G . . . Esquire Club . . . Cum Laude
LUIGS, JOSEPH KENNETH . . . Golf Team . . . Cum Laude . . . Pep Club . . . Intramural Basketball . . . S & G . . . Jr, Sr Prom Com . . . Certificate of Ed Development . . . Slide Rule Club

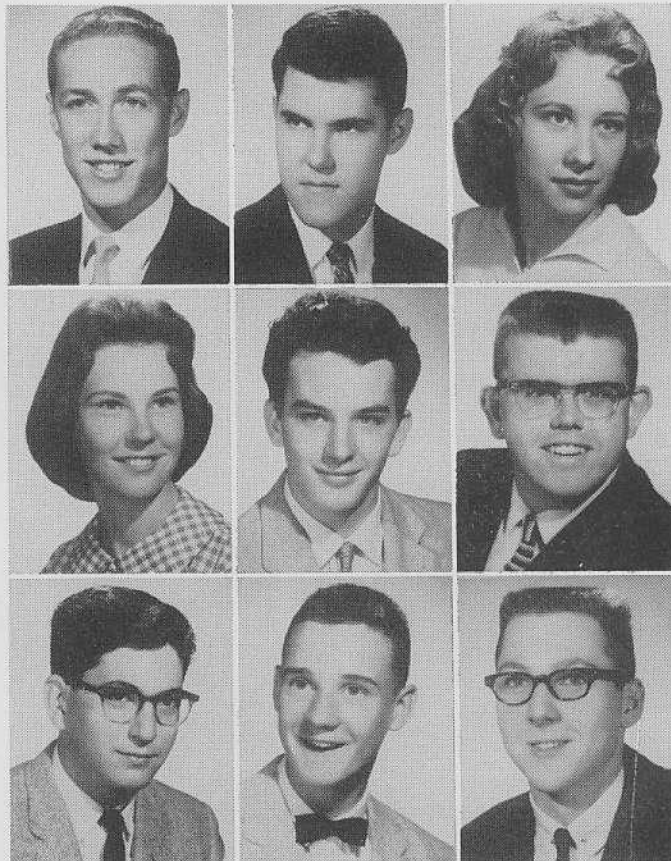
McMAHON, JACK MATTHEW . . . Coin Club . . . DE Club . . . S & G
McKENZIE, JACK RANDALL . . . Scholarship B . . . Cum Laude . . . Jr Prom Co-Chrm . . . Geometry Contest . . . Science Club . . . Thespians . . . S & G . . . Pep Club
McCULLOUGH, CAROLYN JEAN . . . Thespians . . . Sr Y-Teens Pres . . . Cum Laude . . . S & G . . . FTA . . . Pep Club . . . Jr, Sr Prom Com . . . Commencement Usher

MABREY, NANCY ELLEN . . . Pep Club . . . Seventeen Club . . . Modeling Club Sec . . . Fr Talent Day . . . S & G . . . Etiquette Club
McROY, ROBERT ERIC . . . School Spirit Editorial Staff . . . Cross Country . . . Sr Talent Day . . . Sr Prom Com . . . S & G . . . Magna Cum Laude . . . Intramural Basketball . . . Bowling
McNEELY, JOHN EDWIN . . . Student Council . . . Scholarship B . . . S & G . . . Science Club . . . Pep Club . . . Music Appreciation Club . . . Math Contest . . . Crews for Plays

MADDEN, CHARLES RAY . . . Drum Major . . . S & G . . . Pep Club
MANN, VERNON RAY . . . Varsity Football Mgr . . . Football Club . . . Varsity Track Mgr . . . S & G . . . Rod and Gun Club . . . Pep Club
MARKS, SANDRA RUTH . . . S & G . . . Cum Laude . . . Yell-Leaders Club . . . Etiquette Club . . . Seventeen Club . . . Fr Talent Day . . . Modeling Club . . . Monitor

MARSCH, AGNES FAY . . . Cum Laude . . . S & G . . . Bridge Club . . . Yell Leaders Club . . . Sr Prom Com . . . Fr Talent Day . . . School Spirit Ad Staff
MARTIN, HAROLD WAYNE . . . Gun and Rod Club . . . Coin Club . . . DE Club . . . All Season Sports Club . . . Chess Club
MARTZ, STEVEN LESLIE . . . Fr, Res Football . . . Bowling League . . . Bridge Club . . . S & G . . . Football Club

MARVER, JAMES MILTON . . . State Math Contest . . . Magna Cum Laude . . . Scholarship B . . . Student Council . . . Pep Club . . . Bridge Club . . . S & G . . . Jr Talent Day Com
MATHIAS, MICHAEL LEE . . . S & G . . . Cum Laude . . . Intramural Basketball . . . Pep Club . . . Fr Talent Day . . . Slide Rule Club . . . Transportation Club
MAYFIELD, JACK KENDALL . . . Football . . . Slide Rule Club . . . Science Club . . . Intramural Basketball . . . S & G . . . Cum Laude . . . Magna Cum Laude



MEDLIC
tra Sec . . .
Orchestra
Days . . .
MELTON
quette Cl
ting Club
MELVIN
. . . Quil
Cum Lau
Club . . .

MEYER,
. . . Intra
. . . Sr Pr
MICHAEL
tor . . .
Club . . .
MILES,
portation

MILLER
School Sp
Commenc

. . . Sr T
Club
MILLER
Varsity F
. . . Cum
Winner .
MILLER
. . . Sr P
Day . . .
. . . Mus

MEDLICOTT, PHYLLIS ANN . . . Concert Orchestra Sec . . . Commencement Flower Girl . . . All-City Orchestra . . . Scholarship B . . . Fr, Jr, Sr Talent Days . . . S & G . . . Pep Club
MELTON, JANE ANN . . . Library Ass't . . . Etiquette Club . . . Music Appreciation Club . . . Knitting Club . . . S & G . . . Cum Laude . . . Pep Club
MELVIN, DOUGLAS II . . . School Spirit Editor . . . Quill & Scroll . . . Intramural Basketball . . . Cum Laude . . . Transportation Club . . . Slide Rule Club . . . Scholarship B . . . Plain and Fancy



MEYER, JAMES WILLIAM . . . Varsity Baseball . . . Intramural Basketball . . . Cum Laude . . . S & G . . . Sr Prom Com . . . Esquire Club
MICHAEL, RUTH ADA . . . Radio Expression Director . . . Band . . . Y-Teens . . . Music Appreciation Club . . . Gym Leader . . . S & G . . . Speech Club
MILES, MORGAN ALAN . . . Cum Laude . . . Transportation Club . . . S & G



MILLER, CAROL DEANE . . . Thespian Clerk . . . School Spirit Editorial Staff . . . Quill & Scroll . . . Commencement Flower Girl . . . Sr Invitation Com . . . Sr Talent Day Com . . . Sr Prom Com . . . Pep Club
MILLER, FRED NICK . . . Varsity Football . . . Varsity Basketball . . . Varsity Baseball . . . S & G . . . Cum Laude . . . Voice of Democracy Contest Winner . . . Sr Prom Com . . . School Spirit Staff
MILLER, JUDITH KAY . . . S & G . . . Cum Laude . . . Sr Prom Com . . . Sr Prom Court . . . Fr Talent Day . . . Etiquette Club Sec . . . Modeling Club . . . Music Appreciation Club



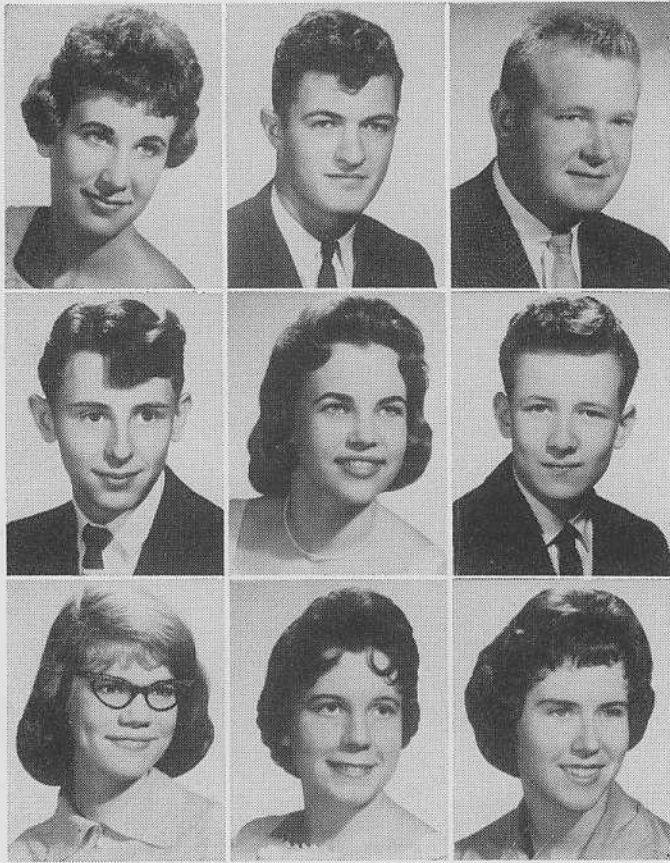
MILLER, LINDA SUE . . . S & G . . . Etiquette Club . . . Golf Club . . . Seventeen Club
MILLER, MARYELAINE . . . Jr Talent Day Com Chrm . . . Jr, Sr Prom Com . . . Pep Club . . . NHS Sec . . . Student Council Sec . . . Thespians . . . Jr, Sr Prom Courts . . . Scholarship B
MILLER, SUSAN MAY . . . S & G . . . Cum Laude . . . Etiquette Club . . . Golf Club . . . DE Tres



MILLS, ESTHER ELIZABETH . . . S & G . . . Cum Laude
MITCHELL, BETTY EVALYN . . . Scholarship B . . . S & G . . . Music Appreciation Club . . . Spanish Club . . . GAA . . . Life With Father . . . Golf Club . . . Dean's Office
MITCHELL, SHARON GAIL . . . Twirling Club . . . Etiquette Club . . . Monitor . . . Seventeen Club . . . Concert Choir . . . Cum Laude . . . S & G . . . January Graduate



MOLL, CYNTHIA BETTE . . . Co-Cpt of Majorettes . . . Varsity Majorette . . . Twirling Club Sec . . . Copa-ca-Banda Com . . . Play Com . . . Scholarship B . . . S & G . . . Sr Prom Com
MONTGOMERY, NANCY DORIS . . . S & G . . . Seventeen Club . . . Modeling Club . . . Etiquette Club . . . Nurse's Office
MOON, LELAND WILLS . . . Varsity Football Mgr . . . Varsity Track Mgr . . . Student Council . . . Cum Laude . . . S & G



MUSGRAVE, BARBARA SUE . . . DE Club . . .
Etiquette Club . . . S & G
NATION, ALFRED LYNN . . . Varsity Football . . .
. . . Locker Club . . . Football Club . . . S & G
NEIDERMEIER, THOMAS PAUL . . . Varsity Foot-
ball . . . Varsity Track . . . S & G . . . Cum Laude
. . . Jr, Sr Prom Com . . . Intramural Basketball . . .
Student Council . . . Youth Appreciation Week

NOFFSINGER, RAY HOWARD . . . Red Cross Club
. . . Gun Club . . . DE Club . . . Coin Club
NUSSMEYER, LINDA SUE . . . Band . . . Modeling
Club Sec . . . Seventeen Club . . . Etiquette Club
. . . Sr Prom Com . . . Pep Club . . . Scholarship B
. . . Cum Laude
O'BRIEN, PATRICK LARRY . . . Fr Track . . . DECA
. . . S & G . . . Chess Club . . . National Red Cross
. . . DECA National Convention

OTLOE, LINDA ANN . . . GAA . . . Music Appre-
ciation Club . . . S & G . . . Etiquette Club . . .
Seventeen Club
OVERTON, JUDITH CLAIRE . . . Cap and Gown
Com Chrm . . . GAA Pres . . . Cum Laude . . . S & G
. . . Pep Club . . . Jr, Sr Talent Days Com . . . Gym
Leader . . . Modeling Club
PALMER, JUDITH GAYLE . . . Sr Edition Co-Ed
. . . Quill & Scroll Sec . . . Thespians . . . Jr Talent
Day Com Chrm . . . Jr Prom Com . . . Commence-
ment Flower Girl

PARKHURST, PEGGY JUNE . . . Sr Y-Teens . . .
Jr Y-Teens . . . Monitor . . . Dean's Office . . . FTA
. . . Scholarship B . . . Concert Band . . . Cum Laude
Laude . . . NHS
PARTON, OWEN LEE . . . Pep Club . . . Modeling
Club . . . Y-Teens . . . Etiquette Club . . . Jr Prom
Com . . . Seventeen Club . . . Athletic Office Ass't
. . . Cum Laude
PATRICK, DIANA JUNE . . . Future Nurses of
America Veep . . . DE Club . . . Foreign Correspond-
ence Club . . . S & G

PEEK, GLORIA JEAN . . . Y-Teens . . . S & G . . .
Christian Science Club Tres . . . Monitor . . . Fr Tal-
ent Day . . . Kiwanis Vocational Guide
PERIGO, RONALD LEE . . . Fr Track . . . DECA
. . . All Season Sports Club . . . Esquire Club . . .
S & G
PERKINS, TOM

PFLUGER, CHARLOTTE FRANCES . . . Com-
mencement Flower Girl . . . Pep Club . . . Y-Teens
. . . Music Appreciation Club . . . Seventeen Club
. . . Jr Prom Com . . . Scholarship B . . . S & G
PHELPS, ANNE LOUISE . . . Seventeen Club . . .
Etiquette Club . . . Gym Leader . . . S & G
PIERCE, GILBERT EARL . . . Jr, Sr Prom Court
. . . Football Club . . . Fr, Res, Varsity Football . . .
Res, Varsity Baseball . . . S & G



POE, MA
Quill & S
Press Com
Usher . . .
POOLE,
Orchestra
menceme
Club . . .
PORTER
. . . Trans
. . . Band

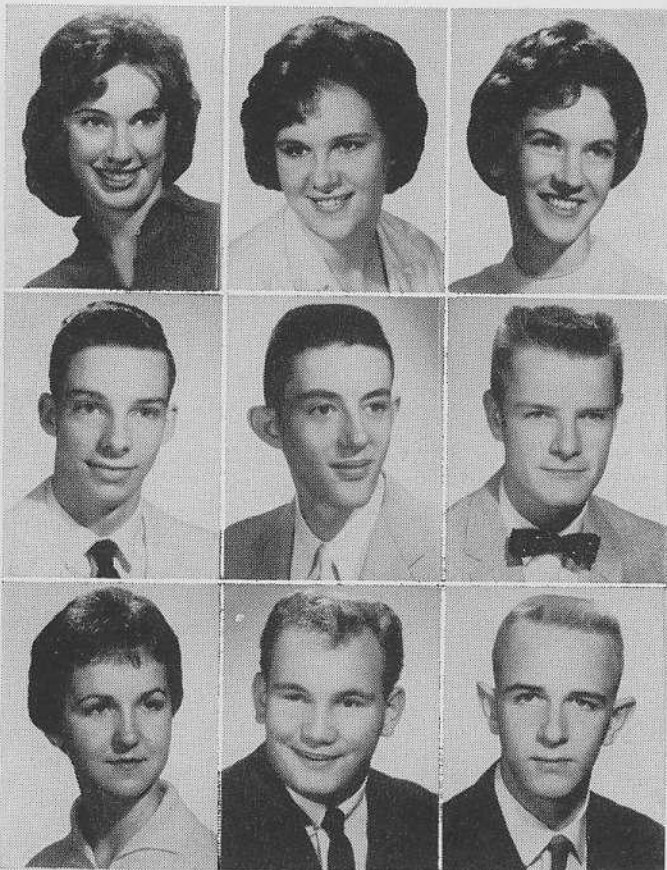
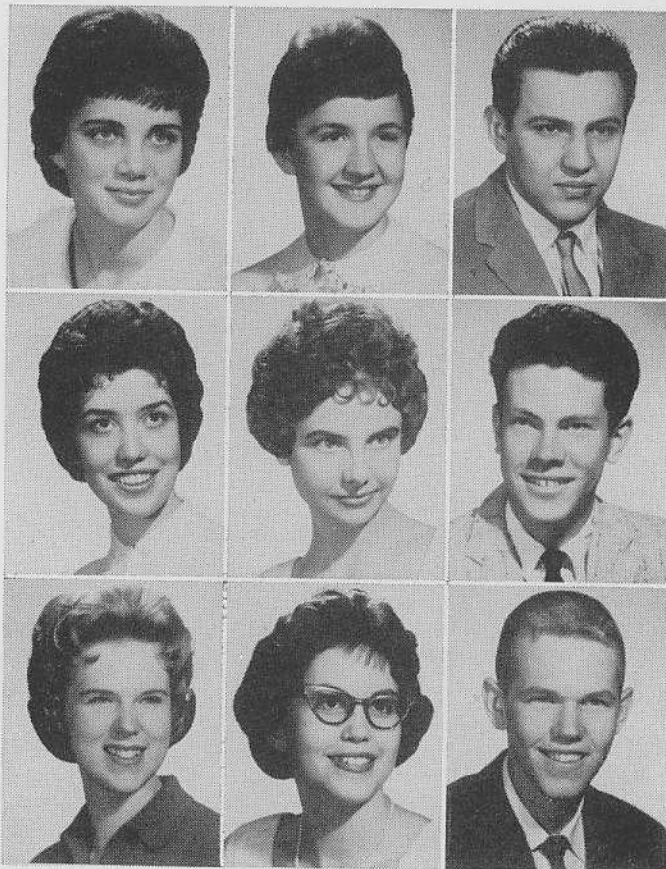
POSTLE
. . . DAB
Choir . . .
Club Sec
POWELL
Dean's O
B . . . Pe
Club . . .
PRESSLE
cil . . . S

PRIDE, I
dent Cou
. . . Pep
Staffs . . .
PRITCH
. . . Com
. . . Pep
ship B . . .
PRITCH
Football
. . . Foot
S & G

POE, MARY . . . Scholarship B . . . Thespians . . . Quill & Scroll . . . School Spirit Editorial Staff . . . Press Correspondent . . . S & G . . . Commencement Usher . . . Sr Invitation Com
POOLE, LINDA SUE . . . Concert Band . . . Concert Orchestra . . . S & G . . . Scholarship B . . . Commencement Flower Girl . . . Golf Club . . . Modeling Club . . . Etiquette Club
PORTER, JOHN . . . Football Club . . . Fr Track . . . Transportation Club . . . Res Football . . . S & G . . . Band . . . Intramural Track

POSTLETHWEIGHT, JOAN FAYE . . . Jr Class Sec . . . DAR Award . . . Student Council . . . Concert Choir . . . Thespians . . . Jr, Sr Prom Com . . . Pep Club Sec . . . Cum Laude . . . NHS
POWELL, JANET LANE . . . Sr Prom Com . . . Dean's Office . . . Magna Cum Laude . . . Scholarship B . . . Pep Club . . . Modeling Club . . . Seventeen Club . . . S & G
PRESSLEY, HOMER WINFREY . . . Student Council . . . S & G

PRIDE, PAMELA JEAN . . . Quill & Scroll . . . Student Council . . . Thespians . . . Sr Prom Com Chrm . . . Pep Club . . . Sr Edition, School Spirit Editorial Staffs . . . Cub Edition Editor . . . NHS
PRITCHARD, ELIZABETH ANN . . . Nurse's Office . . . Commencement Usher . . . Sr Invitation Com . . . Pep Club . . . Magna Cum Laude . . . Scholarship B . . . S & G . . . Nurse's Club Pres . . . NHS
PRITCHETT, THORNTON ROBERT . . . Fr, Res Football . . . Fr Baseball . . . Intramural Basketball . . . Football Club . . . All Season Sports Club . . . S & G



PRUDEN, PATRICIA ANN . . . Student Council . . . Concert Choir . . . Scholarship B . . . Jr Talent Day . . . S & G . . . Plain and Fancy . . . Jr, Sr Prom Com . . . Knitting Club Veep

RAHM, SHAREN LEE . . . S & G . . . Seventeen Club . . . Etiquette Club . . . Handicraft Club

REDMON, JACQUELINE ANN . . . Soph Rep to Girls Club Council . . . Crew for Play . . . Prin Office . . . Nurse's Office . . . Modeling Club . . . Seventeen Club . . . Cum Laude . . . S & G

RENDER, LARRY JAMES . . . Scholarship B . . . Cum Laude . . . S & G . . . BETA Club . . . Key Club . . . Slide Rule Club

RICHARDS, MICHAEL ALAN . . . S & G . . . Movie Operator Club . . . Audio Operators Club . . . Audio-Visual Club Veep, Sec . . . Christmas Production . . . Pep Club . . . Jr, Sr Talent Days . . . The Lark

RICKARD, TERRY LEE . . . Fr Football . . . Chess Club . . . Transportation Club . . . S & G . . . DECA

RISH, CONSUELA KAY . . . Jr Prom Com . . . The Diary of Anne Frank . . . Ass't Prin Office . . . S & G . . . Cum Laude . . . Christian Service Club Sec . . . Music Appreciation Club

RITTER, JERRY WAYNE . . . Football Club . . . Fr, Res Football . . . S & G . . . Ass't Cub Coach

ROBERTSON, CHARLES WILLIAM JR . . . NHS . . . Student Council . . . Scholarship B . . . S & G . . . Magna Cum Laude . . . Pep Club . . . Science Club



ROBERTSON, RALPH WAYNE . . . Fr Track . . . Res Football . . . Intramural Basketball . . . Intramural Track . . . Football Club . . . All Season Sports Club . . . School Spirit Make-up Staff . . . S & G
ROBINSON, SYLVIA LEE . . . Jr Red Cross . . . Cheerleaders Club . . . Etiquette Club . . . Pep Club . . . S & G
ROBINSON, TORCHYE GAYE . . . Red Cross Club . . . Etiquette Club . . . Modeling Club . . . Cheerleaders Club . . . Handicraft Club

RODMAN, STEWART HENRY . . . Student Council . . . Football . . . Scholarship B . . . Magna Cum Laude . . . S & G . . . Track . . . Football Club
ROETTGER, DARRELL GENE . . . Track . . . Cross Country . . . Lettermen's Club . . . Slide Rule Club . . . S & G . . . Transfer from Mascoutah, Ill.
ROGERS, BETTY LOU . . . Fr Talent Day . . . Etiquette Club . . . Golf Club . . . S & G . . . DE Club

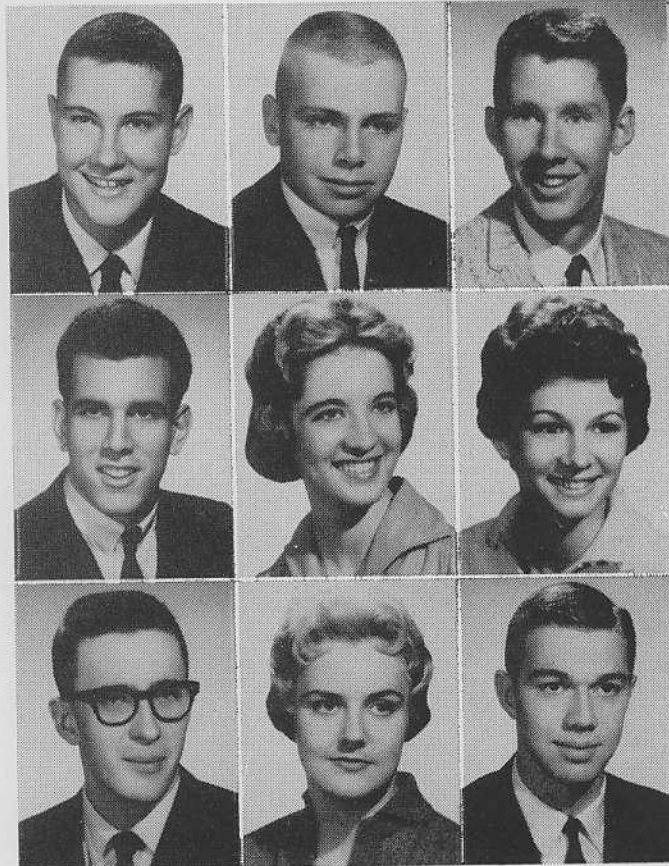
ROLL, JAMES DALE . . . Basketball Club . . . All Season Sports Club . . . Cum Laude . . . S & G
ROSENBLUM, LOIS ANN . . . Sr Invitation Com Tres . . . S & G . . . Cum Laude . . . Thespians . . . Concert Choir . . . Jr, Sr Talent Days . . . Jr, Sr Prom Com . . . Pep Club . . . NHS
ROTHERT, MARY KAY . . . Jr, Sr Talent Days . . . Cum Laude . . . S & G . . . Jr, Sr Prom Com . . . Concert Choir . . . Girls Club Council . . . Pep Club . . . Bridge Club . . . FTA Club

ROYSTER, ROBERT ALLYN . . . Varsity Golf . . . Science Club . . . Pep Club . . . Jr Prom Com Chrm . . . S & G . . . Cum Laude . . . Intramural Basketball

RUTHENBURG, JOHN . . . Cum Laude . . . S & G . . . Class Ring Com . . . Pep Club Assembly Com
RUTHERFORD, DENNIS LEE . . . Sr Prom Com Co-Chrm . . . Fr, Res, Varsity Basketball . . . Fr Football . . . Basketball Club . . . Fr, Varsity Track . . . Cross Country . . . S & G . . . Cum Laude

SABEL, ELLIOT . . . Esquire Club . . . S & G . . . Cum Laude . . . Transportation Club . . . Intramural Basketball . . . Fr Football . . . Intramural Track . . . Gun Club
SANDERS, CAROL SUE . . . Thespian Crews . . . S & G . . . Cum Laude . . . Sr Prom Com . . . Pep Club . . . Seventeen Club . . . Etiquette Club . . . Music Appreciation Club
SCHAUSS, TANYA . . . S & G . . . Seventeen Club . . . Etiquette Club . . . Cum Laude

SCHMIDT, STEPHEN LAWRENCE . . . DE Club . . . Camera Club
SCHMITT, CAROLYN DIANE . . . School Spirit Photographer . . . Quill & Scroll . . . Camera Club Pres . . . Student Council . . . Pep Club . . . Scholarship B . . . Magna Cum Laude . . . Commencement Flower Girl . . . NHS
SCHNACKE, STEPHEN BERNARD . . . Sr Edition . . . Scholarship B . . . Science Club Tres . . . Jr, Sr Co-Editor . . . Sr Talent Day . . . Fr, Res Basketball Prom Com . . . Pep Club Com Co-Chrm . . . NHS



SCHROEDER . . . Esquire Club . . . Sports Club . . .
SCHWENDE . . . Club . . . Sev . . .
SHANE, JAM . . . Jr Red C . . .
SHIREMAN, . . . Transportation . . .
SHUEL, RE . . . Student chestra . . . Cum Laude . . .
SIESKY, LA . . . Cross Count . . . FTA Pre arship B . . .
SIMMONS, . . . Etiquette Cl . . .
SINGLETON, . . . Etiquette Cl . . . Appreciation . . .
SLEIGHT, I . . . Veep . . . Et . . . Pep Cl . . .

SCHROEDER, FRED CLARENCE . . . S & G . . .
Esquire Club . . . Clabber Club . . . All Season
Sports Club . . . Bowling League . . . Pep Club

SCHWENDEL, BRENDA SUE . . . Future Nurses
Club . . . Seventeen Club . . . S & G

SHANE, JANIE LOU . . . Transfer from Chandler
. . . Jr Red Cross Veep . . . Seventeen Club

SHIREMAN, DAVE RICHARD . . . S & G . . .
Transportation Club

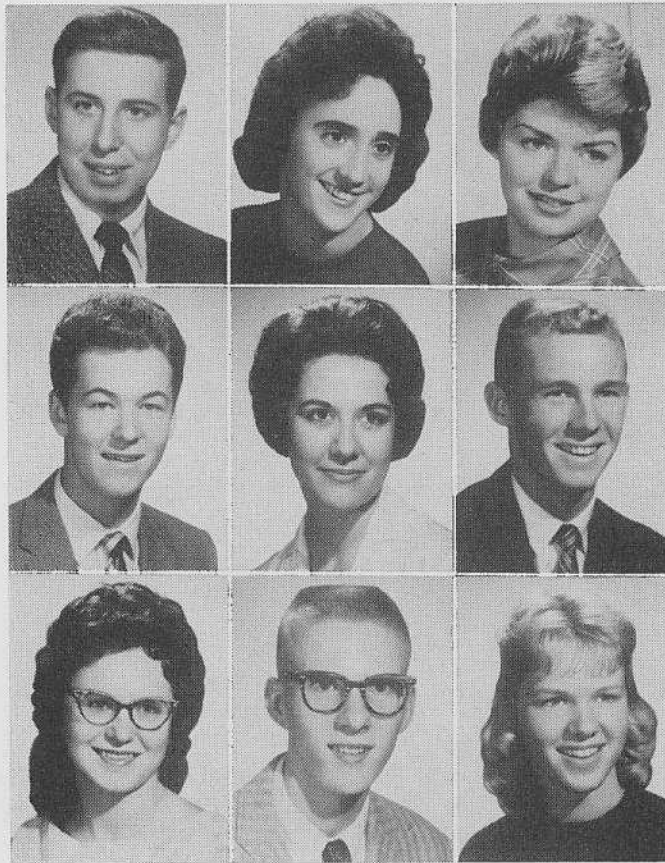
SHUEL, REBECCA WARRING . . . Fr Class Tres
. . . Student Council . . . Thespians . . . Concert Or-
chestra . . . Scholarship B . . . Jr, Sr Prom Com . . .
Cum Laude . . . S & G

SIESKY, LARRY LEE . . . Hoosier Boys State . . .
Cross Country, Varsity Track . . . Student Council
. . . FTA Pres . . . Cum Laude . . . S & G . . . Schol-
arship B

SIMMONS, JANET LOU . . . Red Cross Club . . .
Etiquette Club . . . Seventeen Club . . . S & G

SINGLETON, KENNETH LYLE . . . S & G . . .
Etiquette Club . . . Seventeen Club Veep . . . Music
Appreciation Club . . . Pep Club

SLEIGHT, ROSEMARIE . . . Seventeen Club Tres,
Veep . . . Etiquette Club . . . Cum Laude . . . S & G
. . . Pep Club . . . Music Appreciation Club



SMEATHERS, DONALD ALLAN . . . Transporta-
tion Club . . . Gun Club . . . Physical Science Club
. . . Bowling League . . . S & G . . . Pep Club . . .
Sr Prom, Soph Party Com

SMIDY, CARROLL JOAN . . . Etiquette Club . . .
DECA Club . . . Pep Club . . . S & G

SMITH, WILLA MAE . . . Jr Red Cross Sec . . .
Seventeen Club . . . S & G

STEVENS, JOHN GALEN . . . NHS . . . Science
Talent Search . . . Magna Cum Laude . . . Math and
Science Contests . . . Student Council . . . Golf Team
. . . National Merit Semifinalist . . . IU Summer High
School Science Institute

STEVENS, LINDA GAYLE . . . Seventeen Club . . .
Cum Laude . . . S & G . . . Jr Prom Com Co-Chrm
. . . Pep Club . . . Modeling Club . . . Jr Talent Day
Com . . . Commencement Usher

STEWART, LARRY CARL . . . S & G . . . Trans-
portation Club.

STINSON, SANDRA DARLENE . . . Majorette . . .
Student Council Tres . . . Concert Choir . . . Thes-
pians . . . S & G . . . Cum Laude . . . Sr Talent Day
STONE, LANA SUSANNE . . . School Spirit Staff . . .
Commencement Flower Girl . . . S & G . . . Pep Club
. . . Jr Prom Com . . . Cum Laude . . . Music Ap-
preciation Club . . . FTA

STORMS, CHARLES DIRK . . . Quill & Scroll . . .
School Spirit Editorial Staff . . . Football Mgr . . .
Golf Team . . . S & G . . . Cum Laude . . . Pep Club
. . . Football Club





STROUSE, DIANE COBBS . . . Fr Football Court . . . Soph, Jr Basketball Courts . . . Football Maid-of-Honor . . . S & G . . . Jr Class Veep . . . Sr Prom Com . . . Knitting Club Pres . . . NHS
SUHRHEINRICH, JERRY W . . . S & G . . . Honor Thespian . . . Thespian Pres . . . Pep Club . . . Jr, Sr Talent Days . . . Music Appreciation Club . . . Sr Quartet
SUTTON, LINDA CAROLYN . . . S & G . . . Y-Teens . . . Cheerleaders Club . . . Modeling Club . . . Fr Talent Day

THOMAS, MARSHALL EARL . . . S & G . . . Cum Laude . . . Baseball Team . . . Jr Prom Com . . . All Season Sports Club . . . Automobile Club
THURSTON, BARBARA JEAN . . . Etiquette Club . . . Seventeen Club . . . Pep Club
TICHENOR, CHARLOTTE EVELYN . . . School Spirit Ad Staff . . . Commencement Flower Girl . . . Pep Club . . . S & G . . . Jr, Sr Prom Com . . . Music Appreciation Club

TINGLEY, BARBARA JANE . . . Jr Talent Day Co-Chrm . . . Seventeen Club Pres . . . Jr Prom Com . . . Choreographer for Plain and Fancy and Li'l Abner . . . S & G . . . Pep Club . . . Sr Prom Com . . . Sr Talent Day
TOWNSEND, CECIL LAUREL . . . Thespians . . . Scholarship B . . . Magna Cum Laude . . . Concert Choir . . . Concert Band . . . Future Nurses Club . . . Pep Club . . . S & G
TROUT, CAROL ELAINE . . . S & G . . . Seventeen Club . . . Music Appreciation Club . . . Etiquette Club . . . Bookstore Ass't . . . Pep Club

TULLY, STEVEN JORDAN . . . Honor Code Com . . . S & G . . . Esquire Club . . . Jr Red Cross Club . . . Camera Club . . . Gun Club
VanDEEST, WILLIAM HUNTER . . . Physical Science Club Pres . . . School Spirit Editorial Staff . . . Fr, Res Basketball . . . Pep Club . . . Res Track . . . Cum Laude . . . S & G . . . Sr Talent Day
VANN, DONALD GEORGE . . . Fr, Res, Varsity Football . . . Fr, Varsity Baseball . . . Scholarship B . . . Pep Club . . . S & G . . . Cum Laude . . . Football Club . . . Track

VanTUYL, ELAINE . . . Physical Science Club . . . Y-Teens . . . Cum Laude . . . S & G . . . Scholarship B . . . Sr Invitation Com Tres . . . Pep Club
VAUGHAN, JERRYL WAYNE . . . Student Council . . . Math Club Pres . . . Slide Rule Club Pres . . . Fr Basketball . . . Magna Cum Laude . . . All-City Band and Orchestra . . . Scholarship B . . . NHS
VonBEHREN, JOHN N . . . S & G . . . Transportation Club . . . Gun Club . . . Music Appreciation Club . . . Pep Club

WATTS, PATRICIA ANN . . . Soph Party, Sr Prom Com . . . S & G . . . Cum Laude . . . School Spirit, Sr Edition Editorial Staffs . . . Quill & Scroll . . . GAA Sec, Tres . . . NHS . . . Magna Cum Laude
WEBER, GARY EARL . . . S & G . . . Jr Red Cross Tres . . . Esquire Club . . . Gun Club . . . Camera Club
WEBER, LOWELL ROBERT . . . S & G . . . Magna Cum Laude . . . Cum Laude . . . Marching Band . . . Slide Rule Club . . . Physical Science Club . . . All-City Band



WEBER,
 . . . S &
 ketball
WELLS,
 tion Club
 . . . Pep C
WERKIN
 Cum Lau
 Club . .
 ketball

WHITE,
 Etiquette
WICKWA
 . . . Mod
WIESMA
 Pres . . .
 Kiwanis
 . . . Vars
 arship B

WIIST, V
 S & G . .
 . . . Gun
WILHIT
 chestra P
 . . . Stu
 Banda C
 Scholarsh
WILKE,
 dent Cou
 Court . .
 Intramura

WEBER, ROBERT CLIFFORD . . . Varsity Tennis . . . S & G . . . Esquire Club . . . Intramural Basketball
WELLS, ALLEN JAMES . . . S & G . . . Transportation Club . . . Gun Club . . . Intramural Basketball . . . Pep Club
WERKING, RICHARD . . . Cum Laude . . . Magna Cum Laude . . . Scholarship B . . . S & G . . . Science Club . . . Transportation Club . . . Intramural Basketball



WHITE, MARGIE ELLEN . . . Seventeen Club . . . Etiquette Club . . . S & G
WICKWARE, LOTTIE LEORA . . . Etiquette Club . . . Modeling Club . . . Seventeen Club . . . S & G
WIESMAN, HAROLD JAMES . . . Student Council Pres . . . NHS Pres . . . Jr Class Pres . . . Football Kiwanis Award Winner . . . Football Co-Captain . . . Varsity Basketball . . . Varsity Track . . . Scholarship B



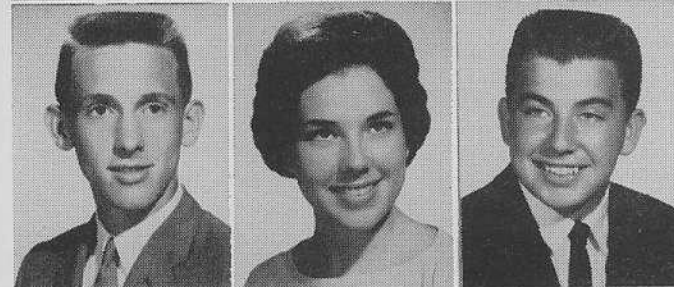
WIIST, WILLIAM ELLIOT . . . Cum Laude . . . S & G . . . Scholarship B . . . All Season Sports Club . . . Gun Club . . . Coin Club . . . Pep Club
WILHITE, JACQUELINE SUE . . . Concert Orchestra Pres . . . Sr Prom Queen . . . Concert Choir . . . Student Council . . . Operettas . . . Copa-cabanda Com Chrm . . . Sr Prom Com Chrm . . . Scholarship B . . . NHS
WILKE, LARRY AYERS . . . Scholarship B . . . Student Council . . . Sr Class Council Pres . . . Jr Prom Court . . . Sr Prom Com Co-Chrm . . . S & G . . . Intramural Basketball . . . NHS



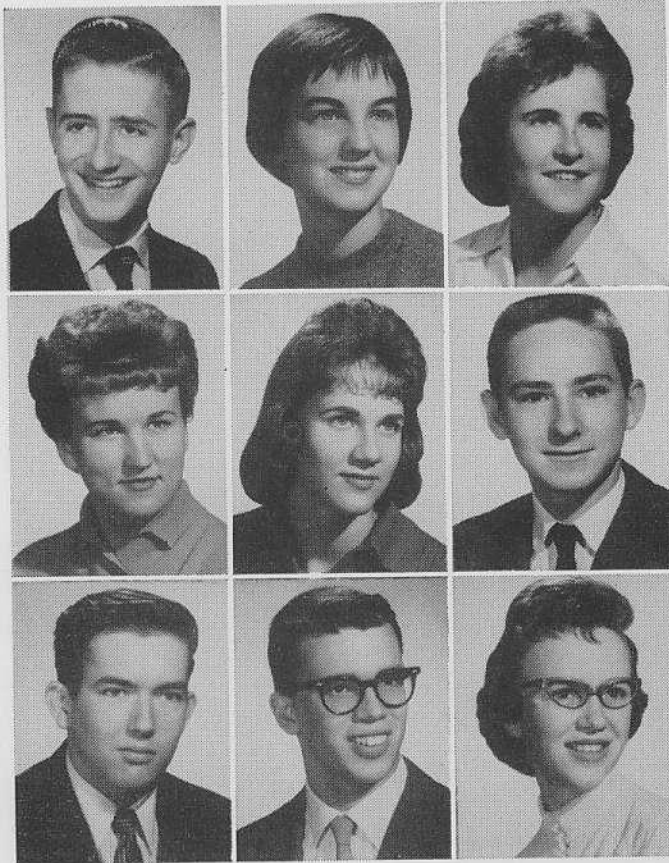
WILLIS, LARRY K . . . Locker Club . . . S & G . . . Movie Operator . . . Hi-Y
WILLIS, PERCILLIA LANE . . . Modeling Club . . . S & G . . . Seventeen Club . . . DE Club
WILLISON, ELIZABETH ANN . . . Class Ring Com Co-Chrm . . . Sr Prom Com . . . Pep Club Com Co-Chrm . . . Plain and Fancy . . . Fr, Jr, Sr Talent Days . . . Scholarship B . . . Jr Talent Day Com



WILSON, CHARLES A . . . Transfer from Bedford . . . Hi-Y . . . Physics Club . . . Science Club
WILSON, GLORIA ANN . . . Etiquette Club . . . Seventeen Club . . . S & G . . . Modeling Club
WILSON, JAMES CLIFFORD . . . Gun Club . . . Coin Club . . . S & G



WILSON, RALPH STANLEY . . . Sr Class Tres . . . Student Council Com Chrm . . . Magna Cum Laude . . . Scholarship B . . . Governor's Youth Conference . . . Jr Prom Com, King . . . Science Club . . . Fr Football . . . NHS
WINCHELL, TERRIE ELLEN . . . Cum Laude . . . Scholarship B . . . Orchestra Librarian . . . A Night With Music . . . S & G . . . Sr Prom Com . . . All-City High School Orchestra . . . Pep Club
WINIGER, WALTER . . . Fr, Res Football . . . School Spirit Ad Staff . . . Sr Edition Ad Staff . . . Pep Club . . . DE Club . . . FBLA Club . . . S & G



ZGORSKI, GLORIA BENTON . . . Fr, Res Cheerleader . . . Seventeen Club Program Chrm . . . Commencement Usher . . . S & G . . . DE Club Sec . . . School Spirit Ad Staff . . . Baccalaureate Usher . . . Cheerleaders Club
MILLS, RICHARD . . . All Season Sports . . . Concert Choir . . . Cum Laude . . . S & G . . . Fr, Res Football . . . Intramural Basketball . . . Esquire Club . . . Music Appreciation Club

WISEMAN, LINO KENT . . . Band . . . Class Ring Com Co-Chrm . . . Scholarship B . . . Cum Laude . . . Magna Cum Laude . . . S & G . . . Student Council . . . Pep Club . . . NHS

WITHERSPOON, GIANNINI RAE . . . Student Council Co-Chrm . . . Quill & Scroll Pres . . . Eastern Tour Captain . . . Jr, Sr Prom Co-Chrm . . . Thespians . . . Pep Club Com Chrm . . . Fr, Jr, Sr Talent Days . . . Commencement Flower Girl . . . Scholarship B . . . NHS

WOLF, DONNA JEAN . . . Cum Laude . . . Quill & Scroll . . . School Spirit Ad Staff . . . Commencement Flower Girl . . . Modeling Club Pres . . . Seventeen Club Sec-Tres . . . Principal's Office . . . NHS

WOODRING, BARBARA JEAN . . . Scholarship B . . . Cum Laude . . . Quill & Scroll . . . Band Lt . . . School Spirit, Sr Edition Editorial Staffs . . . Copaca-Banda Chrm . . . S & G

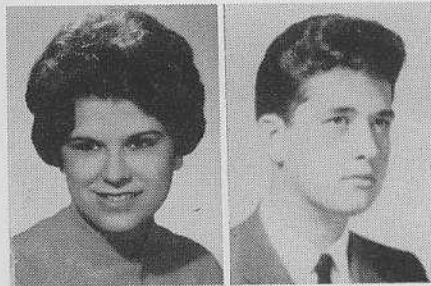
WOODS, CARMEN LORRAINE . . . Cheerleaders Club . . . S & G . . . Quill & Scroll . . . Concert Choir . . . Knitting Club . . . Pep Club Com . . . School Spirit Ad Staff

WOODS, JERRY LEE . . . All Season Sports Club . . . Coin Club . . . Esquire Club . . . S & G

WORK, WILLIAM VAUGHN . . . All Season Sports Club . . . Chess Club . . . S & G

WYTENBACH, ROY FRANKLIN JR . . . S & G . . . Scholarship B . . . Baseball . . . Marching Band . . . Pep Club . . . Thespians . . . Concert Choir . . . Bridge Club Pres

YAGGI, MARGARET ANN . . . Jr Prom Com . . . Future Nurses Club . . . S & G . . . Cum Laude . . . Scholarship B



So Long Gang!

Teachers not pictured were Mrs. Eleanor Gregory, Miss Lois Mueller, Mrs. Mary Ann McGinnis and William Bell. Seniors not pictured were Gilbert Adcock, James Alsop, Carol Ann Atkins, Samuel Baumberger, Larry Bernard, David Biggs, Thomas Bradford, Herman Bradley, Robert Brothers, James Burch, Charles Crowe, Linda Gash, Shirley Henrich, Alice Heugel, James Hiatt, Jim Johnson, Beverley Jones, Bonnie Lampley, Gloria Lang, Donald McCann, Peter Morrison, Larry Newman, Lee Ortmeyer, Junior Riggle, Larry Russel, Joel Schaefer, Steve Smith, Larry Thomas, Donna Walden, Carolyn Wade, Steve Whitsell and Sharon Wingerter.

We
An
Of

We Take
An Aerial View
Of 'Spirit' Advertisers



"When You Think of Gifts . . . Think of Utterback's"

UTTERBACK JEWELERS

DIAMONDS

CHINA . . . CRYSTAL . . . SILVERWARE

Tri-State's Largest Selection of
Nationally Known Watches

"Two Beautiful Stores"

221 Main St.
Downtown

Lawndale
Shoping Center

Congratulations

SENIORS

Smith & Butterfield

305 MAIN STREET

Phone HA 2-3261



Donna Wolf, Carolyn Eberhart, and Gloria Zgorski find out how this Sunbeam electric appliance can help with daughter's good grooming as well as how other electric appliances can help with mother's good cooking.

SOUTHERN INDIANA GAS AND ELECTRIC COMPANY



MOORE

TYPESETTING COMPANY

Machine, Hand and Film Composition

Reproduction Proofs

6 S. E. First Street

Phone HA 3-1214

Typesetters For

THE School Spirit 

Benjamin Bosse High School Evansville, Indiana





Lowell Weber looks over one of the fine products available at

EMIL WEBER COMPANY

Hardware — Paints

Power Mowers — Garden Supplies

Division and Weinbach

GR 6-6781

“We stock the best — for your request”

Congratulations
And
Best Wishes, Seniors

MOLL BROS. HARDWARE

and

MOLL BROS. FIVE AND TEN

ROSS CENTER

When a
GIRL
Marries

and 80% of you
WILL, before
you are 20!



She wants lovely furnishings,
without ruining the
bank account of
her future husband!
YOU'LL FIND WHAT
YOU WANT AT

Finkes's

“37 steps from Main on 7th”

Medical Arts Pharmacy

Headquarters For Your Hospital, Sick Room and
First Aid Supplies

Registered Pharmacist on Duty
At All Times

— FREE DELIVERY SERVICE —

Donald Lutz

Leonard Stratman

3700 Bellemeade

Ph. GR 7-1532

ROYER

PHARMACY

HARRY ROYER, REG. PHARMACIST

Garvin at Virginia Sts.

Phone HA 2-8881

DORWARDS IN LAWNDALE LOCALLY OWNED

Nationally advertised

SHOES

For women and Jr. girls . . .

Gem's

Vitalities

Grace-Walkers

For men and boys . . .

John C. Roberts

and Kingsways

For children . . .

Red Goose

and Yanigans

WALK FORWARD IN

DORWARD SHOES

Lawndals Shopping Center

Evansville, Indiana

HERMANN'S

CORAL DRIVE INN

Luncheon

Sandwiches

Ice Cream

Hermann's Candy

Lincoln Ave. and Greenriver Rd.

Phone GR 6-9711



Eddie Brown knows that Strouse's has the newest styles in shirts.

STROUSE AND BROS.

MAIN AT SECOND

ATTENTION FUTURE NURSES!!



**VISIT US AT
SIDNEY'S UNIFORM CO.
2nd and Main**

ATTENTION!

HIGH SCHOOL GRADUATES

Enroll now for Spring or Summer
or Summer Classes in
Professional Career Training

BRAMWELL'S COLLEGE
is **Approved** and **Accredited**
for teaching commercial subjects.
We teach day and evening
classes. Come in or call us
for information . . . **Phone HA 4-3541**

**BRAMWELL'S BUSINESS
COLLEGE**

318 S.E. First Street

KENDALL R. MARTIN

Excavating Contractor

Best Wishes

Seniors

2310 Vogel Road
GR 7-2631

DRIVE CAREFULLY

KRAUSE

BODY

WORKS

1000 W. Indiana
Phone HA 5-3588

Good Luck SENIORS



Congratulations

Seniors

NORTH STAR FURNITURE COMPANY

"Makers of Occasional Furniture"

1900 Penn St.

Evansville, Indiana



Betsy Willison, Larry Denton, Rick Mills and Joy Hankins are enjoying
"that pause that refreshes"

COCA-COLA BOTTLING WORKS EVANSVILLE, INC



Graduation Gifts

- Cameras
- Photographic Supplies
- Gift Certificates

SCHMITT Photo Service, Inc.

516 W. Franklin St.

H & H Music Service

Congratulations

Seniors



Conn & Selmer Band Instruments
Kimball & Knabe Pianos

Lee Hope

H. D. Hetzel

YES, BUSINESS PAYS WELL

A few months of extensive training after High

School will prepare you for one of the

BETTER JOBS!

LOCKYEAR'S

BUSINESS COLLEGE

Telephone HA 5-7157

ANDREW P. WILL

Charter Coaches

— BUSES FOR CHARTER —

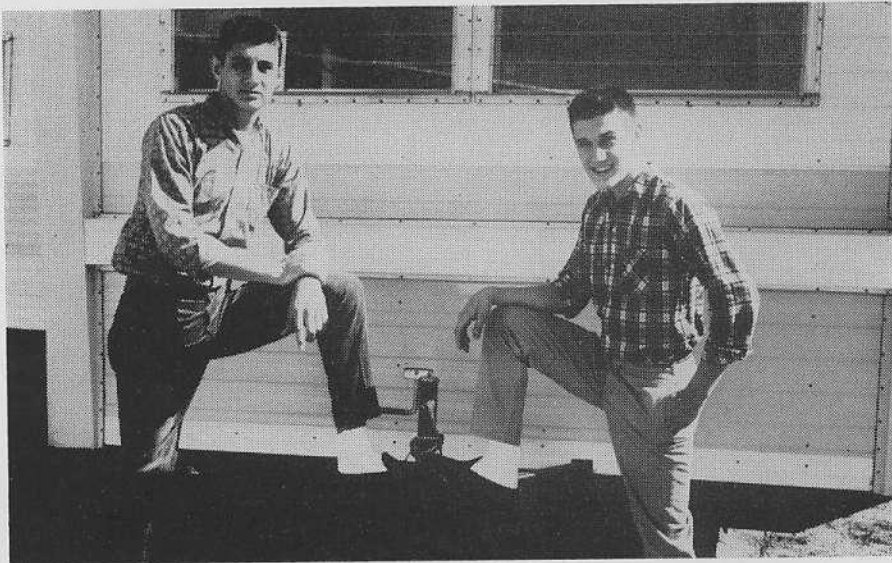
Worry Free . . . Restful . . . Travel at its

Best . . . Air Conditioned . . . Fully Insured

851 OLIVE

HA 2-6245

EVANSVILLE, INDIANA



WELLS MOBILE HOMES SALES

● Liberty ● Skyline ● Richardson

HEADQUARTERS FOR TRAVELER TRAILERS & PICK UP TRUCK COACHES
2321 S. Kentucky HA 5-6233

Tri-State Amusement Co. and Southern Vendors

Congratulations

Seniors

from

Snooks — John — Jr.

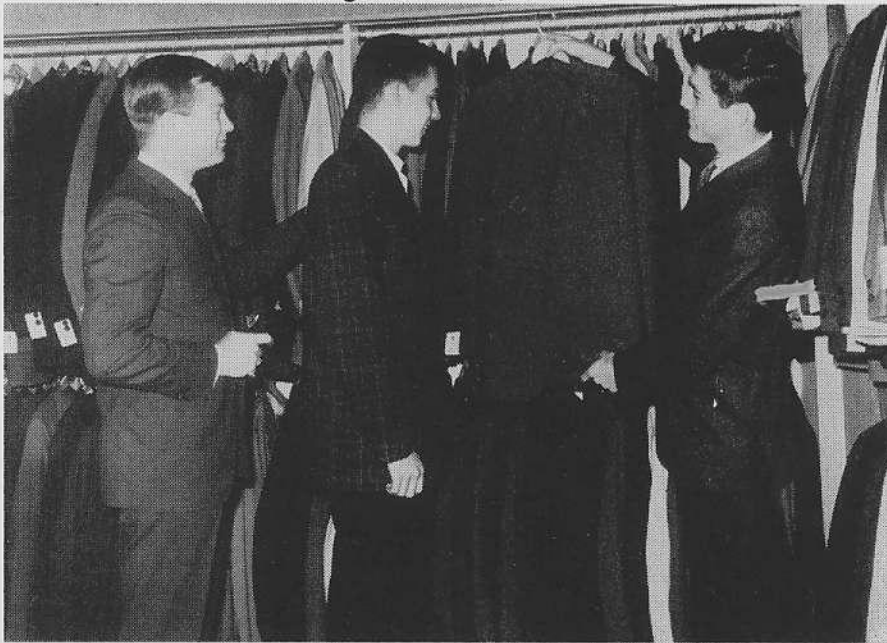
522 Market Street

Phone HA 3-4401

THERE IS NOTHING WORSE
THAN HAVING NOTHING TO DO.



Congratulations, Seniors



Alan McGinnis, Student Salesman, Sells Senior Nick Freeman a Suit with Assistance from Manager Ron Wire.

DUNHILL'S Ross Center
Men's and Boys' Wear

LOMAX & DOERNER

Sporting Goods
TROPHIES
Athletic Equipment

SPORT SHIRTS
SWEATERS
JACKETS } **Sale
Priced**

HA 4-7575

IDEAL

DONUT SHOP

QUALITY & SERVICE

24 HOURS A DAY

WHOLESALE & RETAIL

Winston & Louise Rose

Phone HA 3-6376

414 S. FULTON

*We Render a Complete
Floral Service For all Occasions*

Member of

Florist Telegraph Delivery Association

KLEITZ

FLOWER SHOP

2701 Lincoln Ave.

GR 7-1552



Who Says I Gotta
Have A Hall Pass

Wesselman's

Finer Foods

Where the Tri-State Folks Shop

LINCOLN & WEINBACH

Mgr. Walter Overton

and in

LAWNDALE

Mgr. Aubrey Ryals

For Food at its best —

Try Our Coffee Shop in Lawndale

Congratulations Seniors

Dress right

--- when you look your best

you do your best

SATER'S

Downtown and Lawndale

THE JOAN SHOP

for

HOSIERY, LINGERIE, SPORTSWEAR

FREE GIFT WRAPPING

23 N.W. Fourth Street

Nussmeier Engraving Company

23 Southeast Second Street

ENGRAVED

INVITATIONS AND ANNOUNCEMENTS



Since 1916

Lloyd's Motor Sales

Your Authorized Studebaker

Mercedes - Benz Dealer



A Complete Repair Service

On All Makes of Automobiles

All Work Guaranteed

2218 W. Franklin

TRI-STATE REFRACTORIES

1411 Pennsylvania Street

Evansville, Indiana

Phone HA 5-3466

Fire Brick

High Temperature

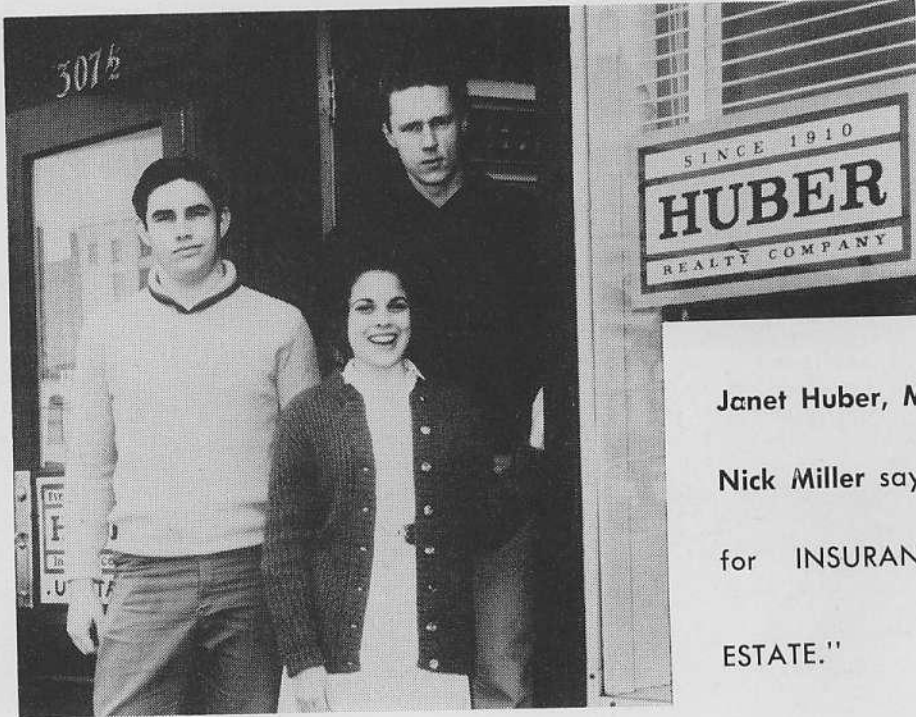
Plastic Fire Brick

Bonding Mortar

Castables

Coatings

KAISER-MEXICO REFRACT



Janet Huber, Mike Cannon and
Nick Miller say, "See our Dads
for INSURANCE and REAL
ESTATE."

Congratulations

Seniors

from

Riecken's

Across From Bosse . . .

1714 SO. KY. AVE. PHONE HA 4-2963

COMSTOCK and VESSELL

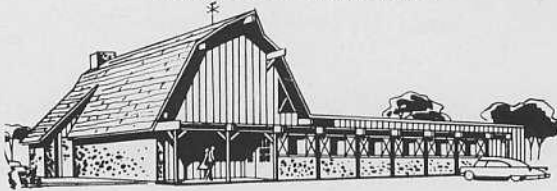
Complete Auto Trim
Custom Made Seat Covers
Convertible Tops
BOAT TOPS

Evansville 14, Indiana

THE NEW

FARMERS DAUGHTER RESTAURANT

2207 South Kentucky Avenue • U. S. 41 South
EVANSVILLE 14, INDIANA



weddings publicity portraits canvas paintings

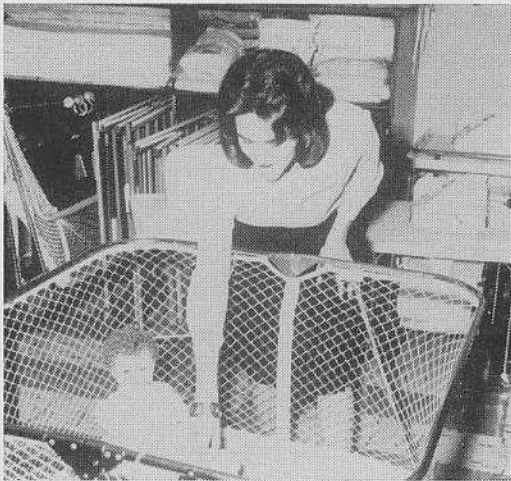
witherspoon

guerin



fern martin guerin
david e. witherspoon

telephone HA 4-4927
2206 west franklin street



Carmen Woods Says
For the Perfect Baby
Gift visit

THE BABY SHOP

404 Main St.

HA 3-5445

CONGRATULATIONS, SENIORS

EVANSVILLE PROFESSIONAL

LAUNDRIES

Atlas Laundry and Cleaning Co.

Pearl Laundry and Dry Cleaners

Best Launderers and Cleaners Inc.

Peerless Laundry and Cleaning Corp.

Krauss Cleaners — Launderers

White Swan Laundry and Cleaners

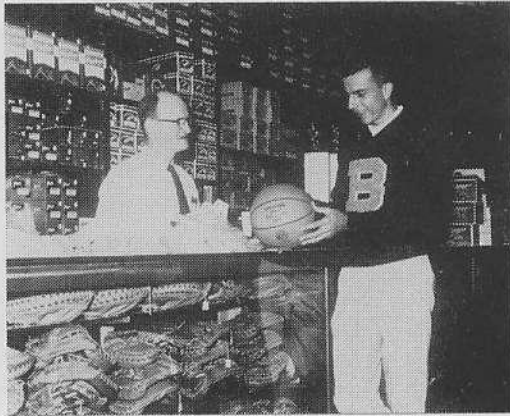
Congratulations, Seniors!

The Best Malts and Shakes

Miller's

WEST SIDE DAIRY QUEEN

West Franklin at 2nd Ave.



Ed Coleman

Your SPORTING GOODS HEADQUARTERS
FOR ATHLETIC EQUIPMENT —
AWARDS and TROPHIES

Beard's

14-16 S. E. Fourth Street

Colonial Lanes



Sixteen Lanes of Luxurious Bowling

Jim Gerhardt, Proprietor — 1100 S. WEINBACH — GR 7-5323

GOOD LUCK, SENIORS



Carol Stock



"We Insure Anything"

KENTUCKY & WALNUT

Congratulations

and

Best Wishes

to the

1961 Graduation Class

Deters

JEWELERS

325 Main

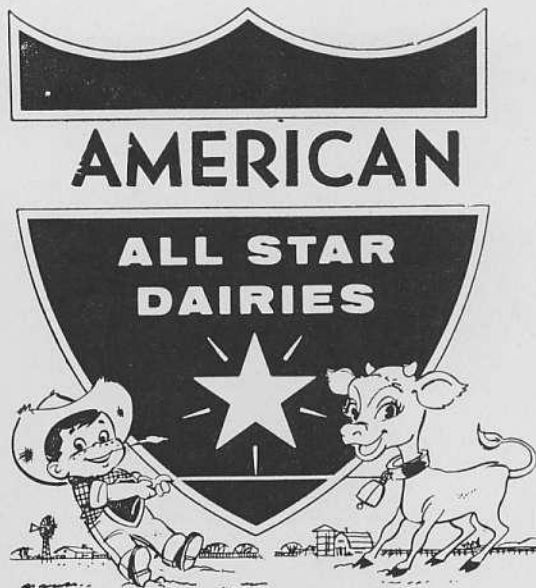
Evansville

AT THE SIGN OF THE ROCKER

Young and old alike
enjoy shopping
for dependable
home furnishings
at . . .



GOOD FURNITURE SINCE 1901



The Country's
FAVORITE!
DAIRY FOODS

For Accommodating Service

PHONE HARRISON 2-7362

MOSER PRINTING CO.

LETTERPRESS AND OFFSET PRINTING

1110 Main Street Evansville 8, Indiana



The Clippinger Twins . . .



Which One Has The
WELLS Dress On?

You're right! Both of Them!



309-311 Main Street

Rent First

... until
you're sure
your child
has an
aptitude
for music



PAY AS LOW AS \$5 A MONTH PLUS CARTAGE

Rent one of the 5 nationally famous makes. Let your child show you he has an interest in, and can learn to play the piano. Your rent-payments will be refunded if you buy the rented piano or any other new piano in our stock.

Purchase Terms, as low as \$3 a week

HARDING and MILLER
MUSIC COMPANY
"The House for Everything Musical"

518-520 Main St.

HA 2-0448

INSURANCE



Reg. U. S. Pat. Off.

- Fire
- Auto
 - Home Owners
 - All Others

Payment Plan if Desired

P. W. BURNS & SON

Phone HA 5-2824 or HA 2-4044

17 N.W. Second

Evansville, Indiana



For the best food — Pizzas — Parbusters — Chicken

For the most fun — Miniature — Driving — Baseball

HAMILTON'S on Highway 41 South

Congratulations, Class of 1961



PARKWAY DRIVE IN RESTAURANT

WE SPEALIZE IN FINE FOOD
FAST SERVICE

Chicken

Steaks

Sea Foods

Pizza



Sandwiches

Sundaes

Sodas

Pizza

Enchanting Atmosphere
Electronic Service
Hwy 66 & Mesker Park Drive

Congratulations

From



RED SPOT

Better Paints
for
Home, School, and Industry

RED SPOT PAINT & VARNISH CO.

110-112 Main St

Phone HA 5-7281

Best of Luck, Seniors!

Stinson's Lettering Shop

Sportswear and Work Uniforms

Can Be Purchased

and

Lettered to Your Specifications

1015 Adams Avenue Phone HA 4-5179

SURF CLUB

The Very Best Swimming Facilities . . .

DIVING POOL
RACING POOL
WADING POOL

Block-long 15 ft. Canopy

Alongside the Pools

Large Clubroom and Snack Bar

Swimming Lessons

Social Contacts

Memberships Make

Excellent Graduation Gifts

Now! Over 3,000,000

Prescriptions

Have Been Filled

by your

WOODS

REXALL

DRUGS



Congratulations

Seniors

Congratulations Seniors!

From



308 Sycamore
119 N.W. 5th

123 N.W. 6th
5th and Sycamore
5th and Vine

2nd and Sycamore
3rd and Locust

"Park With Pride"

HAIRSTYLING

**Bee's
Beauty Salon**



725 Adams Avenue

Judy Palmer, Steve Schnacke.....Co-Editors

Opening Section

Barbara Woodring, Nick Freeman.....Co-Editors
Kip HulvershornAssistant

Sports Section

Marc Hallert, Marv Freson.....Co-Editors

Activities Section

Pam Pride, Phyllis Lowery.....Co-Editors
Pat WattsAssistant

Album Section

Nina WitherspoonEditor
Martha DuncanAssistant

Photographers

Carolyn SchmittPhotographer

Advertising Staff

Nick MillerEditor
Joy HankinsAssistant Editor
Carmen WoodsAssistant Editor
Donna WolfBookkeeper
Lana Stone.....Picture Co-Ordinator